

An aerial photograph of a town, likely Pauls Valley, showing a grid of streets, various commercial and residential buildings, parking lots, and green spaces. The town is surrounded by a hilly, wooded landscape under a clear blue sky.

PAULS VALLEY

CHAMBER OF COMMERCE

COMMUNITY GUIDE & MEMBER DIRECTORY

2025

No one likes to wait.

Especially when **you feel ill.**

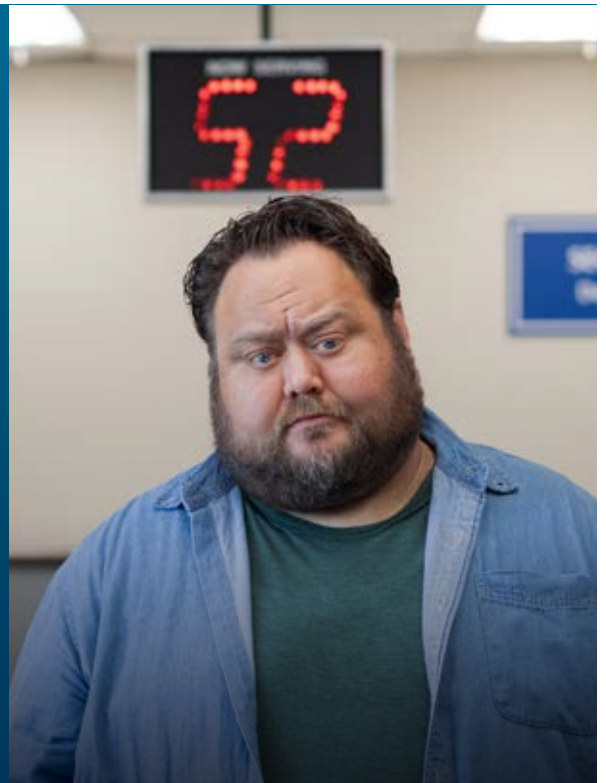
Get the care you need now in **Pauls Valley**, so you can get out of line and on with life.



Find care now.
Scan the code or visit:

[MercyNow.net](https://www.mercynow.net)

Mercy⁺Now



Your home for care.

Mercy Hospital Ada

- 24-hour emergency services
- Imaging: CT, 3D mammography, MRI, PET scan, x-ray and ultrasound
- Therapy services and rehabilitation
- Women's health and birthing suites
- Cardiopulmonary rehabilitation
- Inpatient dialysis
- Wound care

Find doctors and services at
[mercy.net/ada](https://www.mercy.net/ada)

Mercy⁺

DOUBLE YOUR WAYS TO WIN!



I-35 EXIT 70

JETSTREAMCASINO.COM

2001 W. AIRLINE ROAD | PAULS VALLEY



WASHITA
CASINO.

I-35 EXIT 79

WASHITACASINO.COM

EAST ON HIGHWAY 145 | PAOLI

CHECK OUT OUR **DAILY DEALS**[™]

∞CTS[®]

CTS EXPRESS - PAULS VALLEY | SNACKS - BEER - TOBACCO STORE
CTS - PAOLI | FUEL - HOT FOOD TO-GO - SMOKE SHOP - BEER CAVE





The most important link In Walmart's Supply Chain is **YOU!**

Joining Walmart's Supply Chain means investing in your future, making an impact in your community, innovating for a better tomorrow, and creating a thriving career to support life outside of work. We need talented individuals like you — to help us **plan, manage, execute, analyze, and sustain the supply chains of the future**



Apply at: careers.walmart.com

Walmart DC 6042

Grocery Distribution Center # 6042
20634 Indian Meridian Rd., Pauls Valley, OK 73075
405-207-5000



(405) 207-2200

**200 N Indian Meridian Road
Pauls Valley, OK
73075-9102**

ABOUT THE COVER



Dustin Frazee of the Grant & Katie Johnson CPA team took the cover photo, the aerial shot of downtown Pauls Valley. Dustin grew up in Pauls Valley and began flying nitro RC planes when he was a teenager. Today, he flies RC planes and multicopters as a hobbyist mainly for personal photography and pleasure. Other hobbies are rebuilding, collecting, and modifying cars as well as raising pigs.

A PUBLICATION OF

PAULS VALLEY

CHAMBER OF COMMERCE

112 E. PAUL AVENUE

P.O. BOX 638

PAULS VALLEY, OK 73075

(405) 238-6491

www.PaulsValleyChamber.com

info@PaulsValleyChamber.com

VISION

Advancing the commercial, industrial, educational, civic, general business, and cultural climate of Pauls Valley.

MISSION

To enhance economic growth of Pauls Valley and to serve our members by focusing on education, promotion and development of the business community.

To be included in this Guide next year, please contact the Pauls Valley Chamber of Commerce.

NANCY RUNGE, PUBLISHER
STEVE FREEMAN, EDITOR

DESIGNED & PRINTED BY



401 N Third | Durant, OK 74701

580.924.2271

pricesprinting.com

CONTENTS

CHAMBER OF COMMERCE

About the Cover Art	2
About the Chamber	5
Board of Directors	6
History of the Chamber	7

PAULS VALLEY

History of Pauls Valley	8
Living Here	9
Taxes & Employment	11
Education	13
Transportation & Agriculture	14
Arts & Culture	15
Activities	17
Recreation	19
Outdoor Fun	20

COMMUNITY CONTACTS

City & Organizations	21-23
County & Tribal Governments	24
Federal & State Governments	25

MEMBER LIST 26-27

MEMBER DIRECTORY 28-46

COMMUNITY CALENDAR 47

PAULS VALLEY MAP 48-51

INDEX OF ADVERTISERS 52

Thompson's
SOONER HOME FURNISHINGS



Mark, Mickey & Amy
 Family Owned / Doing Business Since 1953

**Furniture • Mattresses • Appliances
 Electronics • Sales & Service**

101 E. Paul - Mon:1-6, Tues-Fri: 9-6, Sat: 9-1 (Lunch:1-2)
 238-3334 • www.SoonerHome.net
 "Pauls Valley's Radio Shack Dealer"

**GRANT & KATIE
 JOHNSON**

CERTIFIED PUBLIC ACCOUNTANTS



(405) 238-2727

Pauls Valley Sulphur/Davis
 Lindsay

ABIDING
 HOME HEALTH

409 N. Green Ave., Ste. C
 Purcell, OK 73080
 405.442.0040

**PHYSICAL
 THERAPY
 CENTRAL, INC**

*Back To Work.
 Back To Play.*
Back To Life.

www.ptcentral.org

34637 Airline Rd
405-238-7000

INSURANCEONE
agency

Kevin Readnour

- HOME
- BUSINESS
- LIFE
- CYCLES
- BOND
- HEALTH
- FARM
- OIL FIELD
- RV's

205 S. Chickasaw • Pauls Valley, Oklahoma

(405) 238-7331

1 First United
 SPEND LIFE WISELY

ANNUAL RED BRICK ROAD

FILM

Festival

OCTOBER 9-12, 2025
 PAULS VALLEY, OK

For More Information
 www.RedBrickRoadFilmFestival.com

#RedBrickRoadFilmFest @RedBrickRoadPF

A WORD FROM THE CHAMBER PRESIDENT



Nancy Runge
Chamber President

Welcome to Pauls Valley! We are a small town, but we are rich with tradition. The Chamber is proud to have been a part of that history for over 100 years. We have advocated for businesses large and small.

2024 was definitely a year of change for the community. We have a new School Superintendent, Dr. Brett Knight, a new City Manager, Joe Livingston, and we have even elected a new State Senator, Jonathan Wingard. At the Chamber we look forward to where our new leaders can take us.

The Chamber ended 2024 on high note. We added four new members at the end of the year, and we look forward to more new members in 2025. The Chamber works hard to support local businesses. We started some new networking events last year including Coffee and Conversation, which we hope to expand this year. We created a Downtown Business Committee in 2023 and it has expanded to host Christmas activities in conjunction with the City. Activities like a Gnome Scavenger Hunt are designed to bring people downtown into our local stores. We helped to provide valuable information to our members by hosting events such as legislative lunches that provide updates from our elected officials and a Meet and Greet with our newly elected State Senator Jonathan Wingard. We also host Fields Pie Day at the Capitol and meet with our officials during the Legislative Session.

I hope you experience the warmth and friendliness that I have come to appreciate in our small town. If you get a chance, please try to attend some of our fun events, like the Okie Noodling Tournament, Brickfest, Boo on the Bricks, the Red Brick Road Film Festival and Christmas in the Valley. You will soon discover what makes Pauls Valley such a special place.

Our Chamber office is located at 112 E. Paul Ave. in downtown Pauls Valley. Please call or stop by. We would be pleased to help you discover the hidden treasures Pauls Valley has to offer. If you are new to the area or just visiting, we are glad to have you in Pauls Valley. I hope this community guide helps you navigate our great community.

MEMBER BENEFITS

EXPOSURE

- Submission of new member news for publication in *Pauls Valley Democrat* and *Garvin County News Star*
- Member referrals to inquiring general public and other businesses
- Business listing on www.paulsvalleychamber.com
- Facebook postings and promotions periodically throughout year
- Local business brochure rack

NETWORKING

- Annual Chamber Celebration Banquet
- Chamber-sponsored events
- Monthly board meeting held 3rd Tuesday at 12 noon
- Special events committee participation

- Legislative Briefings
- Pie Day at State Capitol

DISCOUNTS

- Advertising discounts with local media

CHAMBER NEWS

- Monthly E-newsletters
- Member Briefs

ANNUAL COMMUNITY GUIDE & MEMBER DIRECTORY

- Free listing of your business or organization
- Advertising opportunities

LEADERSHIP OPPORTUNITIES

- Board of Directors and Events, Legislative and Membership Committees

CHAMBER BOARD OF DIRECTORS

CHAMBER INFO

Our volunteer board of directors governs the Chamber, and a professional staff led by the Chamber President runs its day-to-day operations. Ultimately, the effectiveness of the Chamber as an organization is entirely dependent upon the support and involvement of our membership.

EXECUTIVE BOARD

Chair Amy Brown Sooner Home Furnishings	Chair Elect Joe Don Looney EZ Green LLC	Treasurer Katie Johnson Grant & Katie Johnson, CPA	Past Chair Jan Moran AT&T	Appointee Allie Crow Physical Therapy Central	Appointee Travis John TriVan Roofing
---	--	--	--	---	---

VOTING DIRECTORS (EXPIRES JUNE 2025)

Joe Don Looney, EZ Green LLC
 Lu Ann Milligan, Pauls Valley National Bank
 Jan Moran, AT&T
 Allie Crow, Physical Therapy Central
 Tamara Hicks, Mid-America Technology Center
 Krystal McKee, Reavis Rexall Drugstore

VOTING DIRECTORS (EXPIRES JUNE 2026)

Travis John, TriVan Roofing
 Amy Brown, Sooner Home Furnishings
 Todd Thomsen, OG&E
 Becky Ledbetter, Pauls Valley National Bank
 Jamie Davis, Amcor Flexibles North America
 Tawni Huggans, City of Pauls Valley

NANCY RUNGE

President



Sharpe's Department Store



Wash Bar

CONTACT US:

112 E. Paul Ave.
 Mail: P.O. Box 638
 Pauls Valley, OK 73075

Phone: (405) 238-6491
www.PaulsValleyChamber.com
info@PaulsValleyChamber.com



MEMBERSHIP
APPLICATION

HISTORY OF THE CHAMBER OF COMMERCE 1921 - 2025

CHAMBER INFO

In 2021, the Pauls Valley Chamber celebrated its 100th anniversary and received an official commendation from Oklahoma Gov. Kevin Stitt praising the Chamber as having “successfully enhanced the economic growth of the town, becoming one of the leading business resources in Garvin County.”

The origins go back even further than 1921, however. In 1898, a local Business Men’s Club was organized and was active for a time, but had become dormant. In about 1905, when Pauls Valley was still part of Indian Territory (before statehood), two local newspapers, The Sentinel and the Enterprise, both wrote about the need for reviving the club. In his support of the effort, O.S. Wilson, editor of the Sentinel, wrote, “Pauls Valley is in a progressive county where for a town to stay at the head of the procession requires organization on the part of the citizens.”

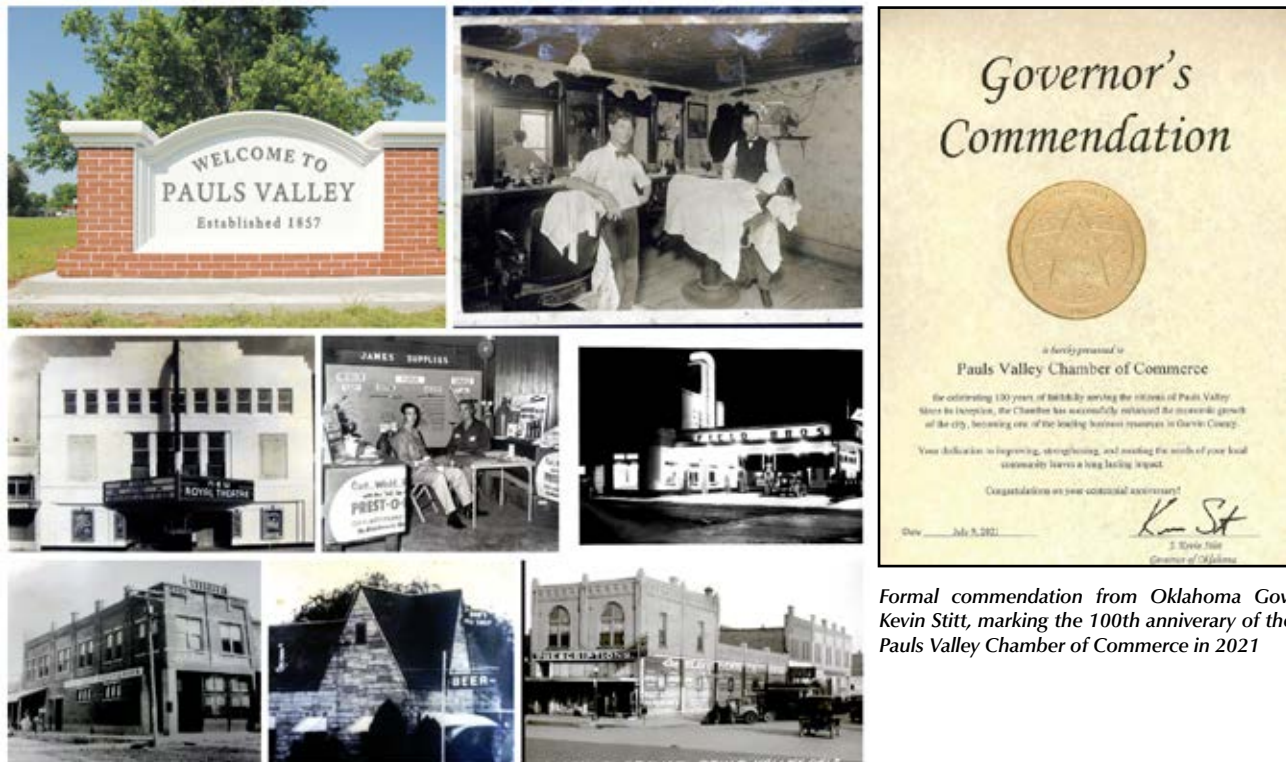
The businessmen started the organization on May 11, 1905. A total of 125 people signed up. This was the forerunner of today’s Chamber of Commerce.

Fast-forward some 16 years. The still young but growing town bolstered its business organization again—perhaps following a trend happening nationally with many cities starting Chambers of Commerce. On Dec. 24, 1921, several business leaders incorporated the Pauls Valley Chamber of Commerce. The organization has been a strong and positive force for the economic wellbeing of the town ever since.

Today, the Chamber operates out of a brick building built for the Pauls Valley Masonic Lodge in 1906. The building is said to be the oldest structure of continuous use in downtown. The Masons donated the building to the Chamber in the late 1970s.

For more Chamber history, visit PaulsValleyChamber.com.

(Adrienne Grimmert of the Pauls Valley Historical Society contributed to this article.)



Formal commendation from Oklahoma Gov. Kevin Stitt, marking the 100th anniversary of the Pauls Valley Chamber of Commerce in 2021

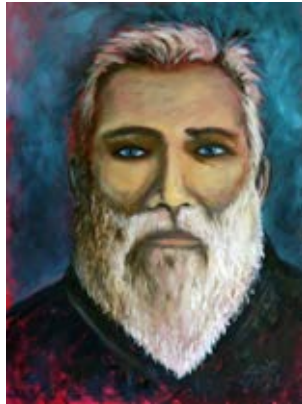
HISTORY OF PAULS VALLEY

1857 - 2025



As a young man, Smith Paul—Pauls Valley’s namesake—left his home near New Bern, NC, seeking a new life for himself. He found a home with a Chickasaw tribe in Mississippi. Paul moved with the Chickasaws when the government ordered them to move to Indian Territory in what is now Oklahoma in 1838. They settled around Boggy Depot, today a ghost town southwest of present-day Atoka, OK.

In 1846, Paul married a Chickasaw woman named Ela Teecha (or Ellen in English). Ellen, a widow, had two children and together they had three more. In 1857, the family moved to the fertile Washita River Valley that straddles the river that bisects the town today. More Indians and inter-married whites began to come to the area being called “Smith Paul’s Valley.” A stagecoach stop, a general store and some log houses stood in an area about one mile south of the current-day Santa Fe Depot.



Portraits of Smith Paul and his wife Elateecha by artist Susie Agee are on display in the Chamber Board Room

The Washita Valley became a major producer and trade center for corn, cotton, beef and pork, as well as a crossroads for travel in the area. Army forts located nearby were major consumers of local products. In 1871, one of the earliest U.S. Post Offices in Indian Territory was established here. In 1887, the Chickasaw Enterprise, one of the earliest newspapers in the region, announced the coming of the Santa Fe Railroad, which contributed to the town’s growth and prosperity.



Discover the rich heritage of Pauls Valley at the Santa Fe Depot Museum and Plaza, 204 S. Santa Fe St. This unique museum is the home of a variety of artifacts from Pauls Valley’s founder, Smith Paul. It features an authentic steam engine and caboose, recognizing the city’s railroad history. For hours and information, call (405) 238-2244.

Brick building construction started in 1893, and a Federal Court House was built in 1895. The first public white school in Indian Territory was established here in 1899. In 1906, Pauls Valley became the county seat of the new Garvin County, named after Samuel Garvin, a local Chickasaw rancher, merchant and banker. Oklahoma statehood came in 1907. The brick streets still used today were added in 1909.

The downtown area is listed on the National Register of Historic Places as a historic central business district.

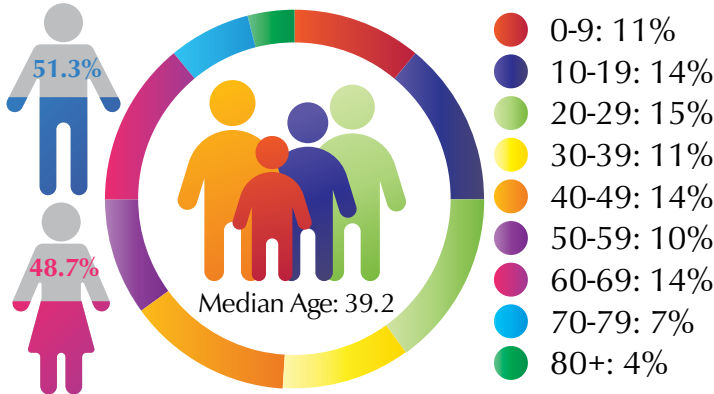
(Adrienne Grimmatt of the Pauls Valley Historical Society contributed to this article.)

LIVING IN PAULS VALLEY

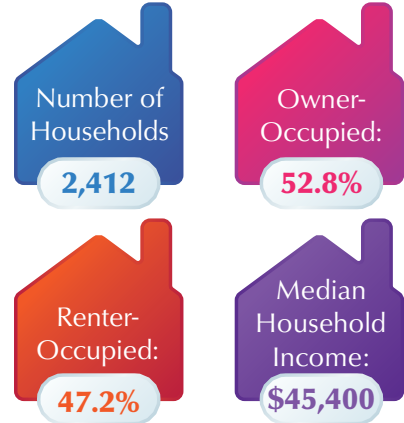
LOCATION

Pauls Valley, founded in 1857, is the county seat of Garvin County, Oklahoma. It is located 55 miles south of Oklahoma City and bounded on the west by Interstate 35 with the downtown section surrounding the intersection of U.S. Highway 77 and State Highway 19. Pauls Valley has a current population of 6,031. Garvin County's current population is 25,865.

POPULATION BY SEX/AGE

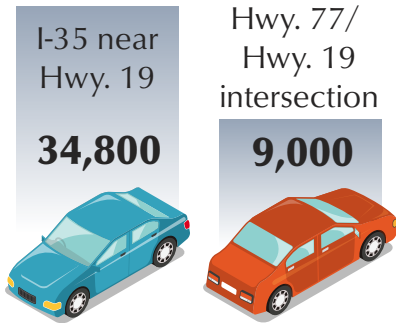


HOUSING

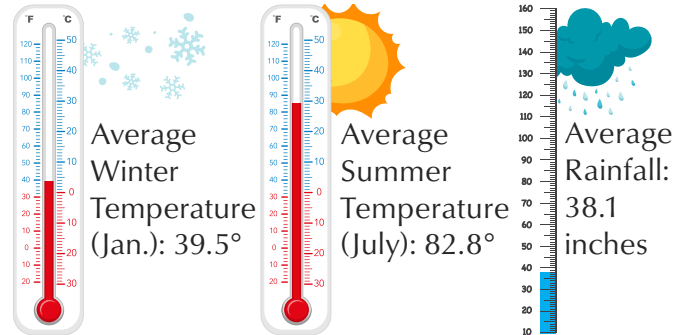


PAULS VALLEY

AVERAGE DAILY TRAFFIC COUNT



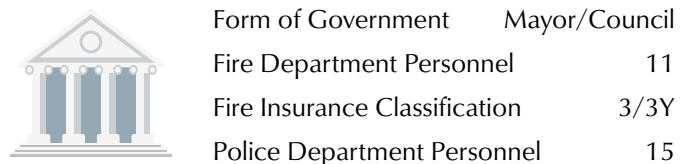
CLIMATE



EDUCATION



MUNICIPAL SERVICES



MURRAY STATE COLLEGE CONCURRENT PROGRAM



MAXIMIZE YOUR HIGH SCHOOL EXPERIENCE.

EARN COLLEGE CREDITS.

CONTACT JEANEA MITCHELL FOR
DETAILS: JRMITCHELL@MNSCOK.EDU



MURRAY STATE IS 1 OF 6 OKLAHOMA
COLLEGE/UNIVERSITIES THAT OFFER
EARLY COLLEGE PROGRAMS.




@'Neal's Jewelers, Inc.

Since 1944

Finest Quality & Lowest Prices

CELEBRATING 80 YEARS

106 W. Paul Ave., Pauls Valley

God Bless Pauls Valley & God Bless the USA

Washita Valley Living Center

*Same services as those big city places but
closer to home with familiar faces.*

Rated 4 star facility by CMS with a 5 star in health inspections.

Services Include:

- Retirement Living • Long Term Care Living • Skilled Nursing Services
- Physical Therapy • Occupational Therapy • Speech Therapy

**105 Washington St.
Pauls Valley, OK** **405-238-5528**




BUSINESS MACHINES
205 WEST PAUL
PAULS VALLEY, OK 73075

800-657-7345 (405) 238-7568

JEFF PAINE

**Check Out
the Chamber
Online**



- Searchable Business Listings with Contact Options
- Calendar of Events
- Latest Chamber News
- Membership Application

www.PaulsValleyChamber.com



Two locations in Pauls Valley to serve you:

**Interstate 35
2505 W. Grant
405-207-9620**

**Downtown at
201 N. Pine
405-238-3301**

2-4pm Daily - Happy Hour

Order Ahead with the Sonic app

PAULS VALLEY TAXES & EMPLOYMENT

OCCUPATIONS IN PAULS VALLEY

MAJOR INDUSTRY SECTORS



PAULS VALLEY

MAJOR EMPLOYERS

Walmart Distribution Center	767
Seth Wadley Auto Group	275
Pauls Valley Public Schools	212
Covercraft	185
Walmart Supercenter	185
Amcor Flexibles North America	180
Garvin County Community Living Center	150
City of Pauls Valley	149
Garvin County	142
Sonic Drive-Ins	88
360 Broadband	88
Burford Group	65
Pauls Valley National Bank	57
Jet Stream Casino	40
Edward's Canvas Inc.	36
LA Jacobson, Inc.	32
Field's Pies	28
Ace Hardware	25
First United Bank	19

JOBLESS RATE

5.9% (November 2022)

SALES TAX

State Tax Rate	4.50%
City Tax Rate	4.50%
County Tax Rate	0.75%

INCOME TAX

Personal Income Tax (state)	4.75% (max)
Corporate Income Tax (state)	4.00% (max)

MOTEL TAX

Hotel/Motel Tax Ordinance of 2001	5.00%
-----------------------------------	-------

GARVIN COUNTY

PERSONAL & REAL PROPERTY TAX (PER 1,000 ASSESSED VALUE)

Pauls Valley School District Mill Levy Rate	\$67.95
Garvin County Mill Levy Rate	\$16.95
Career Tech Levy Rate	\$11.25
Pauls Valley Ambulance	\$3.06
Total Mill Levy for PV School District	\$99.21
Real Property Assessment Rate	11%

ABOUT OUR SCHOOL



Whitebead School District fosters a safe and supportive environment where students are empowered to excel academically, socially, and emotionally through high expectations, community collaboration, and opportunities for growth.

YOUR KIDS DESERVE THE BEST EDUCATION

Whitebead School District is dedicated to providing a well-rounded education that meets the diverse needs of all students. We focus on developing critical thinking, creativity, and lifelong learning skills to prepare students for future success. By offering personalized support and innovative teaching, we ensure every child has the opportunity to thrive.

WHITEBEAD SCHOOL

CONTACT US

-  www.whitebead.net
-  405-238-3021



Discover Your Competitive Advantage

Mid-America Technology Center provides high school and adult learners a competitive edge with high-quality and affordable hands-on education and training to community members, from individuals to businesses, enhancing career and technical skills and spurring economic growth in our communities and companies.

Adult Short-Term Classes



- OSHA Compliance Training
- Forklift Training
- Overhead Crane
- Rigging & Signal Person
- HAZWOPER
- SafeLand USA
- Excavations (trenching & shoring)
- Basic Orientation Plus & Refresher
- Quantitative Respirator Fit Testing

Business Training

- Agriculture Business Management
- Leadership Training
- Small Business Management
QuickBooks, Office, Bookkeeping
- Short-term Professional Development & Personal Enrichment

Full-Time Classes



- Adult & High School Students
- 3 Hour Blocks AM or PM
- Free Tuition to In-District Students 21 & Under (in most full-time programs)
- 30+ Lucrative Career Classes Offered
- Transportation Provided from Local High Schools



Mid-America Main Line
572-215-2060

Business & Industry Services
572-215-2179



BIS: cwilloughby@matech.edu

Full-Time: aschneringer@matech.edu
mgustafson@matech.edu

27438 St. Hwy. 59, Wayne, OK 73095 | P.O. Box H, Wayne, OK 73095 | www.matech.edu

EDUCATION



PAULS VALLEY SCHOOL DISTRICT

ADMINISTRATION

Superintendent Dr. Brett Knight (405) 238-6453

SCHOOLS

Pauls Valley Elementary School Kristi Herd, Principal
1650 W. Grant Ave. Students: 459
(405) 238-2312 Staff: 65

Pauls Valley Intermediate School Angela Green, Principal
301 West Burt Students: 291
(405) 238-7336 Staff: 36

Pauls Valley Junior High School Martha Graham, Principal
109 W. Guy Ave. Students: 344
(405) 238-1239 Staff: 35

Pauls Valley High School Kirk Moore, Principal
601 North St. Students: 334
(405) 238-6497 Staff: 38

BOARD OF EDUCATION

Jesse Alvarado, President Aloysius Jackson
Richelle Humphrey, Vice President Katie Johnson
Joe Don Looney

MORE INFORMATION

PaulsValleySchools.com



HIGHER EDUCATION OPPORTUNITIES

Mid-America Technology Center	17 mi
University of Oklahoma	Norman, 35 mi
East Central University	Ada, 35 mi
Mid-American Christian University	OKC, 54 mi
OKC Community College	OKC, 57 mi
Oklahoma Baptist University	Shawnee, 57 mi
Oklahoma City University	OKC, 60 mi
Rose State College	Midwest City, 62 mi
Oklahoma State University	OKC, 63 mi Stillwater, 112 mi
University of Central Oklahoma	Edmond, 72 mi
Cameron University	Lawton, 80 mi
Murray State College	Tishomingo, 84 mi
Southeastern OK State University	Durant, 97 mi



WHITEBEAD PUBLIC SCHOOL

ADMINISTRATION

Superintendent & Principal Jason Midkiff
(405) 238-3021, Ext. 1001

BOARD OF EDUCATION

Sandy Arroyo, President Belinda Hunt
Alex Young

DESCRIPTION

Whitebead is a pre-kindergarten through 8th grade school. It is an "A" rated school by the State of Oklahoma and is recognized as a Blue Ribbon School.

STUDENTS

133

TEACHERS

28

MORE INFORMATION

Whitebead.net



MID-AMERICA TECHNOLOGY CENTER

Mid-America Technology Center (MATC) is a public career and technology education center in Wayne, OK, that serves Garvin and seven other counties. The district was formed in 1968, and its first classes started in 1971. As part of the Oklahoma Department of Career and Technology Education system, MATC offers 30+ career programs and has an average enrollment of 1,100 full-time high school and adult students. Programs give students a foundation in careers such as automotive maintenance & repair, business office, broadband technician, carpentry, cosmetology, cyber security, EMT, graphic design, health care, HVAC repair & installation, manufacturing, plumbing, pre-engineering, welding, and many more. MATC also works closely to provide advanced learning for area schools. MATC's Short-Term Adult Training & Development has 5 coordinators, and 3 full-time trainers available to provide customized training. Our customized programs historically serve 12,000 - 15,000 professionals and adults per year. Additionally, our Leadership Mid-America program provides leadership training with a new class starting each September.

MORE INFORMATION

(572) 215-2060
or at matech.edu

TRANSPORTATION

DELTA PUBLIC TRANSIT

Delta provides public transportation services to Garvin County residents. This includes door-to-door transportation for doctor office visits and social, nutritional, entertainment, and other needs. Hours of operation are Monday through Friday, 8 a.m. to 5 p.m. The fee is \$2.50 for each in-town stop, with other charges for trips outside Pauls Valley. Call 866-THAT-BUS (842-8287).

PAULS VALLEY MUNICIPAL AIRPORT (405) 238-7338

420 E1595 Rd.
Pauls Valley, OK 73075

Primary runway - 5,000 feet, concrete runway surface, LED lights, Avgas and Jet A fuels available, courtesy car and pilots lounge, Internet.

Airport Identifier: KPVJ Unicom 122.8 AWOS 118.67
Self Serve Fuel 24/7 Fuel Attendance 8 a.m. – 5 p.m.
Runway 17/35



HEARTLAND FLYER AMTRAK'S OKLAHOMA CITY TO FORT WORTH ROUTE

Santa Fe Depot & Plaza
1 Santa Fe Plaza (Hwy 19 at the BNSF tracks)
Pauls Valley, OK 73075

1-800-USA-RAIL (1-800-872-7245)
www.heartlandflyer.com

9:31 a.m. departure/8:05 p.m. return

AGRICULTURE

Garvin County lies in south central Oklahoma and is comprised of 533,120 acres of land, with 468,880 being fertile agricultural land. The county is 42 miles wide and 24 miles long. It is an extremely diversified agricultural area with a gross value of production of approximately \$152 million. More than \$42 million comes from crop production and \$105 million from livestock production.

Alfalfa and other hay crops rank third in the state with 85,000 acres harvested. Garvin County is known for the great quality alfalfa hay raised in the fertile Washita River bottom that extends for over 65 miles in the county. Much of this hay is exported to other states, particularly Texas. This large quantity of quality alfalfa has also been important to the dairy production in Oklahoma and Texas.

Wheat, corn, and soybeans are some of the other major crops sourced in Garvin County. Almost 18,000 acres of wheat, 5,600 acres of corn, and 5,700 acres of soybeans are harvested each year. Cattle production is another major commodity of Garvin County, with over 72,000 head of cattle and calves; 35,000 of those being beef cows. Rounding out the livestock numbers are 300 head of milk cows, 700 sheep, and 400 hogs.

(This data from the USDA National Agricultural Statistics Service is provided by the Garvin County OSU Extension Service.)



OSU Agriculture Office of Communications and Marketing

ARTS & CULTURE

PAULS VALLEY ARTS COUNCIL

PaulsValleyArtsCouncil.org



Formed in 2004, Pauls Valley Arts Council (PVAC) is dedicated to “Enriching the Community through the Arts,” its stated mission. Upcoming events for 2025 include Fifth Friday Art Walks set for January 31, May 30, August 29 and October 31; art classes every third Thursday of the month; the Garvin County Student Art Show; and quilting classes hosted by Mid-America Technology Center. The Pauls Valley Arts and Cultural Center, 220 W. Paul Ave., was officially opened in 2010 and is used by PVAC for meetings, art walks, art shows, workshops, small theatre productions and other art related projects. PVAC started its popular Fifth Friday Art Walks in 2017. Local galleries and businesses display works by local and out-of-town artists. Artists provide live demonstrations and the downtown streets often have musical performers, face-painting artists, mimes and other amusements. Funding for PVAC activities is provided by the Pauls Valley Tourism Board, grants from the Oklahoma Arts Council, membership dues and donations.

THE VAULT

(405)343-6610

TheVaultPaulsValley.com

The Vault Art Space and Gathering Place is an art gallery and event venue at 111 E. Paul Ave. in historic downtown Pauls Valley. The Vault has been bringing people together through art since 2017. Gallery hours are 11 a.m. to 5 p.m. weekdays. Evening and weekend visits are available by appointment.



PAULS VALLEY



GARVIN COUNTY CHORAL SOCIETY & SINFONIETTA

GarvinCountySings.com

GCCSS brings classical and sacred music to south central Oklahoma by producing performances every spring and fall in Pauls Valley. Past performances are *Messiah*, *Pirates of Penzance*, *Marriage of Figaro*, *Amahl and the Night Visitors*, *Oklahoma!*, and *The Nutcracker* ballet. GCCSS relies on generous gifts from individuals and businesses for its ongoing programming.

WASHITA RIVER FILM SOCIETY

WashitaRiverFilmSociety.org

The Washita River Film Society aims to bring more entertainment to Southern Oklahoma through the art of cinema. Its annual Red Brick Road Film Festival provides a platform for diverse films ranging from Oklahoma-produced films to international favorites.



ROYAL THEATRE

(405) 238-6358

This popular entertainment venue offers current hit movies on two screens five nights a week with added matinee showtimes on weekends. A snack bar serves up movie popcorn, drinks and more. Located at Paul Avenue and Santa Fe Street, the theatre has been in the Brewer family for 100 years and has stayed ahead of historic trends like the start of the “talkies” and sound and video milestones. The main theatre includes a balcony and the second theatre is located in a next-door historic bank building which is said to be the oldest building in the city. Once a year, the theatre is part of the Red Brick Road Film Festival. Local moviegoers say it’s the best “two-hour vacation” around!



discover

unique festivals & culture

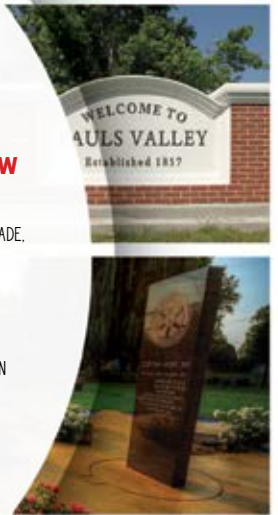
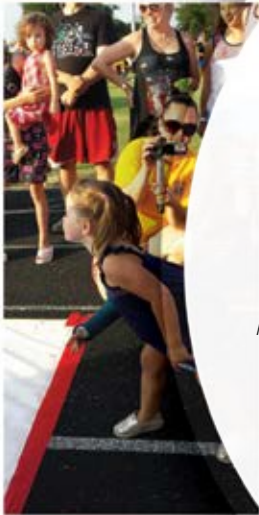
4TH OF JULY SPECTACULAR
LARGEST FIREWORKS DISPLAY IN THE REGION

WORLD CHAMPIONSHIP WATERMELON SEED SPITTIN' CONTEST (JULY 4TH)
A TRADITIONS FOR MORE THAN 50 YEARS AND FEATURED IN THE GUINNESS BOOK OF WORLD RECORDS

OKIE NOODLING FESTIVAL (JUNE)
WORLD'S LARGEST HAND-FISHING TOURNAMENT

BRICKFEST & PVPD CAR SHOW (SEPT)
VARIETY OF CAR CLASSICS, FOOD AND SHOPPING VENDORS PLUS INFLATABLES, A MARCHING BAND PARADE, AND VINTAGE IN THE VALLEY BICYCLE STUNT SHOW

PAULS VALLEY 5TH FRIDAY ART WALK EXPERIENCE
FUN FOR THE ENTIRE FAMILY WITH A WIDE SELECTION OF ARTISTIC STYLES, LIVE ENTERTAINMENT, LIVE DEMONSTRATIONS, FOOD, AND GOOD COMPANY



Please visit individual Facebook accounts for event updates



ACTIVITIES

TOY AND ACTION FIGURE MUSEUM

(405) 238-6300

ToyandActionFigureMuseum.com

The Toy and Action Figure Museum pays homage to those who have turned children's toys into works of art. Located in the heart of historic downtown Pauls Valley, the museum features over 13,000 action figures. The museum is also the home of the Oklahoma Cartoonists Collection, showcasing some of Oklahoma's most noted cartoonists. Located at 111 S. Chickasaw, the museum has varying hours so call before you go.



CITY OF PAULS VALLEY

Pauls Valley is home to unique festivals and special events. These include: OKIE NOODLING TOURNAMENT – On the third weekend in June, the event attracts catfish noodlers from all over the nation, as well as hundreds of fans of the time-honored Oklahoma tradition. 4TH OF JULY CELEBRATION – This patriotic event includes the Pauls Valley Championship Watermelon Seed Spitting Contest and one of the state's largest manually lit fireworks displays set to inspiring music. BRICKFEST – Held the last Saturday in September, the event features street vendors, food trucks, the Pauls Valley Police Department's Car

Show, the Vintage in the Valley Bike Stunt Show and the Marching Band Competition, attracting area high schools. CHRISTMAS – The annual Parade of Lights kicks off the holiday season in the first week of December. It includes the light show at Santa Fe Depot Park, the Fire Department's Chili Supper, and weekly Christmas activities.

PAULS VALLEY

NORA SPARKS WARREN LIBRARY

(405) 238-5188

PaulsValley.OKPLS.org

Nora Sparks Warren Library in Pauls Valley serves all of Garvin County. Children, youth and adults enjoy its collection of books and magazines, both print and digital; its classes and programs; and its various other services. Located at 210 N. Willow St., the library hours are 9 a.m. to 6 p.m. Monday through Thursday, 9 a.m. to 5 p.m. Friday and 9 a.m. to noon Saturday. For children, the library offers story times, summer reading programs, after school snack time and exercise classes. For adults, the library offers free Tai Chi, Yoga and SAIL classes, as well as occasional classes in healthy living, gardening, cooking and more. Visitors can tap into the facility's Wi-Fi internet connection for free. A book lecture series sponsored by Oklahoma Humanities happens twice a year.

To meet patrons' technology needs, the library has fax and scan services, notary public, eight public computers for use and four ABC Mouse learning computers for children. A meeting room is available to book for meetings. The library is also a Passport Acceptance Facility for the U.S. Department of State. Used books are available to purchase thanks to The Friends of the Library group and the library also manages the outside StoryWalk® program in Wacker Park which introduces kids to popular books as they roam the park.



Donald W. Reynolds Recreation Center



1005 N. Willow
405-238-1307

Open:

Mon-Fri 5:30 a.m. - 10 p.m.

Sat 7 a.m. - 10 p.m.

Sun 10 a.m. - 6 p.m.

Fitness Center • Indoor

Walking Track • Gym

Room Rentals • Youth Sports

PVyouthsports.com

Pauls Valley Water Park

Open From Memorial Day
thru Labor Day



Individual & Family Memberships Available
For more information on memberships visit

www.dwrrecpv.com

facebook.com/Donald-W-Reynolds-Recreation-Center



RECREATION

DONALD W. REYNOLDS RECREATION CENTER

(405) 238-1307

dwrrcpv.com

The Reynolds Recreation Center, located in Wacker Park, is a 36,540-square-foot facility offering a variety of amenities for all ages and interests. These include:

- Gymnasium
- Indoor running/walking track
- Weight/cardiovascular area, including free weights, selectorized machines and cardiovascular equipment for youth fitness, sport specific training and rehab/exercise
- Multi-purpose room for multiple program functions and community rentals
- Aerobic/dance area
- Babysitting area, indoor playground and birthday party room

The Pauls Valley Waterpark is a 5,600-square-foot multi-use pool that includes a diving board, lap lanes, a lazy river, flume slides and south central Oklahoma's only giant bowl slide. Families enjoy the zero-entry children's area with its water slides that are just their size, too.

The family aquatic facility is opened from Memorial Day to Labor Day.

An additional option for water fun is the Bosa Indoor Swimming Pool, located across the street from the Bosa Community Center at 207 Bosa Ave. The 25-meter pool is open year around for water fitness classes, arthritis aquatic programs, lap swimming, open family swim, lifeguard training, swimming lessons and private party rentals.



PAULS VALLEY



PAULS VALLEY MUNICIPAL GOLF COURSE

(405) 238-7462

With Bermuda greens and fairways, the 9-hole Pauls Valley Municipal Golf Course provides an enjoyable golfing experience. Located a half mile east of I-35 and Exit 70 South, the golf course has a pro shop, snack bar, driving range and practice area.

OUTDOOR FUN



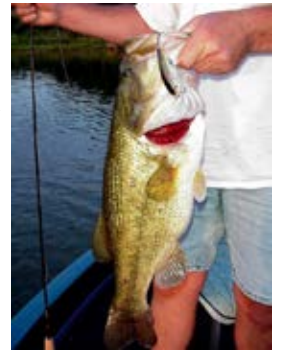
WACKER PARK PAULS VALLEY PARKS & RECREATION (405) 238-1307

Wacker Park is a popular playground and recreational site for the young and young at heart alike. It includes playgrounds, tennis courts, baseball and football stadiums, a band shell, an off-leash dog park, rodeo grounds, county fair facilities, a Senior Citizen Center, a recreation center, a rose garden and a water park. Numerous festivals and events are held in the park each year.

PAULS VALLEY

PAULS VALLEY CITY LAKE (405) 207-6630 LAKE R.C. LONGMIRE (405) 207-6630/(405) 238-5531

Constructed in 1954 primarily as a water supply lake, City Lake is located three miles northeast of Pauls Valley. It offers 750 acres of prime fishing water where various species of catfish, crappie, black bass and saugeye can be caught. Camping facilities range from full hook ups to primitive camping. Longmire Lake is located 11 miles east on State Highway 19 and then 3 miles south on N3340 Road. Although constructed primarily for water supply, the recreational opportunities of this lake include fishing, boating, camping, hiking, birdwatching, hunting and swimming. The Oklahoma Wildlife Department designated Longmire as a trophy bass lake. It has also become a favorite wintering habitat for bald eagles.



LAKEVIEW LAVENDER FARM (405) 238-0042 [facebook.com/lakeviewlavenderfarm](https://www.facebook.com/lakeviewlavenderfarm)

Take a walk through the 800 plants (in season) on this 1-acre farm and get a whiff of the floral scent that is captured in the site's gift shop. There, you'll find homemade soap, lotion, candles, lip balm, cakes, cookies and dried arrangements. It's best to call before you go to the farm at 21536 NCR 3200.

WILD HORSE & BURRO CENTER

Catch a glimpse of the way wild horses used to roam the open landscapes of America by visiting the 400-acre Wild Horse and Burro Adoption Center, located on the west side of I-35 at Exit 74 (Kimberlin Road). See the drive-through interpretative exhibits. Call (800) 237-2642.



COMMUNITY CONTACTS

EMERGENCY

CITY	POLICE	FIRE	AMBULANCE
Pauls Valley, Elmore City, Lindsay, Maysville, Paoli	911	911	911
Stratford (9 a.m. - 5 p.m.)	(405) 238-9900	(405) 238-9900	(405) 238-9900
Wynnewood (9 a.m. - 5 p.m.)	(405) 665-2121	(405) 665-2121	(405) 238-9900
Stratford, Wynnewood (After 5)	911	911	911

NON-EMERGENCY

CITY	POLICE	FIRE	AMBULANCE
Garvin County	911	(405) 238-9900	(405) 238-9900
Elmore City	(580) 788-2340	(580) 788-2340	(580) 788-2340
Lindsay	(405) 756-4481	(405) 756-3111	(405) 756-3111
Maysville	(405) 867-4447	(405) 867-4447	(405) 867-4447
Paoli	(405) 484-7599	(405) 484-7844	(405) 238-5531
Pauls Valley	(405) 238-5531	(405) 238-5171	(405) 238-5531
Stratford	(580) 759-2371	(580) 759-2371	(580) 759-2371
Wynnewood	(405) 665-4360	(405) 665-4772	(405) 238-9900

HOTLINES

Child or Adult Abuse Hotline	(800) 522-3511	Poison Control Center	(800) 222-1222
Missing & Exploited Children	(800) 843-5678	Suicide Prevention Hotline	(800) 784-2433
National Hopeline Network	(800) 442-4673	Teen Hotline	(800) 522-8336
OK Mental Health & Substance Abuse	(800) 522-9054	Youth Crisis & Runaway Hotline	(800) 448-4663
Parenting Help Line	(888)603-9100		

UTILITIES

Electric - Oklahoma Gas & Electric	(800) 272-9741	Rural Electric Cooperative	(405) 756-3104
Gas - Oklahoma Natural Gas	(800) 664-5463	Gas - Centerpoint Energy	(866) 275-5265
Pauls Valley Water Department	(405) 238-1300	Rural Water District 1	(405) 238-7762
Rural Water District 4	(405) 238-7173		

TRASH SERVICES

Garvin County Community Living Center (Recycling)	(405) 207-1155	Rural Sanitation Services	(580) 788-2747
GFL Environmental	(405) 495-0800	Solid Waste Removal Co.	(405) 238-2059
Pauls Valley Trash Service	(405) 238-3300		

CITY OF PAULS VALLEY

<p>100 W. Paul Avenue P.O. Box 778 Pauls Valley, OK 73075</p> <p>Jocelyn Rushing, Mayor Joe Livingston, City Manager</p> <p>(405) 238-3308 www.PaulsValley.com</p>	Airport	(405) 238-7338
	Animal Control	(405) 238-1303
	Bosa Aquatic Center	(405) 238-1238
	Cemetery	(405) 238-6728
	Code Enforcement	(405) 238-3308, Ext. 161
	Donald W. Reynolds Recreation Center	(405) 238-1307
	Golf Course	(405) 238-7462
	Longmire Lake	Lake Ranger (405) 207-6630
		Non-Emergency PD (405) 238-5531
	Nora Sparks Warren Library	(405) 238-5188
City Hall	Ext. 151	Parks & Recreation (405) 238-1307
City Clerk	Ext. 153	Pauls Valley City Lake (405) 207-6630
Police Chief Don May		Senior Nutrition Center (405) 238-5892
Fire Chief Scott Woods		Trash Service (405) 238-3300
		Water Department (405) 238-1300 Ext. 148

OTHER IMPORTANT NUMBERS

211 Oklahoma (Food, Rent, and Community Services)	211	Office of Juvenile Affairs	(405) 238-5547
CASA Outreach McClain/Garvin County	(405) 360-5295	Pauls Valley Post Office	(405) 238-3268
Department of Human Services	(405) 238-6461	Pauls Valley Tag Office	(405) 238-5534
McClain/Garvin Youth & Family Center	(405) 527-2424	Social Security Administration	(866) 331-2207
Mental Health Services	(405) 238-7311	Veterans Affairs Regional Office	(918) 397-2560

COMMUNITY ORGANIZATIONS

Abbott House Child Advocacy Center	(405) 579-5800
Arbuckle Area Council of American Boy Scouts	(580) 223-0831
Boy Scout Troop #73	(405) 207-8841
Cub Scout Pack #73	(405) 238-0153
Chickasaw Senior Center	(405) 207-9034
Delta Community Action Foundation	(405) 238-3838
Delta Public Transit	(405) 238-9444
Frontline Family Solutions	(405) 527-2424

Garvin County 4-H	(405) 238-6681
Garvin County Choral Society & Sonfonietta	(405) 459-7799
Garvin County Community Living Center	(405) 238-3773
Girl Scouts of Pauls Valley	(580) 465-7675
Hope for Tomorrow for Garvin County	(405) 830-1799
Lions Club of Pauls Valley	(405) 637-0337
Love PV	lovePVevent@gmail.com
Masonic Lodge of Pauls Valley	(405) 238-5113
Ministerial Alliance	(405) 238-6667
P.A.S.S. Coalition for a Drug Free Community	(580) 490-9197
Pauls Valley Alumni Association	(405) 238-0065
Pauls Valley Animal Welfare Society (PAWS)	(405) 238-1303
Pauls Valley Arts Council	(714) 272-9338
Pauls Valley Chamber of Commerce	(405) 238-6491
Pauls Valley Community Foundation	(405) 238-6444
Pauls Valley Head Start	(405) 238-3838
Pauls Valley Historical Society	(405) 238-2244
Pauls Valley Tennis & Racquet Association	(405) 623-6185
Paws Valley Dog Park	pawsvalley@gmail.com
Rotary Club of Pauls Valley	(405) 207-1548
Samaritans of Pauls Valley	(405) 207-9077
Senior Citizens Center	(405) 238-5892
South Central CASA of Oklahoma	(405) 360-5295
Southern Workforce Board	(405) 238-2988
Washita River Film Society	WRFilmSociety@gmail.com
Youth Sports League	(405) 238-1307

GOVERNMENT

GARVIN COUNTY

Commissioner District 1 Randy Chandler	(405) 867-4409
Commissioner District 2 Tom Pyle	(580) 788-2774
Commissioner District 3 Mike Gollihare	(580) 759-2362
County Assessor Tammy Murrah	(405) 238-2409
County Clerk Lori Fulks	(405) 238-2772
County Commissioners (Main Office)	(405) 238-2685
County Court Clerk Laura Lee	(405) 238-5596
County Election Board Holly Levis	(405) 238-3303
County OSU Extension Center	(405) 238-6681
County Sheriff Jim Mullett	(405) 238-7591
County Treasurer	(405) 238-7301
County 911	(405) 238-9900
Court Reporter	(405) 238-1143
Department of Human Services	(405) 238-6461
District Attorney Greg Mashburn	(405) 573-1364
District Judge Leah Edwards	(405) 238-3486
Associate District Judge Laura McClain	(405) 238-2542
Special District Judge Trisha Misak	(405) 238-6561
Emergency Management	(405) 238-1148
Health Department	(405) 238-7346
Rural Water	(405) 238-7762

COMMUNITY CONTACTS

CHICKASAW NATION

GOVERNMENT & ADMINISTRATION

Bureau of Indian Affairs Chickasaw Agency	(580) 436-0784
Carl Albert Indian Health Facility	(580) 436-3980
Chickasaw Lighthouse Police	(580) 436-7213
Chickasaw Nation Headquarters	(580) 436-2603
Chickasaw Nation Senior Center	(405) 207-9034
Chickasaw Tribal Legislature	(580) 436-1460
District Court	(580) 235-0279
Drug Court Support Services	(580) 235-7652
Supreme Court	(580) 235-0281

GOVERNMENT FEDERAL & STATE ELECTED OFFICIALS

GOVERNOR J. KEVIN STITT

Oklahoma.gov/Governor.html

(405) 521-2342

2300 N. Lincoln Blvd., Suite 212
Oklahoma City, OK 73105

U.S. CONGRESSMAN TOM COLE (R)

Field Representative: Amber Savage
E-mail: amber.savage@mail.house.gov

(202) 225-6165

Local Number: (405) 329-6500
3219 Rock Creek Rd., Ste. 125
Norman, OK 73072
2207 Rayburn House Office Building
Washington, DC 20515

U.S. SENATOR MARKWAYNE MULLIN (R)

Field Representative: Thomas Cohrs
Email: thomas_cohrs@mullin.senate.gov

(202) 224-4721

Local Number: (405) 208-8841
3817 NW Expressway #780
Oklahoma City, OK 73112
330 Hart Senate Office Building
Washington, D.C., 20510

U.S. SENATOR JAMES LANKFORD (R)

Field Representative: Steve Carson
E-mail: steve_carson@lankford.senate.gov

(202) 225-2132

Local Number: (405) 231-4941
1015 N. Broadway, Suite 310
Oklahoma City, OK 73102
316 Hart Senate Building
Washington, DC 20510

STATE SENATOR JONATHAN WINGARD (R)

District 13
Assistant: Donna Ambler
E-mail: jonathan.wingard@oksenate.gov

(405) 521-5541

2300 N. Lincoln Blvd, Rm. 411
Oklahoma City, OK 73105

STATE SENATOR KENDAL SACCHIERI (R)

District 43
Assistant: Kaye Beach
E-mail: kendal.sacchieri@oksenate.gov

(405) 521-5522

STATE REPRESENTATIVE CYNTHIA ROE (R)

District 42
Legislative Assistant: Debbie Day
E-mail: cynthia.roe@okhouse.gov

(405) 557-7365

2300 N. Lincoln Blvd, Rm. 242
Oklahoma City, OK 73105

STATE REPRESENTATIVE TAMMY TOWNLEY (R)

District 48
Legislative Assistant: Audra Brice
E-mail: tammy.townley@okhouse.gov

(405) 557-7326

2300 N. Lincoln Blvd, Rm. 303
Oklahoma City, OK 73105

MEMBER LIST

MEMBER NAME	PAGES	MEMBER NAME	PAGES
360 Broadband	11, 37, 46	First United Methodist Church	31
Abbott House Child Advocacy Center	22, 44, Cover	Frontline Family Solutions	22, 44
Abiding Home Health	4, 36	Gamble Realty	41
Ace Hardware & Lumber	11, 35, 43	Garvin Agee Carlton P.C.	29
AirMedCare Network/Air Evac	28, 36	Garvin County Abstract	28
Allee, Brian D.O.	36	Garvin County Choral Society & Sinfonietta	15, 23, 40
Allstate Termite & Pest Control	40	Garvin County Community Living Center	11, 21, 23,
Amcors Flexibles North America	2, 6, 11, 39		29, 44, 46
Apple Ridge Seniors	29, 44	Garvin County Farm Bureau	34, 37
AT&T	6, 37, 45, 46	Garvin County News Star	5, 28, 39
AtLink Services, LLC	37	GFL Environmental	21, 46
Backroad Spirits	38, 43	Grant & Katie Johnson, CPA, PLLC	2, 4, 6, 28, 45
Baja Services	40	Hampton Inn & Suites	37
Bar Nunn Ranch	28	Heritage Therapeutic Services	44
Best Western Plus	37	Hinkle Printing & Office Supply	40, 41, 43
Better Barns	32, 39, 44	Holiday Inn Express & Suites	37
Boom-A-Rang Restaurant	42	Homeland	35
Bosa Community Center	34, 51	Hooves and Paws Animal Hospital	46
Burford Corp.	11, 39	Hope for Tomorrow for Garvin County	23, 44
Chickasaw Country Marketing Assoc.	28	Hunter Super Techs	33, 37, 41
Chickasaw Nation	24, 35	Insurance One	4, 37
Chicken Express	42	Intolubbe Associates	29
City of Pauls Valley	6, 11, 16, 17, 21, 22, 35, 47	Iron Wolf Coffee House	32, 42, Cover
Colley & Company	39	J & R Construction	32
Comfort Inn & Suites	37	James Supplies & Rental	33, 46
Comprehensive Dentistry	36	Jamie Means, DDS	36
Continental Credit	38, Cover	Jarman Realty	41
Cornerstone Caregiving	36	Jason Bridwell State Farm Agency	37
Covercraft Industries, LLC.	11, 39	JC Business Coaching and Consulting LLC	32
Dan Barney, PLLC	29	Jet Stream Casino	1, 11, 29, 31, 32, 43
Delta Community Action Foundation	22, 44	Johnson's Drapery	46
Domino's Restaurant	42	Jones, Dr. Kim	36
Donald W. Reynolds Recreation Center	18, 19, 22,	KBLP-105.1FM Radio	41
	34, 42, 51	KICM 97.7 FM Radio	41
Eastridge Country Estates	41	KIXO KIX106FM Radio	41
Economy Inn Express	37	Kristi Dobbins CPA	28, 45
Edward Jones - Agee	34	L.A. Jacobson, Inc.	11, 32, 39
Edward Jones - Hendrix	34	Lakeview Lavender Farm	28
Edwards Canvas, Inc.	11, 39	Legacy Accounting, CPA PLLC	28, 45
EG ²	40	Legacy Drug	41
El Tapatio Mexican Restaurant	10, 31, 42, Cover	Lighthouse Behavioral Wellness Center	35, 44
Elite Motorsports LLC	39	Lions Club of Pauls Valley	23, 32
EZ Green LLC	6, 38, Cover	Lou's Liquors	38, 43
Field's Pies	11, 30, 39	Love's Country Store #50	32, 43
First Presbyterian Church	31	Love's Travel Stop	33, 43
First United Bank	4, 11, 30		

ABS - AIR

A

(Cont.)

MEMBER LIST

MEMBER NAME	PAGES	MEMBER NAME	PAGES
Mercy Clinic Primary Care & General Surgery	Cover, 36	State Farm Insurance Co.	37
Mid-America Technology Center	6, 12, 13, 15, 33, 46	STEELECO, Inc.	32, 43
MNS Auto & Tire	30	Stufflebean-Coffey Funeral Home	34
Mo-B Car Wash	31	Sun Loan & Tax Service	38, 45
Moore Sonic Group	10, 11, 42	T-Mobile	37, 46
Murray State College	10, 13, 33	Taco Bell	42
Nabors Welding & Supplies	46	Tammy D. Catering	31
O'Neal's Jewelers	10, 38	TH Rogers Lumber Co.	35
OG&E	6, 21, 45	The Daisy Patch	32, 43
Oklahoma AgCredit	38	The Grille Restaurant & Bar	31, 34, 42
Oklahoma Blood Institute Ardmore	36	The House Church	31
Oklahoma Natural Gas	45	The Valley Mercantile Boutique & Gifts	34, 43
P.A.S.S. Coalition for a Drug Free Community	23, 44	The Vault	15, 29, 34, 51
Paine Business Machines	10, 40	The White Feather	43
Pauls Valley Chiropractic	36	Tio's Restaurant	31, 42
Pauls Valley Democrat	5, 28, 39, 51	Town & Country Insurance	37
Pauls Valley Eye Clinic	36	Traditions Health	36, 52
Pauls Valley First Baptist Church	31	TriVAN Roofing Systems	6, 32, 43
Pauls Valley Glass & Mirror Co.	35	Valir Hospice	36
Pauls Valley Health & Rehab	40	Valley Blossom Shop	34, 43
Pauls Valley National Bank	Cover, 6, 11, 30	Valley Body Shop	30
Pauls Valley Public Schools	11, 13, 33, 47, 51	Valley Dental	36
Pauls Valley Tag Office	22, 38, 44	Valley Gifts & Awards	30, 43
Pauls Valley Tire & Lube	30	Valley Market	39
Physical Therapy Central	4, 6, 36	Valley Wash Rack	31
Pro Ag Services Inc.	28	Walmart Distribution Center	2, 11, 33
Punkins BBQ & Catfish	31, 34, 42	Walmart Supercenter	11, 35, 41, 43
Purcell Municipal Hospital	36	Wash Bar	38
Reavis Rexall Drugstore	6, 41, 43	Washita Casino	1, 29, 31, 33
Redeemed and Restored Wellness	35	Washita Valley Living Center	10, 40
Rock Fitness	42	Whitebead School District	12, 13, 33
Rodeway Inn	37	Williamsburg Animal Hospital	46
Royal Theatre	15, 29, 45	Williamson's Furniture	35, 43
Rural Electric Co-op	21, 34, 45	Wooster Funeral Home	34
Salt Real Estate	41	Yeatts Finance & Furniture	29, 35, 38, 43
Second Wind Travel and Charters	45	York Janitorial Supplies & Equipment LLC	38
Seth Wadley Auto Group	Cover, 11, 30		
Seth Wadley Ford	30		
Sharpe's Department Store	43		
Shelter Insurance	37		
Sherwin-Williams Paints	40		
Simmons Bank - Wynnewood	30		
Sooner Home Furnishings	4, 6, 29, 35, 43		
Southern Market	45		
Southern Workforce Board	23, 33, 44, 46		
Starbucks Coffee Co.	32, 42		
State Bank of Wynnewood	30		

Individual Chamber members can be reached by contacting the Chamber office.

- Lempges, Steve
- McCortney, Greg, Sen.
- McElroy, Martha Jo
- Meisel, Bonnie
- Richardson, Nick
- Stark, Kevin
- Virgin, Jeff

MEMBER DIRECTORY

A

ABSTRACT & TITLE COMPANIES

GARVIN COUNTY ABSTRACT 218 W Paul (405) 238-3132
Julie Caughey Pauls Valley, OK 73075

ACCOUNTING & BOOKKEEPING

GRANT & KATIE JOHNSON, CPA, PLLC 313 N Walnut (405) 238-2727
Pauls Valley, OK 73075 GrantandKatieJohnsonCPA.com

KRISTI DOBBINS CPA 106 E McClure (405) 238-6447
Pauls Valley, OK 73075

LEGACY ACCOUNTING CPA, PLLC 112 W Paul (405) 238-6427
Kyle Readnour Pauls Valley, OK 73075 LegacyAccountingCPA.com

ADVERTISING

CHICKASAW COUNTRY MARKETING ASSOC. (580) 618-5979
Brooke Miller ChickasawCountry.com

GARVIN COUNTY NEWS STAR 210 W Paul (405) 867-4457
Chris & Suzanne Mackey Pauls Valley, OK 73075 GCNewsStar.com

PAULS VALLEY DEMOCRAT 108 S Willow (405) 238-6464
Barry Porterfield Pauls Valley, OK 73075 PaulsValleyDailyDemocrat.com

AGRICULTURE

PRO AG SERVICES INC. P.O. Box 366 (405) 238-7363
Donnie & Sharon Sharp Pauls Valley, OK 73075 ProAgOK.com

AGRITOURISM

BAR NUNN RANCH P.O. Box 720 (405) 238-0903
Les Nunn Pauls Valley, OK 73075

LAKEVIEW LAVENDER FARM 21536 NCR 3200 (405) 238-0042
Marilou Munn Pauls Valley, OK 73075 Facebook@LakeviewLavenderFarm

AIR AMBULANCE SERVICES

AIRMEDCARE NETWORK 430 Airport Rd (877) 244-2890
Christopher Atwood Pauls Valley, OK 73075

APARTMENTS

APPLE RIDGE SENIORS Kristine Tibbetts	123 Michael Blvd Pauls Valley, OK 73075	(405) 926-8784
--	--	----------------

APPLIANCES

SOONER HOME FURNISHINGS Mark Thompson & Amy and Mickey Brown	101 E Paul Pauls Valley, OK 73075	(405) 238-3334 SoonerHome.net
YEATTS FINANCE & FURNITURE Ricky Brown	116 E Paul Pauls Valley, OK 73075	(405) 238-3334 @YeattsHomeFurnishings

ARCHITECTURE

INTOLUBBE ASSOCIATES Steve Reinhart	530 N Pecan St Pauls Valley, OK 73075	(405) 276-7884 facebook.com/Intolubbe
--	--	--

ART GALLERIES

THE VAULT Susie Agee	111 E Paul, Suite 2 Pauls Valley, OK 73075	(405) 343-6610 TheVaultPaulsValley.com
-------------------------	---	---

ASSISTED LIVING

GARVIN COUNTY COMMUNITY LIVING CENTER Cathy Cash	1800 Enterprise Blvd Pauls Valley, OK 73075	(405) 238-3773 GCCLC.com
---	--	-----------------------------

ATTORNEYS

DAN BARNEY, ATTORNEY Dan Barney	100 E Paul Ave Pauls Valley, OK 73075	(405) 238-5564
GARVIN AGEE CARLTON, P.C.	101 E Grant Pauls Valley, OK 73075	(405) 238-1000 GAClawyers.com

ATTRACTIONS/AMUSEMENTS

JETSTREAM CASINO	2001 W Airline Rd. Pauls Valley, OK 73075	(405) 331-2500 JetStreamCasino.com
ROYAL THEATRE Revae Brewer	119 E Paul Pauls Valley, OK 73075	(405) 238-7002 Facebook@PaulsValleyMovies
THE VAULT Susie Agee	111 E Paul, Suite 2 Pauls Valley, OK 73075	(405) 343-6610 TheVaultPaulsValley.com
WASHITA CASINO	Exit 79 Paoli, OK 73074	(405) 484-7778 WashitaCasino.com

A

MEMBER DIRECTORY

AUTO DEALERS

SETH WADLEY AUTO GROUP	200 N Ballard Pauls Valley, OK 73075	(405) 238-9681 SethWadley.com
SETH WADLEY FORD	333 N. Butler Rd. Pauls Valley, OK 73075	(405) 238-6466 SethWadleyFord.com

AUTO REPAIRS & SERVICE

MNS AUTO & TIRE Colten Blackwood	37164 Hwy 19 Pauls Valley, OK 73075	(405) 207-9848 MNSRepair.com
PAULS VALLEY TIRE & LUBE John Hillin	2299 W Grant Pauls Valley, OK 73075	(405) 926-2100
VALLEY BODY SHOP Jess Patton	723 W Grant Pauls Valley, OK 73075	(405) 238-3412 Facebook@ValleyBody

AWARDS

VALLEY GIFTS & AWARDS Connie Smith	115 E Paul Pauls Valley, OK 73075	(405) 238-7500
--	--------------------------------------	----------------

B

BAKERY

FIELD'S PIES Chris Field & Jenny Wallace	100 Fields Row Pauls Valley, OK 73075	(405) 238-7381 FieldsPies.com
--	--	----------------------------------

BANKING

FIRST UNITED BANK JD Bostic	315 W Grant (Main) 2000 W. Grant Pauls Valley, OK 73075	(405) 238-3341 (405) 207-9410 FirstUnitedBank.com
PAULS VALLEY NATIONAL BANK Jonathan Grimmett	101 W Paul (Main) 101 N. Indian Meridian Rd. Pauls Valley, OK 73075	(405) 238-9321 (405) 238-2888 PVNB.com
SIMMONS BANK Stephanie Eastwood	201 S Dean McGee Wynnewood, OK 73098	(405) 665-2031 SimmonsBank.com
STATE BANK OF WYNNEWOOD Jim Waters	177 S Dean A. McGee Ave Wynnewood, OK 73098	(405) 665-2001 SBWOK.com

B

MEMBER DIRECTORY

BARS

EL TAPATIO MEXICAN RESTAURANT	2609 W Grant Pauls Valley, OK 73075	(405) 983-9606 ElTapatioOK.com
THE GRILLE RESTAURANT & BAR Amy Richey	2602 W Grant Pauls Valley, OK 73075	(405) 207-9080
TIO'S RESTAURANT Thomas Vaughn & Matt Venable	1960 W Grant Pauls Valley, OK 73075	(405) 238-3535 Facebook@TIOsPaulsValleyOK
WASHITA CASINO	Exit 79 Paoli, OK 73074	(405) 484-7778 WashitaCasino.com

C

CAR WASH

MO-B CAR WASH Bill Menefee, III	800 W Grant Pauls Valley, OK 73075	(405) 238-4543
VALLEY WASH RACK Joe Webb	2101 W Grant Pauls Valley, OK 73075	(405) 756-6683

CASINOS

JETSTREAM CASINO	2001 W Airline Rd. Pauls Valley, OK 73075	(405) 331-2500 JetStreamCasino.com
WASHITA CASINO	Exit 79 Paoli, OK 73074	(405) 484-7778 WashitaCasino.com

CATERERS

EL TAPATIO MEXICAN RESTAURANT	2609 W Grant Pauls Valley, OK 73075	(405) 983-9606 ElTapatioOK.com
PUNKINS BBQ & CATFISH Casey & Krista Green	1911 W Grant Pauls Valley, OK 73075	(405) 238-2320 Facebook@Punkins.BBQ.Catfish
TAMMY D. CATERING Tammy Delaplain	603 N Santa Fe Pauls Valley, OK 73075	(405) 238-8401

CHURCHES

FIRST PRESBYTERIAN CHURCH Chas Gowing	320 N Walnut Pauls Valley, OK 73075	(405) 238-6667 FPCPVOK.com
FIRST UNITED METHODIST CHURCH Jay Pi	401 N Willow Pauls Valley, OK 73075	(405) 238-3354 FBCPV.org
PAULS VALLEY FIRST BAPTIST CHURCH Bryan Trant	213 N Ash Pauls Valley, OK 73075	(405) 238-3431
THE HOUSE Brandon Henry	33440 Airline Road Pauls Valley, OK 73075	(405) 805-6159 TheHousePV.com

C

MEMBER DIRECTORY

CIVIC CLUBS

LIONS CLUB Kathy Hall	P.O. Box 1023 Pauls Valley, OK 73075	(405) 238-7568
---------------------------------	---	----------------

COFFEE SHOPS

IRON WOLF COFFEE HOUSE Isaiah and Taylor Hodges	122 W Charles Ave Pauls Valley, OK 73075	(405) 626-5780 Facebook@IWCHDavis
STARBUCKS COFFEE CO. Lil Walker	50 N. Ballard Pauls Valley, OK 73075	(405) 926-8997

CONCRETE

L.A. JACOBSON, INC. Bert Jacobson	102 E Bethlehem Rd Pauls Valley, OK 73075	(405) 238-9313 LAJacobson.com
BETTER BARNs Robert Bittle	40972 Hwy 19 Pauls Valley, OK 73075	(405) 207-6714 BetterBarns.net

CONSIGNMENT

THE DAISY PATCH Kris Rylander	106 E Paul Pauls Valley, OK 73075	(405) 238-7407
---	--------------------------------------	----------------

CONSTRUCTION

J & R CONSTRUCTION David Assad	712 East Avenue Pauls Valley, OK 73075	(405) 238-0215
STEELCO, INC. Robert Snell	30365 E County Road 1510 Paoli, OK 73074	(405) 484-7115 SteelcoInc.com
TRIVAN ROOFING SYSTEMS OF OKLAHOMA Travis John	608 S Chickasaw Pauls Valley, OK 73075	(405) 345-7553 TriVanRoofing.com

CONSULTING

JC BUSINESS COACHING AND CONSULTING Jacob Chapman	23646 E. County Rd. 1595 Elmore City, OK 73433	(405) 445-4729 JC-BCC.com
---	---	------------------------------

CONVENIENCE STORES

JETSTREAM CASINO	2001 W Airline Rd. Pauls Valley, OK 73075	(405) 331-2500 JetStreamCasino.com
LOVE'S COUNTRY STORE #50 Karen Evans	309 W Grant Pauls Valley, OK 73075	(405) 238-5861 Loves.com/locations/50

CIV - CON

C

C

MEMBER DIRECTORY

CONVENIENCE STORES (Cont.)

LOVE'S TRAVEL STOP Logan Lewis	1601 Airline Rd Pauls Valley, OK 73075	(405) 207-9692 Loves.com/locations/452
WASHITA CASINO	Exit 79 Paoli, OK 73074	(405) 484-7778 WashitaCasino.com

D

DISTRIBUTION CENTERS

WALMART DISTRIBUTION CENTER Larry Turner	20634 S Indian Meridan Pauls Valley, OK 73075	(405) 207-5000 Walmart.com
--	--	-------------------------------

E

EDUCATION

MID-AMERICA TECHNOLOGY CENTER Wade Jarlsberg	I-35, Exit 86 Wayne, OK 73095	(572) 215-2060 MATech.edu
MURRAY STATE COLLEGE Jordyn Frazier	One Murray Campus Tishomingo, OK 73460	(580) 387-7000 MSCOK.edu
PAULS VALLEY PUBLIC SCHOOLS Brett Knight	301 N Chickasaw Pauls Valley, OK 73075	(405) 238-6453 PaulsValleySchools.com
WHITEBEAD PUBLIC SCHOOL Jason Midkiff	16476 N CR 3200 Pauls Valley, OK 73075	(405) 238-3021 Whitebead.net

ELECTRICAL

HUNTER SUPER TECHS		(580) 223-9090 HunterSuperTechs.com
---------------------------	--	--

EMPLOYMENT SERVICES

SOUTHERN WORKFORCE BOARD Connie Frazier	522 S Chickasaw Pauls Valley, OK 73075	(405) 238-2988 SWB-OK.com
---	---	------------------------------

EQUIPMENT

JAMES SUPPLIES Jay & Debbie Harper	410 S Chickasaw Pauls Valley, OK 73075	(405) 238-6421 JamesSupplies.com
NABORS WELDING & SUPPLIES Mark Nabors	797 S Santa Fe St Pauls Valley, OK 73075	(405) 926-2040 Facebook@NaborsWelding

E

EVENT & MEETING SPACES

BOSA COMMUNITY CENTER Audrey Williams	207 Bosa Ave. Pauls Valley, OK 73075	(405) 238-3636
DONALD W. REYNOLDS RECREATION CENTER Mike Arie	1005 N. Willow Pauls Valley, OK 73075	(405) 238-1307
PAULS VALLEY CHAMBER OF COMMERCE Nancy Runge	112 E. Paul Ave. Pauls Valley, OK 73075	(405) 238-6491
PUNKINS BBQ & CATFISH Casey & Krista Green	1911 W Grant Pauls Valley, OK 73075	(405) 238-2320 Facebook@Punkins.BBQ.Catfish
SANTE FE DEPOT MUSEUM & PAVILION Lorraine Walker	204 S Santa Fe Pauls Valley, OK 73075	(405) 238-2244
RURAL ELECTRIC COOPERATIVE Steven Beck	13942 HWY 76 South Lindsay, OK 73052	(405) 756-3104 RECOK@coop.com
THE GRILLE RESTAURANT & BAR Amy Richey	2602 W Grant Pauls Valley, OK 73075	(405) 207-9080 <i>(cont'd next page)</i>
THE VALLEY MERCANTILE BOUTIQUE & GIFTS Brandalyn Wright	300 S. Chickasaw St., Ste. B Pauls Valley, OK 73075	(580) 504-4851 TheValleyGifts.com
THE VAULT Susie Agee	111 E Paul, Ste. 2 Pauls Valley, OK 73075	(405) 343-6610 TheVaultPaulsValley.com
WACKER PARK City of Pauls Valley Parks & Recreation	1005 N. Willow Pauls Valley, OK 73075	(405) 238-1307

F

FINANCIAL ADVISORS

EDWARD JONES Jasen Agee	111 E Paul, Suite 1 Pauls Valley, OK 73075	(405) 331-3508 EdwardJones.com
EDWARD JONES Gregory Hendrix	200 W Paul Pauls Valley, OK 73075	(405) 238-9319 EdwardJones.com
GARVIN COUNTY FARM BUREAU Casey Clayborn	1212 W. Chickasaw Pauls Valley, OK 73075	(405) 238-7336 OKFarmBureau.org/counties/ Garvin

FLORISTS

VALLEY BLOSSOM SHOP Kristy Elkins	102 E Paul Avenue Pauls Valley, OK 73075	(405) 238-3326 ValleyBlossomShop.com
---	---	--

FUNERAL HOMES

STUFFLEBEAN-COFFEY FUNERAL HOME David & Linda Coffey	500 N Willow Pauls Valley, OK 73075	(405) 238-3356 StufflebeanFuneralHome.com
WOOSTER FUNERAL HOME Charles & Brenda Wooster	1601 S Chickasaw Pauls Valley, OK 73075	(405) 238-7574 WoosterFuneralHomes.com

EVE - FUN

E-F

F

MEMBER DIRECTORY

FURNITURE

SOONER HOME FURNISHINGS Mark Thompson & Amy and Mickey Brown	101 E Paul Pauls Valley, OK 73075	(405) 238-3334 SoonerHome.net
WILLIAMSON'S FURNITURE Denny & Tina Williamson	420 W Grant Pauls Valley, OK 73075	(405) 238-3992 WilliamsonsFurnitureInc.com
YEATTS FINANCE & FURNITURE Ricky Brown	116 E Paul Pauls Valley, OK 73075	(405) 238-5536 @YeattsHomeFurnishings

G

GLASS

PAULS VALLEY GLASS & MIRROR LLC Brent & Ellen Sager	706 S Chickasaw Pauls Valley, OK 73075	(405) 238-2756 Facebook.com/PaulsValleyGlass
---	---	---

GOVERNMENT

CHICKASAW NATION Sheilla Brashier	P.O. Box 627 Ada, OK 74821	(580) 332-1165 Chickasaw.net
CITY OF PAULS VALLEY Joe Livingston	100 W Paul Pauls Valley, OK 73075	(405) 238-3308 PaulsValley.com

GROCERS & MARKETS

HOMELAND Jason Lee	509 S Chickasaw Pauls Valley, OK 73075	(405) 238-7550 HomelandStores.com
WALMART SUPERCENTER Dan Moore	2008 W Grant Pauls Valley, OK 73075	(405) 238-7353 Walmart.com

H

HARDWARE & LUMBER

ACE HARDWARE & LUMBER Matt Meyerdirk	1340 W Grant Pauls Valley, OK 73075	(405) 207-9464 ElkSupply.com
TH ROGERS LUMBER CO. Sharina Griffin	401 S Willow Pauls Valley, OK 73075	(405) 238-3331 THRogers.com/Pauls-Valley

HEALTH & WELLNESS

LIGHTHOUSE BEHAVIORAL WELLNESS CENTER Kristin Smith	109 S Willow Pauls Valley, OK 73075	(405) 238-7311 LighthouseOK.com
REDEEMED AND RESTORED WELLNESS Ashli Stamper	106 Burr Ave Pauls Valley, OK 73075	(405) 926-2002 RandRWellness.org

HEALTHCARE/PROVIDERS

DENTAL

COMPREHENSIVE DENTISTRY Tevi & Tyler Winters, DDS	34637 Airline Rd, Suite 1 Pauls Valley, OK 73075	(405) 238-2222 PaulsValleyDentist.com
JAMIE L. MEANS, DDS	318 Melville Pauls Valley, OK 73075	(405) 238-3600 JamieMeansDDS.com
VALLEY DENTAL Dr. Joseph Fleming	101 Miller Dr. Pauls Valley, OK 73075	(405) 238-2574 ValleyDentalOK.com.

DOCTORS

DR. BRIAN A. ALLEE, DO SSM Health Medical Group	105 N Meridian Pauls Valley, OK 73075	(405) 207-9800 SSMHealth.com
DR. KIM JONES, MD	1200 S Walnut Pauls Valley, OK 73075	(405) 207-9000 JonesFamilySkinCare.com
MERCY CLINIC PRIMARY CARE & GENERAL SURGERY Dr. Dennis Whitehouse, DO Dr. Charles Mitchell, DO	415 W Guy Pauls Valley, OK 73075	(405) 238-1170 Mercy.net

EYE CARE

PAULS VALLEY EYE CLINIC Scott Mendell	1811 W Grant Pauls Valley, OK 73075	(405) 238-6459 PVEyeClinic.com
---	--	-----------------------------------

HOSPITAL

PURCELL MUNICIPAL HOSPITAL Renee' Barber	2301 N. 9th Ave. Purcell, OK 73080	(405) 527-6524 PurcellHospital.com
--	---------------------------------------	---------------------------------------

MISCELLANEOUS

ABIDING HOME HEALTH	409 N Green Ave, Ste. C Purcell, OK 73080	(405) 343-3020
AIRMEDCARE NETWORK Christopher Atwood	430 Airport Rd. Pauls Valley, OK 73075	(405) 244-2890
CORNERSTONE CAREGIVING	480 24th Ave NW, Ste. 200-25 Norman, OK 73069	(405) 561-6848 CornerstoneCaregiving.com/norman
OKLAHOMA BLOOD INSTITUTE ARDMORE Meagon Thompson	2235 Merrick Dr Ardmore, OK 73401	(580) 798-3700 OBI.org
PAULS VALLEY CHIROPRACTIC Dr. Nathan Schmidt	400 S. Walnut Pauls Valley, OK 73075	(405) 926-2033 PaulsValleyChiropractic.com
PHYSICAL THERAPY CENTRAL Kahn Nirschl	34637 Airline Rd Pauls Valley, OK 73075	(405) 238-7000 PTCentral.org
TRADITIONS HEALTH Connie Upton	519 W Delaware St Purcell, OK 73080	(405) 527-0027 TraditionsHealth.com
VALIR HOSPICE Rita Ham	112A Burr Ave Pauls Valley, OK 73075	(405) 609-3636 Valir.com

H

MEMBER DIRECTORY

HEATING & AIR

HUNTER SUPER TECHS

(580) 223-9090
HunterSuperTechs.com

HOTELS

BEST WESTERN PLUS Mohammad Hussain	2509 W Grant Pauls Valley, OK 73075	(405) 444-6035 BestWestern.com
COMFORT INN & SUITES Yogesh Thakkar	103 S Humphrey Blvd Pauls Valley, OK 73075	(405) 207-9730 ChoiceHotels.com
ECONOMY INN EXPRESS Jack Patel	1409 S Chickasaw Pauls Valley, OK 73075	(405) 238-3321 EconomyInnExpressPaulsValley.us
HAMPTON INN & SUITES Victor Patel	105 S Humphrey Rd Pauls Valley, OK 73075	(405) 238-7700 Hilton.com
HOLIDAY INN EXPRESS & SUITES Pete & Sonal Patel	2412 W Grant Pauls Valley, OK 73075	(405) 207-9434 IHG.com
RODEWAY INN Newsee Patel	2415 W Grant Pauls Valley, OK 73075	(405) 238-6415

I

INSURANCE

GARVIN COUNTY FARM BUREAU Casey Clayborn	1212 S Chickasaw Pauls Valley, OK 73075	(405) 238-7366 OKFarmBureau.org/counties/garvin
INSURANCE ONE Craig Ensey	205 S Chickasaw Pauls Valley, OK 73075	(405) 238-7331 Ins1.net
JASON BRIDWELL STATE FARM AGENCY Jason Bridwell	311 W Cherokee St, Ste A Lindsay, OK 73052	(405) 756-3263 BridwellInsurance.com
SHELTER INSURANCE Kive Kerr	516 S Chickasaw Pauls Valley, OK 73075	(405) 238-9363
STATE FARM INSURANCE CO. Charlie Weeks	617 W Paul Pauls Valley, OK 73075	(405) 238-6483
TOWN & COUNTRY INSURANCE Lori Niemyer & Jenice Tate	215 S Chickasaw Pauls Valley, OK 73075	(405) 238-5589

INTERNET SERVICES

360 BROADBAND Chelsea Stanley	17375 US Hwy. 70 Durant, OK 74701	(855) 328-5099 360broadband.com
AT&T Jan Moran	101 S Webster Norman, OK 73069	(405) 360-1388 ATT.com
ATLINK SERVICES Tom Fraley	Oklahoma City, OK	(405) 753-7151 AtLinkServices.com
T-MOBILE Zakari Childress	1402 W. Grant, Ste. A Pauls Valley, OK 73075	(405) 226-9959

J

JANITORIAL SUPPLIES

YORK JANITORIAL SUPPLIES & EQUIPMENT	311 E Grant, Suite C	(405) 331-0916
Robert York	Pauls Valley, OK 73075	YorkJanSaN.com

JEWELERS

O'NEAL'S JEWELERS	(405) 238-2310	(405) 238-2310
Miles & Mary Philpott	ONealsJewelers.com	ONealsJewelers.com

L

LAUNDROMAT

WASH BAR	500 S. Chickasaw St.	(405) 207-0975
Josh Chapman	Pauls Valley, OK 73075	MyWashBar.com

LAWN CARE

EZ GREEN LLC	702 S Chickasaw	(405) 207-1451
Terry Dillard	Pauls Valley, OK 73075	

LIBRARY

NORA SPARKS WARREN LIBRARY	210 N Willow St	(405) 238-5188
	Pauls Valley, OK 73075	PaulsValley.okpls.org

LICENSE SERVICES

PAULS VALLEY TAG OFFICE	113 E Paul Ave	(405) 238-5534
Marie Yeiser	Pauls Valley, OK 73075	

LIQUOR STORES

BACKROAD SPIRITS	101 N. Carter St., Ste. 100	(405) 207-9251
Jason Bean	Pauls Valley, OK 73075	Facebook@BackroadSpiritsLLP
LOU'S LIQUORS	635 W Grant	(405) 238-5594
Alpha Elkins	Pauls Valley, OK 73075	Facebook@LousLiquor

LOANS & LENDING SERVICES

CONTINENTAL CREDIT	301 S Chickasaw St	(405) 238-3614
Bonnie Seymour	Pauls Valley, OK 73075	SecurityFinance.com
OKLAHOMA AGCREDIT	509 W Paul	(405) 238-5573
Kelly Crissman	Pauls Valley, OK 73075	OKAgCredit.com
SUN LOAN & TAX SERVICE	2000 W Grant, Suite 10	(405) 238-9608
Tanya Eppler	Pauls Valley, OK 73075	SunLoan.com
YEATTS FINANCE & FURNITURE	116 E Paul	(405) 238-5536
Ricky Brown	Pauls Valley, OK 73075	@YeattsHomeFurnishings

M

MEMBER DIRECTORY

MANUFACTURING & INDUSTRY

AMCOR FLEXIBLES NORTH AMERICA Mitch Tucker	200 N Indian Meridian Pauls Valley, OK 73075	(405) 207-2200 Amcors.com
BETTER BARNS Robert Bittle	40972 Hwy 19 Pauls Valley, OK 73075	(405) 207-6714 BetterBarns.net
BURFORD CORP. Cinnamon Walker	11284 Hwy 74 Maysville, OK 73057	(405) 867-4467 Burford.com
COLLEY & COMPANY Reid Colley	200 East Coffee Avenue Pauls Valley, OK 73075	(405) 238-3347 ColleySteel
COVERCRAFT INDUSTRIES, LLC Clay Callan	100 Enterprise Blvd. Pauls Valley, OK 73075	(405) 238-9651 Covercraft.com/us/en
EDWARDS CANVAS, INC.	17499 HWY 77 Pauls Valley, OK 73075	(405) 238-7551 EdwardsCanvas
FIELD'S PIES Chris Field & Jenny Wallace	100 Fields Row Pauls Valley, OK 73075	(405) 238-7381 FieldsPies.com
L.A. JACOBSON, INC. Bert Jacobson	102 E Bethlehem Rd Pauls Valley, OK 73075	(405) 238-9313 LAJacobson.com

MOTORSPORT TRANSPORTATION

ELITE MOTORSPORTS	26058 N County Rd 3249 Wynnewood, OK 73098	(405) 665-2727 EliteMotorsportsllc.com
--------------------------	---	---

MUSEUMS

SANTA FE DEPOT MUSEUM Lorraine Walker	204 S Santa Fe Pauls Valley, OK 73075	(405) 238-2244
---	--	----------------

N

NEWSPAPERS

GARVIN COUNTY NEWS STAR Chris & Suzanne Mackey	210 W Paul Pauls Valley, OK 73075	(405) 867-4457 GCNewsStar.com
PAULS VALLEY DEMOCRAT Barry Porterfield	108 S Willow Pauls Valley, OK 73075	(405) 238-6464 PaulsValleyDailyDemocrat.com

NURSERY

VALLEY MARKET	505 S Walnut Pauls Valley, OK 73075	(405) 207-1155 GCCCLC.com
----------------------	--	------------------------------

N

NURSING HOME

PAULS VALLEY HEALTH & REHAB Gayna Reynolds	1413 S. Chickasaw St. Pauls Valley, OK 73075	(405) 238-6411
WASHITA VALLEY LIVING CENTER Linda Justice	105 Washington Pauls Valley, OK 73075	(405) 238-5528

O

OFFICE SUPPLIES/EQUIPMENT

HINKLE PRINTING & OFFICE SUPPLY Buddy Strickland	110 E Paul Pauls Valley, OK 73075	(405) 238-9308 HinklesPV.com
PAINE BUSINESS MACHINES Jeff Paine	205 W Paul Pauls Valley, OK 73075	(405) 238-7568 PaineBusiness.com

OIL & GAS INDUSTRY

BAJA SERVICES Bobby Drennan		(405) 207-9202
---------------------------------------	--	----------------

P

PAINT

SHERWIN-WILLIAMS PAINT STORE Steven Sawyers	502 S Chickasaw Pauls Valley, OK 73075	(405) 238-2586 Sherwin-Williams.com
---	---	--

PARTY RENTAL

EG² Sammy Lopez	Pauls Valley, OK 73075	(405) 268-9312
--------------------------------------	------------------------	----------------

PERFORMING ARTS

GARVIN COUNTY CHORAL SOCIETY & SINFONIETTA Dan Barney	P.O. Box 1334 Pauls Valley, OK 73075	GarvinCountySings.com
---	---	-----------------------

PEST CONTROL

ALLSTATE TERMITE & PEST CONTROL, INC. Jeremy Berryhill & Larry Berryhill	105 Michelin Rd Ardmore, OK 73401	(580) 226-5555 BadOnBugs.com
--	--------------------------------------	---------------------------------

P

MEMBER DIRECTORY

PHARMACY

HOMELAND Jason Lee	509 S Chickasaw Pauls Valley, OK 73075	(405) 238-7550 HomelandStores.com
LEGACY DRUG Emily Smith	111 W Grant Pauls Valley, OK 73075	(405) 238-3305
REAVIS REXALL DRUGSTORE Jack & Linda Justice	110 W Burr Pauls Valley, OK 73075	(405) 238-7391 ReavisDrugRX.com
WALMART SUPERCENTER Dan Moore	2008 W Grant Pauls Valley, OK 73075	(405) 238-7353 Walmart.com

PLUMBING

HUNTER SUPER TECHS		(580) 223-9090 HunterSuperTechs.com
---------------------------	--	--

PRINTING

HINKLE PRINTING & OFFICE SUPPLIES Buddy Strickland	110 E Paul Pauls Valley, OK 73075	(405) 238-9308 HinklesPV.com
--	--------------------------------------	---------------------------------

R

RADIO STATIONS

KBLP-105.1 FM Jason Wallenberg Kevin Scruggs	204 S Main Street Lindsay, OK 73052	(405) 756-4438 KBLPradio.com
KICM 97.7 FM 661 Bill Countryman	1st Ave NW Ardmore, OK 73401	(580) 226-9797 KICM.com
KIXO KIX-106 FM Sherry Lynn	1101 Hwy 81 N Marlow, OK 73055	(405) 238-1551

REAL ESTATE

EASTRIDGE COUNTRY ESTATES Carol Yoakum		(303) 588-6072 Eastridge-Estates.com
GAMBLE REALTY Tim Gamble	110 N Willow Pauls Valley, OK 73075	(405) 238-5326
JARMAN REALTY Janna Jarman	803 N Ash Pauls Valley, OK 73075	(405) 238-2383 JarmanRealtyOK.com
SALT REAL ESTATE Skylar Finnestad	300 S Chickasaw Pauls Valley, OK 73075	(405) 207-7956 Salt.RealEstate

R

MEMBER DIRECTORY

RECREATION

DONALD W. REYNOLDS RECREATION CENTER Mike Arie	1005 N. Willow Pauls Valley, OK 73075	(405) 238-1307
PAULS VALLEY MUNICIPAL GOLF COURSE	1910 S. West Ave. Pauls Valley, OK 73075	(405) 238-7462
PAULS VALLEY WATERPARK	1005 N. Willow Pauls Valley, OK 73075	(405) 238-1307
ROCK FITNESS 24 Frank Perry	1553 W Grant Pauls Valley, OK 73075	(405) 665-2440 RockFitnessWynnewood.com

RESTAURANTS

BOOM-A-RANG DINER Laura Danser	115 S. Chickasaw Pauls Valley, OK 73075	(405) 238-2905 BoomarangDiner.com
CHICKEN EXPRESS Rick & Glenda Brown	2416 W Grant Pauls Valley, OK 73075	(405) 238-4456 ChickenOK.com
DOMINO'S Scott Rodekohr	310 S Chickasaw Pauls Valley, OK 73075	(405) 926-8130 Dominos.com
EL TAPATIO MEXICAN RESTAURANT	 2609 W Grant Pauls Valley, OK 73075	(405) 983-9606 ElTapatioOK.com
IRON WOLF COFFEE HOUSE Isaiah and Taylor Hodges	122 W Charles Ave Pauls Valley, OK 73075	(405) 626-5780 Facebook@IWCHDavis
MOORE SONIC GROUP Joe & Janet Moore	517 S Willow Ave Pauls Valley, OK 73075	(405) 238-7594 SonicDriveIn.com
SONIC DRIVE-IN (DOWNTOWN)	201 N Pine Pauls Valley, OK 73075	(405) 238-3301
SONIC DRIVE-IN (INTERSTATE)	2505 W Grant Pauls Valley, OK 73075	(405) 207-9620
PUNKINS BBQ & CATFISH Casey & Krista Green	1911 W Grant Pauls Valley, OK 73075	(405) 238-2320 Facebook@Punkins.BBQ.Catfish
STARBUCKS COFFEE CO. Lil Walker	50 N. Ballard Pauls Valley, OK 73075	(405) 926-8997
TACO BELL Nicole Coffey	100 Ballard Rd Pauls Valley, OK 73075	(405) 866-5072 TacoBell.com
THE GRILLE RESTAURANT & BAR Amy Richey	2602 W Grant Pauls Valley, OK 73075	(405) 207-9080
TIO'S RESTAURANT Thomas Vaughn & Matt Venable	1960 W Grant Pauls Valley, OK 73075	(405) 238-3535 Facebook@TIOsPaulsValleyOK

R

MEMBER DIRECTORY

RETAIL

ACE HARDWARE & LUMBER Matt Meyerdirk	1340 W Grant Pauls Valley, OK 73075	(405) 207-9464 ElkSupply.com
BACKROAD SPIRITS Jason Bean	101 N. Carter St., Ste. 100 Pauls Valley, OK 73075	(405) 207-9251 Facebook@BackroadSpiritsLLP
HINKLE PRINTING & OFFICE SUPPLIES Buddy Strickland	110 E Paul Pauls Valley, OK 73075	(405) 238-9308 HinklesPV.com
JETSTREAM CASINO	2001 W Airline Rd. Pauls Valley, OK 73075	(405) 331-2500 JetStreamCasino.com
LOU'S LIQUORS Alpha Elkins	635 W Grant Pauls Valley, OK 73075	(405) 238-5594 Facebook@LousLiquor
LOVE'S COUNTRY STORE #50 Karen Evans	309 W Grant Pauls Valley, OK 73075	(405) 238-5861 Loves.com/locations/50
LOVE'S TRAVEL STOP Logan Lewis	1601 Airline Rd Pauls Valley, OK 73075	(405) 207-9692 Loves.com/locations/452
REAVIS REXALL DRUGSTORE Jack & Linda Justice	110 W Burr Pauls Valley, OK 73075	(405) 238-7391 ReavisDrugRX.com
SHARPE'S DEPARTMENT STORE Misty Joiner	208 S Chickasaw Pauls Valley, OK 73075	(405) 238-2000 SharpeClothing.com
SOONER HOME FURNISHINGS Mark Thompson & Amy and Mickey Brown	101 E Paul Pauls Valley, OK 73075	(405) 238-3334 SoonerHome.net
THE DAISY PATCH Kris Rylander	106 E Paul Pauls Valley, OK 73075	(405) 238-7407
THE VALLEY MERCANTILE BOUTIQUE & GIFTS Brandalyn Wright	300 S. Chickasaw St., Ste. B Pauls Valley, OK 73075	(580) 504-4851 TheValleyGifts.com
THE WHITE FEATHER Ashley Feathers	109 W Paul Pauls Valley, OK 73075	(405) 331-3050 ShopTheWhiteFeather.com
VALLEY BLOSSOM SHOP Kristy Elkins	102 E Paul Pauls Valley, OK 73075	(405) 238-3326 ValleyBlossomShop.com
VALLEY GIFTS & AWARDS Connie Smith	115 E Paul Pauls Valley, OK 73075	(405) 238-7500 GCCLC.com
WALMART SUPERCENTER Dan Moore	2008 W Grant Pauls Valley, OK 73075	(405) 238-7353 Walmart.com
WILLIAMSON'S FURNITURE Denny & Tina Williamson	420 W Grant Pauls Valley, OK 73075	(405) 238-3992 WilliamsonsFurnitureInc.com
YEATTS FINANCE & FURNITURE Ricky Brown	116 E Paul Pauls Valley, OK 73075	(405) 238-3334 @YeattsHomeFurnishings

ROOFING

TRIVAN ROOFING SYSTEMS OF OKLAHOMA Travis John	608 S Chickasaw Pauls Valley, OK 73075	(405) 345-7553 TriVanRoofing.com
--	---	-------------------------------------

S

SENIOR LIVING

APPLE RIDGE SENIORS Kristine Tibbetts	123 Michael Blvd Pauls Valley, OK 73075	(405) 926-8784
--	--	----------------

SHEET METAL PRODUCTS

STEELCO, INC. Robert Snell	I-35 Exit 79 Paoli, OK 73074	(405) 484-7115 SteelcoInc.com
-------------------------------	---------------------------------	----------------------------------

SOCIAL & HUMAN SERVICES

ABBOTT HOUSE CHILD ADVOCACY CENTER Andree Harper	517 S Willow St Pauls Valley, OK 73075	(405) 579-5800 Abbott-House.org
---	---	------------------------------------

DELTA COMMUNITY ACTION FOUNDATION Karen Nichols	225 W McClure Pauls Valley, OK 73075	(405) 238-3838 DeltaCAF.com
--	---	--------------------------------

FRONTLINE FAMILY SOLUTIONS Mindy Bellack	100 Maxwell Pauls Valley, OK 73075	(405) 238-9104 FrontlineFS.org
---	---------------------------------------	-----------------------------------

GARVIN COUNTY COMMUNITY LIVING CENTER, INC. Cathy Cash	1800 Enterprise Blvd. P.O. Box 1119 Pauls Valley, OK 73075	(405) 238-3773 GCCLC.com
---	--	-----------------------------

HERITAGE THERAPEUTIC SERVICES Christina Aggher	111 W McClure Pauls Valley, OK 73075	(405) 928-5996 HeritageTherapy.com
---	---	---------------------------------------

HOPE FOR TOMORROW FOR GARVIN COUNTY Amy Pack	P.O. Box 882 Pauls Valley, OK 73075	(405) 830-1799
---	--	----------------

LIGHTHOUSE BEHAVIORAL WELLNESS CENTER	109 S Willow Pauls Valley, OK 73075	(405) 238-7311 LighthouseOK.com
---------------------------------------	--	------------------------------------

P.A.S.S. COALITION FOR A DRUG FREE COMMUNITY Jayci Emerson	515 N Washington St Ardmore, OK 73401	(580) 490-9197
---	--	----------------

SOUTHERN WORKFORCE BOARD Connie Weeks	522 S Chickasaw Pauls Valley, OK 73075	(405) 238-2988 SWB-OK.com
--	---	------------------------------

STORAGE

BETTER BARNES Robert Bittle	40972 Hwy 19 Pauls Valley, OK 73075	(405) 207-6714 BetterBarnes.net
--------------------------------	--	------------------------------------

T

TAG AGENCIES

PAULS VALLEY TAG OFFICE Marie Yeiser	113 E Paul Ave Pauls Valley, OK 73075	(405) 238-5534
---	--	----------------

T

MEMBER DIRECTORY

TAX SERVICES

CONTINENTAL CREDIT Bonnie Seymour	301 S Chickasaw St Pauls Valley, OK 73075	(405) 238-3614 SecurityFinance.com
GRANT & KATIE JOHNSON, CPA, PLLC	313 N Walnut Pauls Valley, OK 73075	(405) 238-2727 GrantandKatieJohnsonCPA.com
KRISTI DOBBINS CPA	106 E McClure Pauls Valley, OK 73075	(405) 238-6447
LEGACY ACCOUNTING CPA, PLLC Kyle Readnour	112 W Paul Pauls Valley, OK 73075	(405) 238-6427 LegacyAccountingCPA.com
SUN LOAN & TAX SERVICE	2000 W Grant, Ste 10 Pauls Valley, OK 73075	(405) 238-9608 SunLoan.com

TELEVISION - CABLE & SATELLITE

AT&T Jan Moran	101 S Webster Norman, OK 73069	(405) 360-1388 ATT.com
------------------------------	-----------------------------------	---------------------------

THEATERS

ROYAL THEATRE Revae Brewer	119 E Paul Pauls Valley, OK 73075	(405) 238-7002 Facebook@PaulsValleyMovies
--------------------------------------	--------------------------------------	--

TRAVEL & TOURISM

SECOND WIND TRAVEL AND CHARTERS Lauren Robbins	117 E Paul Ave Pauls Valley, OK 73075	(405) 238-7245 SecondWindTravel.com
--	--	--

U

UTILITIES

OG&E Todd Thomsen		(800) 272-9741 OGE.com
OKLAHOMA NATURAL GAS Ryan Sproul	401 N Harvey Oklahoma City, OK 73102	(405) 889-7268 OklahomaNaturalGas.com
RURAL ELECTRIC COOPERATIVE Steven Beck	13942 HWY 76 South Lindsay, OK 73052	(405) 756-3104 RECOK.coop

V

VENDING

SOUTHERN MARKET Aldo Waters	9915 Highway 53 Ardmore, OK 73401	(580) 223-8282 SouthernVending.net
---------------------------------------	--------------------------------------	---------------------------------------

V

MEMBER DIRECTORY

VETERINARIANS

HOOVES AND PAWS ANIMAL HOSPITAL Nancy Wells	30820 110th St Paoli, OK 73074	(405) 484-7525 HoovesandPawsOK.com
WILLIAMSBURG ANIMAL HOSPITAL Dr. Carolyn Williams	34508 Airline Rd Pauls Valley, OK 73075	(405) 238-9311 WilliamsburgSAHosp.com

VOCATIONAL SERVICES

GARVIN COUNTY COMMUNITY LIVING CENTER Cathy Cash	1800 Enterprise Blvd Pauls Valley, OK 73075	(405) 238-3773 GCCLC.com
MID-AMERICA TECHNOLOGY CENTER Wade Jarlsberg	I-35, Exit 86 Wayne, OK 73095	(405) 449-3391 MATech.edu
SOUTHERN WORKFORCE BOARD Connie Frazier	522 S Chickasaw Pauls Valley, OK 73075	(405) 238-2988 SWB-OK.com

W

WASTE DISPOSAL & COLLECTION

GFL ENVIRONMENTAL Robert Starke	1910 S Chickasaw Pauls Valley, OK 73075	(405) 238-2012 GFLEnv.com
---	--	------------------------------

WELDING EQUIPMENT/SUPPLIES

JAMES SUPPLIES Jay & Debbie Harper	410 S Chickasaw Pauls Valley, OK 73075	(405) 238-6421 JamesSupplies.com
NABORS WELDING & SUPPLIES Mark Nabors	797 S Santa Fe St Pauls Valley, OK 73075	(405) 926-2040 Facebook@NaborsWelding

WINDOW TREATMENTS

JOHNSON'S DRAPERY Anita Cottrell	301 W Paul Pauls Valley, OK 73075	(405) 238-7341 Facebook@ohnsons.Draperies
--	--------------------------------------	--

WIRELESS SERVICES

360 BROADBAND Chelsea Stanley	17375 US Hwy. 70 Durant, OK 74701	(855) 328-5099 360broadband.com
AT&T Jan Moran	101 S Webster Norman, OK 73069	(405) 360-1388 ATT.com
T-MOBILE Zakari Childress	1402 W. Grant, Ste. A Pauls Valley, OK 73075	(405) 226-9959

2025 COMMUNITY CALENDAR

All calendar events are subject to change or cancellation. Please check with the organization prior to making plans to participate.

JAN

- 1 - NEW YEAR'S DAY
- 20 - MARTIN LUTHER KING JR. DAY
- 31 - FIFTH FRIDAY ART WALK - PAULS VALLEY ARTS COUNCIL

FEB

- 17 - PRESIDENTS DAY

MAR

- 9 - DAYLIGHT SAVINGS TIME BEGINS
- 17-21 - SPRING BREAK - PAULS VALLEY SCHOOLS
- 20 - EASTER

APR

- 11 - MOTHERS DAY
- 18 - GRADUATION - PAULS VALLEY HIGH SCHOOL
- 26 - MEMORIAL DAY
- 30 - FIFTH FRIDAY ART WALK - PAULS VALLEY ARTS COUNCIL

MAY

JUN

- 14 - OKIE NOODLING TOURNAMENT - CITY OF PAULS VALLEY
- 15 - FATHER'S DAY

JUL

- 4 - INDEPENDENCE DAY & FIREWORKS SHOW

AUG

- 29 - FIFTH FRIDAY ART WALK - PAULS VALLEY ARTS COUNCIL

SEP

- 1 - LABOR DAY
- 28 - BRICKFEST / POLICE OFFICERS CAR SHOW - CITY OF PAULS VALLEY
- TBD - HOMECOMING - PAULS VALLEY HIGH SCHOOL

OCT

- 2 - CHAMBER BANQUET - PAULS VALLEY CHAMBER OF COMMERCE
- 9-12 - RED BRICK ROAD FILM FESTIVAL - WASHITA RIVER FILM SOCIETY
- 31 - HALLOWEEN
- 31 - BOO ON THE BRICKS - PAULS VALLEY CHAMBER OF COMMERCE
- 31 - FIFTH FRIDAY ART WALK - PAULS VALLEY ARTS COUNCIL
- TBD - FALL BREAK - PAULS VALLEY SCHOOLS

NOV

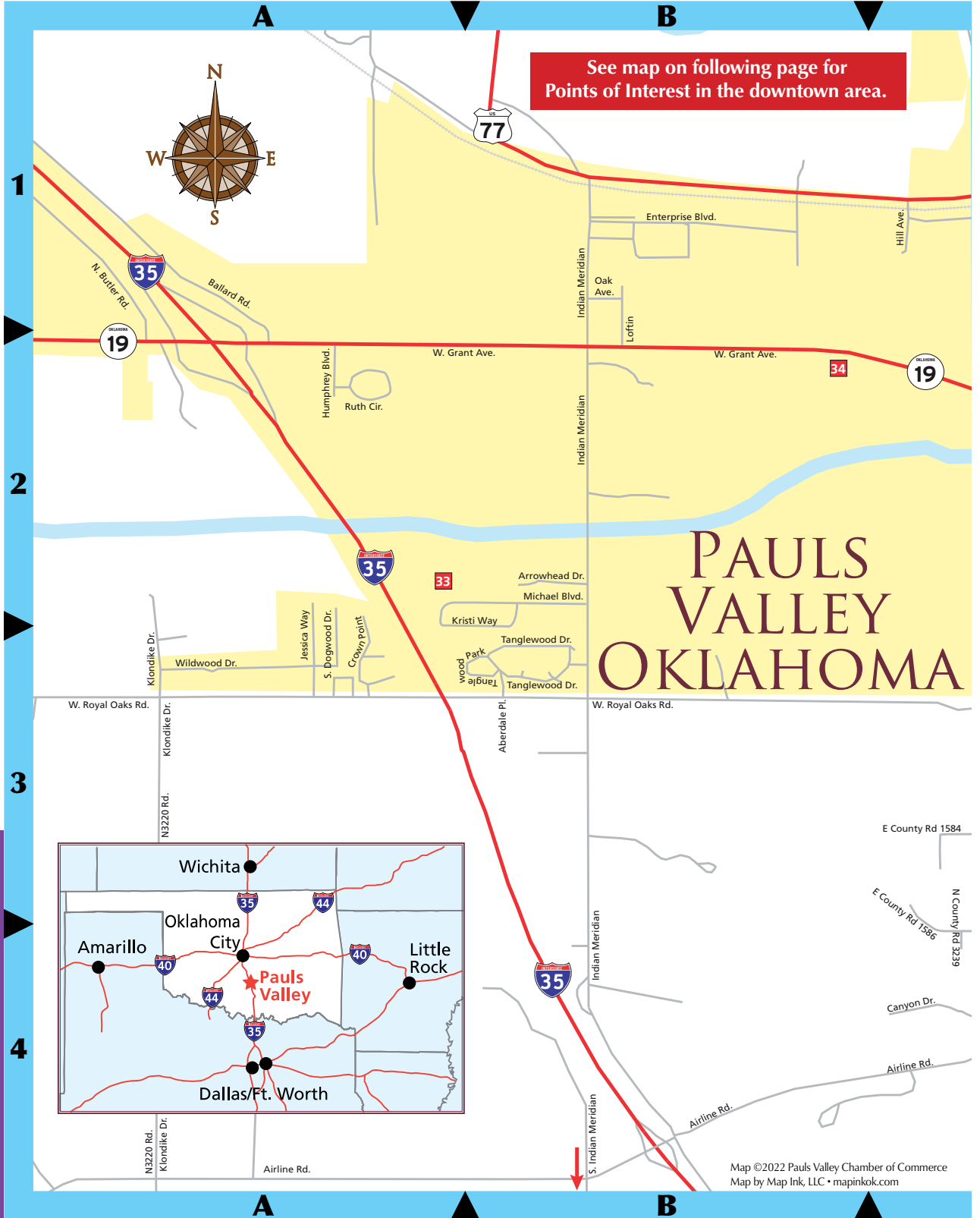
- 2 - DAYLIGHT SAVINGS TIME ENDS
- 11 - VETERANS DAY
- 27 - THANKSGIVING
- 29 - SMALL BUSINESS SATURDAY

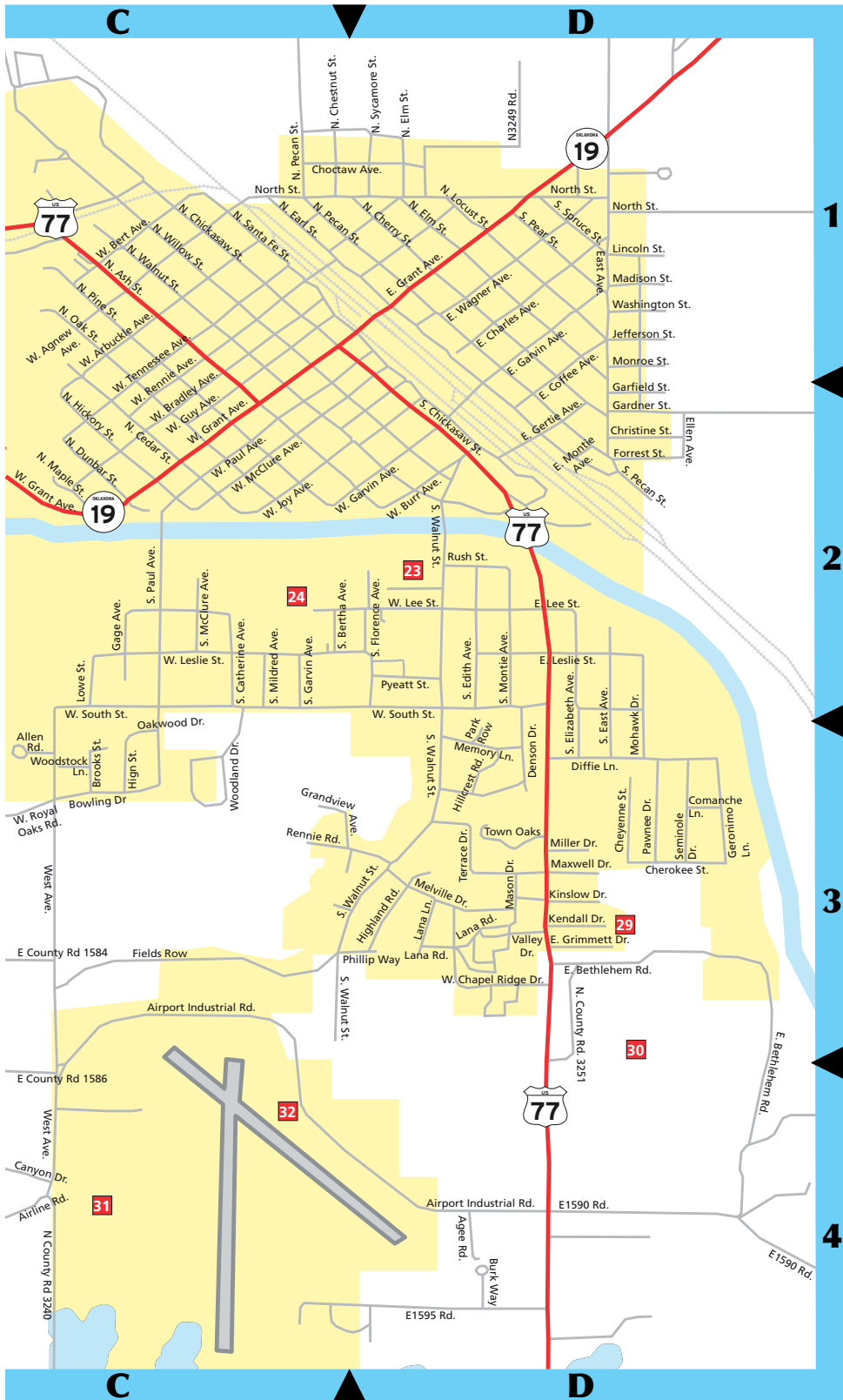
DEC

- 1 - CHRISTMAS PARADE OF LIGHTS
- 1 - PV FIRE DEPARTMENT CHILI SUPPER - CITY OF PAULS VALLEY
- 25 - CHRISTMAS
- 31 - NEW YEAR'S EVE

1ST & 3RD
TUESDAYS
7 PM

MASONS MEETING - MASONIC LODGE, 100 MASON AVE.





1

2

3

4

PAULS VALLEY MAP

STREET INDEX

A-B

Aberdale Pl (B3)
Agee Rd (D4)
W. Agnew Ave (C1)
Airline Rd (A4,BC-4)
Airport Industrial Rd (C3,D4)
Allen Rd (C3)
W. Arbuckle Ave (C1)
Arrowhead Dr (B2)
N. Ash St (C1-2)
Ballard Rd (A1)
Bert Ave (C1)
S. Bertha Ave (C2)
E. Bethlehem Rd (D3,4)
Bowling Dr (C3)
W. Bradley Ave (C1,2)
Brooks St (C3)
Burk Way (D4)
W. Burr Ave (D2)
N. Butler Rd (A1)

C-D

Canyon Dr (C4)
S. Catherine Ave (C2)
N. Cedar St (C2)
W. Chapel Ridge Dr (D3)
E. Charles Ave (D1)
Cherokee St (D3)
N. Cherry St (D1)
N. Chestnut St (C1)
Cheyenne St (D3)
N. Chickasaw St (C1)
S. Chickasaw St (D2)
Christine St (D2)
Choctaw Ave (C,D1)
E. Coffee Ave (D1,2)
Comanche Ln (D3)
E. County Rd 1584 (C3)
E. County Rd 1586 (C3)
E. County Rd 1590 (D4)
E. County Rd 1595 (D4)
N. County Rd 3220 (A3,4)
N. County Rd 3239 (C3)
N. County Rd 3240 (C4)
N. County Rd 3249 (D1)
N. County Rd 3251 (D3,4)
Crown Point (A3)
Denson Dr (D3)
Diffie Ln (D3)
S. Dogwood Dr (A3)
N. Dunbar St (C2)

E-F

N. & S. Earl St (C1,D2)
S. East Ave (D1-3)
S. Edith Ave (D2)
S. Elizabeth Ave (D2,3)
Ellen Ave (D2)
N. & S. Elm St (D1)
Enterprise Blvd (B1)
Fields Row (C3)
S. Florence Ave (D2)
Forrest St (D2)

G-H

Gage Ave (C2)
Gardner St (D2)
Garfield St (D2)
E. Garvin Ave (D1)
W. & S. Garvin Ave (D2)
Geronimo Ln (D3)
E. Gertie Ave (D2)
Grandview Ave (D3)
Grant Ave (A-D1-2)
E. Grimmett Dr (D3)
W. Guy Ave (C2)
N. Hickory St (C2)
High St (C3)
Highland Rd (D3)
Hill Ave (C1)
Hillcrest Rd (D3)
Humphrey Blvd (A2)

I-J

Indian Meridian (B1-4)
Jefferson St (D1)
Jessica Way (A3)
W. Joy Ave (C2)

K-L

Kendall Dr (D3)
Kinslow Dr (D3)
Klondike Dr (A3,4)
Lana Ln (D3)
Lana Rd (D3)
E. & W. Lee St (D2)
W. Leslie St (C,D2)
Lincoln St (D1)
N. & S. Locust St (D1)
Loftin (B1)
Lowe St (C2)

M-N

Madison St (D1)
Mason Dr (D2)

Maxwell Dr (D3)
W. McClure Ave (C2)
S. McClure Ave (C2)
Melville Dr (D3)
Memory Ln (D3)
S. Mildred Ave (C2)
Miller Dr. (D3)
Mohawk Dr (D2,3)
Monroe St (D1)
E. Montie Ave (D2)
S. Montie Ave (D2)
North St (C,D1)

O-P

Oak Ave (B1)
N. Oak St (C1-2)
Oakwood Dr (C3)
Park Row (D3)
W. & E. Paul Ave (C2)
S. Paul Ave (C2)
Pawnee Dr (D3)
S. Pear St (D1)
N. Pecan St (C1)
S. Pecan St (D2)
Phillip Way (D3)
N. Pine St (C1-2)
Pyeatt St (D2)

R-S

W. Rennie Ave (C,D1)
Rennie Rd (C3)
W. Royal Oaks Rd (A-C3)
Rush St (D2)
Ruth Cir (A2)
N. Santa Fe St (C1,D2)
Seminole Dr (D3)
W. South St (C,D3)
S. Spruce St (D1)
N. Sycamore St (D1)

T-W

Tanglewood Dr (B3)
Tanglewood Park (B3)
W. Tennessee Ave (C1)
Terrace Dr (D3)
Town Oaks (D3)
Valley Dr (D3)
E. Wagner Ave (D1)
N. Walnut St (C1)
S. Walnut St (D2,3)
Washington St (D1)
West Ave (C3,4)
Wildwood Dr (A3)
N. & S. Willow St (C1,D2)
Woodland Dr (C3)
Woodstock Ln (C3)

POINTS OF INTEREST



See map on previous pages for Points of Interest outside the downtown area.

- 1 Pauls Valley Chamber of Commerce
- 2 City Hall
- 3 Santa Fe Depot Museum and Park
- 4 The Vault Art Space & Gathering Place
- 5 Toy & Action Figure Museum
- 6 Garvin County Courthouse
- 7 Pauls Valley Junior High School
- 8 Nora Sparks Warren Library
- 9 Pauls Valley Schools Administration Office
- 10 U.S. Post Office
- 11 Pauls Valley Democrat Newspaper
- 12 Pauls Valley Arts & Cultural Center
- 13 Wacker Park
- 14 Donald W. Reynolds Recreation Center
- 15 Pauls Valley Water Park
- 16 Garvin County Fairgrounds
- 17 Pauls Valley Football Field
- 18 Paws Valley Dog Park
- 19 Rotary Club Rose Garden

- 20 Samaritans Food Pantry
- 21 Pauls Valley Intermediate School
- 22 Pauls Valley Recycling Center
- 23 Old Pauls Valley Cemetery
- 24 Washita Valley Nature Park
- 25 Pauls Valley High School
- 26 Bosa Banquet Center
- 27 Bosa Aquatic Center
- 28 Lou Hall Park

(See large map for the following)

- 29 Bethlehem Cemetery
- 30 Mt. Olivet Cemetery
- 31 Pauls Valley Municipal Golf Course
- 32 Pauls Valley Municipal Airport
- 33 Baseball & Soccer Fields
- 34 Pauls Valley Elementary School

INDEX OF ADVERTISERS

ABBOTT HOUSE CHILD ADVOCACY CENTER	COVER
ABIDING HOME HEALTH	4
AMCOR FLEXIBLES NORTH AMERICA	2
CITY OF PAULS VALLEY	16, 18
CONTINENTAL CREDIT	COVER
DONALD W. REYNOLDS RECREATION CENTER	18
EL TAPATIO RESTAURANT	42, COVER
EZ GREEN LLC	52
FIRST UNITED BANK	4
GRANT & KATIE JOHNSON CPA	4
INSURANCE ONE	4
IRON WOLF COFFEE HOUSE	COVER
JET STREAM/WASHITA CASINOS	1
MERCY CLINIC PRIMARY CARE & GENERAL SURGERY	COVER
MID-AMERICA TECHNOLOGY CENTER	12
MOORE SONIC GROUP	10
MURRAY STATE COLLEGE	10
O'NEAL'S JEWELERS	10
PAINE BUSINESS MACHINES	10
PAULS VALLEY NATIONAL BANK	COVER
PHYSICAL THERAPY CENTRAL	4
SETH WADLEY AUTO GROUP	COVER
SOONER HOME FURNISHINGS	4
TRADITIONS HEALTH	52
WALMART DISTRIBUTION CENTER	2
WASHITA RIVER FILM SOCIETY	4
WASHITA VALLEY LIVING CENTER	10
WHITEBEAD SCHOOL	12

To be included in this Guide next year, please contact the Pauls Valley Chamber of Commerce.



Weed Control that works Commercial and Residential

405-207-1451



TRADITIONS HEALTH

511 E. Main Street
Davis, Oklahoma 73030
580-369-5531

519 W. Delaware Street
Purcell, Oklahoma 73080
405-527-0027

traditionshealth.com



SAMARITANS FOOD PANTRY

A non-profit organization distributing food to those in need in Pauls Valley and beyond

Tuesdays & Thursdays @ 1000 N. Ash, Pauls Valley



Always accepting volunteer help & food/funding donations

(405) 207-9077

Oklahoma's 
TRUCK KING



**OIL CHANGES
FOR LIFE**

SW **SETH WADLEY**
AUTO FAMILY



**ENGINES
FOR LIFE**

SETHWADLEY.COM PAULS VALLEY • ADA • PERRY



LINCOLN



GMC



DODGE

Jeep



RAM



Abbott House
 CHILD ADVOCACY CENTER
 GARVIN COUNTY

To learn more about ways you can be involved, visit our website or check us out on social media!

 www.abbott-house.org

 MACHNorman

 @abbotthousenorman

DHS HOTLINE
 It's not your job to investigate,
 It's your job to report.
1-800-522-3511



CONTINENTAL CREDIT

Bonnie Seymour
 Manager

Installment LOANS
 We Do Taxes

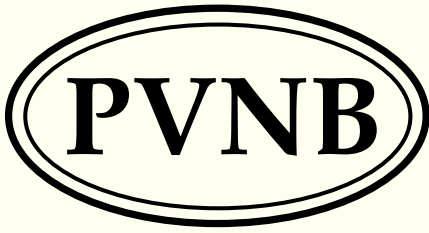
301 S Chickasaw St
 Pauls Valley, OK 73075-4217
 Phone (405) 238-3614 • Fax (405) 238-6770
www.securityfinance.com



**PAULS VALLEY'S
 NEWEST RESTAURANT!**

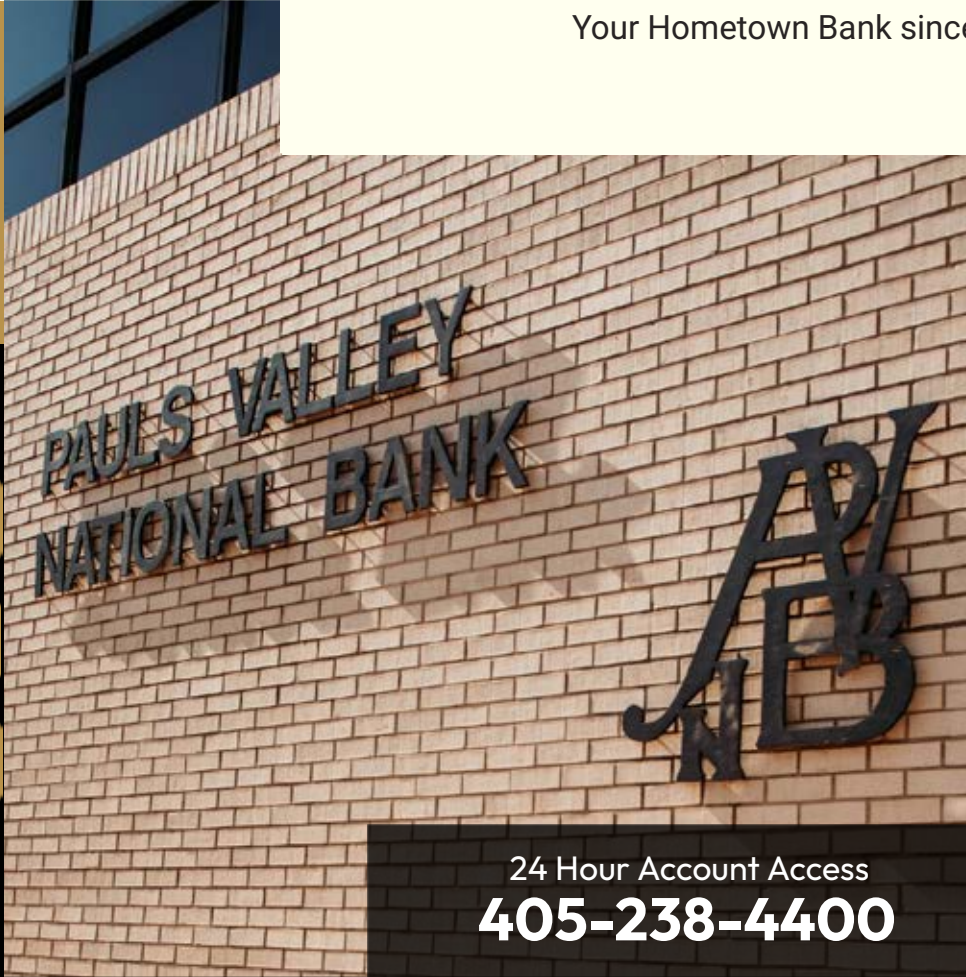
2609 W. Grant Ave.
 (405) 983-9606
eltapatioOK.com

- Serving Lunch & Dinner
- Fresh Ingredients
- Variety of Dishes
- Friendly Bar
- Event Catering



The PAULS VALLEY NATIONAL BANK
 DAVIS ♦ PAULS VALLEY ♦ ELMORE CITY

Your Hometown Bank since 1905



 CONTACT
US

405-238-9321
Pauls Valley

580-788-2912
Elmore City

580-369-2325
Davis

24 Hour Account Access
405-238-4400

5 Convenient Locations

- 101 W. Paul Ave. - Pauls Valley
- 101 N. Indian Meridian Rd. - Pauls Valley
- 217 W. Paul Ave. - Pauls Valley
- 101 S. Main - Elmore City
- 301 E. Main - Davis

Member **FDIC**



WWW.PVNB.COM

 @PVNational