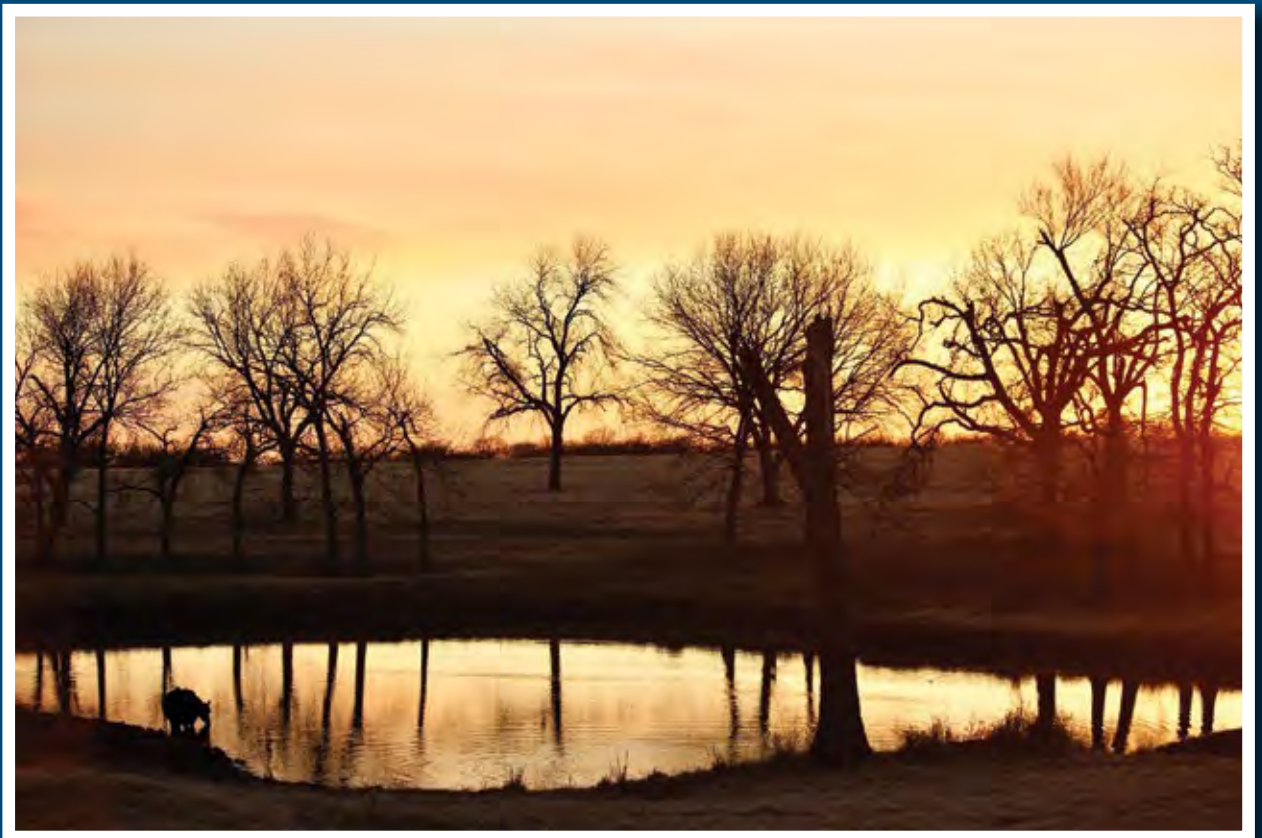


PAULS VALLEY

CHAMBER OF COMMERCE

COMMUNITY GUIDE & MEMBER DIRECTORY

2024





FOOD



FUN



FUEL



I-35 EXIT 70

2001 W. AIRLINE RD | PAULS VALLEY, OK
JETSTREAMCASINO.COM | (405) 331-2500



**WASHITA
CASINO.**

I-35 EXIT 79

EAST ON HIGHWAY 145 | PAOLI, OK
WASHITACASINO.COM | (405) 484-7778



OPEN DAILY

Snacks • Beer
Tobacco Store



OPEN 24/7

Fuel • Hot Food To-Go
Smoke Shop • Beer Cave

GAMBLE RESPONSIBLY. 1.800.522.4700

A PUBLICATION OF

PAULS VALLEY

CHAMBER OF COMMERCE

112 E. PAUL AVENUE

P.O. BOX 638

PAULS VALLEY, OK 73075

(405) 238-6491

FAX: (405) 238-2335

www.PaulsValleyChamber.com

info@PaulsValleyChamber.com

VISION

Advancing the commercial, industrial, educational, civic, general business, and cultural climate of Pauls Valley.

MISSION

To enhance economic growth of Pauls Valley and to serve our members by focusing on education, promotion and development of the business community.

To be included in this Guide next year, please contact the Pauls Valley Chamber of Commerce.

NANCY RUNGE, PUBLISHER

STEVE FREEMAN, EDITOR

DESIGNED & PRINTED BY



401 N Third | Durant, OK 74701

580.924.2271

pricesprinting.com

CONTENTS

CHAMBER OF COMMERCE

About	3
Board of Directors	5
History of the Chamber	6

PAULS VALLEY

About the Cover Art	7
History of Pauls Valley	8
In Memory of Lou Hall	9
Living Here	10
Taxes & Employment	11
Education	13
Transportation & Agriculture	15
Arts & Culture	16
Activities	17
Recreation	19
Outdoor Fun	21

COMMUNITY CONTACTS

Emergency, City & Services	23-25
Government - County, Tribal	26
Government - Federal, State	27
Churches	28
Community Organizations	29

MEMBER LIST 30-31

MEMBER DIRECTORY 33-49

COMMUNITY CALENDAR 50-51

PAULS VALLEY MAP 52-55

INDEX OF ADVERTISERS 56

Eastridge

COUNTRY ESTATES

www.eastridge-estates.com



If you're dreaming of the perfect location for your new custom dream home, look no further than Eastridge Country Estates. Eastridge is a covenant protected subdivision to assure the distinctly unique lifestyle and maintain the beauty of your surroundings. Eastridge home sites are located in Paoli, Oklahoma, less than an hour south of Oklahoma City. This offers you the best of quaint country living while you remain close enough to keep you connected to city conveniences. Families who value a friendly small town atmosphere with a quality school system—as well as retirees who desire a relaxing retreat in the country—will both appreciate this distinguished community.

Featured by
Sharon Agee

Humphrey Realty
405.238.7393
www.humphreyrealty.com



**1 GREAT
OPTION!**



On one 2.85 acre parcel, build your home with this upscale 50x50 shop on site. Totally insulated, central heat/air, septic and water. Paved parking. Priced for \$375,000.

A WORD FROM THE CHAMBER PRESIDENT



Nancy Runge
Chamber President

Welcome to Pauls Valley. I hope this community guide helps you navigate our great community. We have made some big changes at the Chamber this past year. We have new networking events called Business after Hours and Lunch & Learn. We started a new Life Planning Series, which is an expo with vendors who provide services for life's issues like Senior Living, Wedding Planning, Starting a Family and Continuing Education. Everyone is invited to these planning expos. Walk around and visit each booth. Each event will have a wealth of information.

If you are new to the area or just visiting, we are glad to have you in Pauls Valley. I hope you experience the warmth and friendliness that I have come to appreciate in our charming small town. If you get a chance, please try to attend some of our wonderful events, like the Okie Noodling Tournament, Brickfest, the Fifth Friday Art Walk and the Red Brick Road Film Festival. You might also try to catch a performance of the Garvin County Choral Society & Sinfonietta. You will soon discover what makes Pauls Valley such a special place.

Our Chamber office is located at 112 E. Paul Ave. in downtown Pauls Valley. Please call or stop by. We would be pleased to help you discover the hidden treasures Pauls Valley has to offer.

CONTACT US:

112 E. Paul Ave.
Mail: P.O. Box 638
Pauls Valley, OK 73075

Phone: (405) 238-6491
Fax: (405) 238-2335
www.PaulsValleyChamber.com

Email: info@PaulsValleyChamber.com

MEMBER BENEFITS

EXPOSURE

- Submission of new member news for publication in *Pauls Valley Democrat* and *Garvin County News Star*
- Member referrals to inquiring general public and other businesses
- Business listing on www.paulsvalleychamber.com
- Facebook postings and promotions periodically throughout year
- Local business brochure rack

NETWORKING

- Annual Chamber Celebration Banquet
- Chamber-sponsored events
- Monthly board meeting held 3rd Tuesday at 12 noon
- Special events committee participation
- Legislative Briefings
- Pie Day at State Capitol

DISCOUNTS

- Advertising discounts with local media

CHAMBER NEWS

- Monthly E-newsletters
- Member Briefs

ANNUAL COMMUNITY GUIDE & MEMBER DIRECTORY

- Free listing of your business or organization
- Advertising opportunities

LEADERSHIP OPPORTUNITIES

- Board of Directors and Events, Legislative and Membership Committees



Chamber Issues Forum with
Congressman Tom Cole



The most important link
In Walmart's Supply Chain is **YOU!**

Joining Walmart's Supply Chain means investing in your future, making an impact in your community, innovating for a better tomorrow, and creating a thriving career to support life outside of work. We need talented individuals like you — to help us **plan, manage, execute, analyze, and sustain the supply chains of the future**



Apply at: careers.walmart.com



Walmart DC 6042


Grocery Distribution Center # 6042
20634 Indian Meridian Rd., Pauls Valley, OK 73075
405-207-5000

PAULS VALLEY PUBLIC SCHOOLS



- 2023 National Blue Ribbon School
- Newly Constructed Elementary School
- 16 Athletic Teams
- Concurrent/AP Classes
- 6 Band Sweepstakes Awards
- Opportunities for Every Child




Download the PVPS App:
EVERYTHING PAULS VALLEY
IN YOUR POCKET!

301 N. Chickasaw
PO Box 780
Pauls Valley, Oklahoma 73075
Phone: (405) 238-6453

Pauls Valley Public Schools



High School: (405) 238-6497
Junior High: (405) 238-1239
Intermediate: (405) 238-7336
Elementary: (405) 238-2312

CHAMBER BOARD OF DIRECTORS

Our volunteer board of directors governs the Chamber, and a professional staff led by the Chamber President runs its day-to-day operations. Ultimately, the effectiveness of the Chamber as an organization is entirely dependent upon the support and involvement of our membership.

EXECUTIVE BOARD

Chair Jan Moran AT&T	Chair Elect	Treasurer Katie Johnson Grant & Katie Johnson, CPA	Past Chair Grace Farnan First United Bank	Appointee Joe Don Looney Amcor	Appointee Travis John TriVan Roofing	Appointee Amy Brown Sooner Home Furnishings
-----------------------------------	--------------------	--	--	---	---	---

VOTING DIRECTORS (EXPIRING JUNE 2024)

Travis John, TriVan Roofing
Amy Brown, Sooner Home Furnishings
Micaela Halverson, Halverson Ranch
Jason Selman, L.A. Jacobson
Connie Upton, Abiding Home Health
Tawni Vickers, City of Pauls Valley
Todd Thomsen, OG&E

VOTING DIRECTORS (EXPIRING JUNE 2025)

Joe Don Looney, Amcor Flexibles North America
Lu Ann Milligan, Pauls Valley National Bank
Jan Moran, AT&T
Grace Farnan, First United Bank
Pamela Popejoy, Bloomin' Crazy
Allie Crow, Physical Therapy Central
Tamara Hicks, Mid-America Technology Center
Tyler Justice, Reavis Rexall Drugstore

NANCY RUNGE

President



Legacy Drug



Ribbon Cutting at Seth Wadley Chevrolet

HISTORY OF THE CHAMBER OF COMMERCE 1921-2024

In 2021, the Pauls Valley Chamber celebrated its 100th anniversary and received an official commendation from Oklahoma Gov. Kevin Stitt praising the Chamber as having “successfully enhanced the economic growth of the town, becoming one of the leading business resources in Garvin County.”

The origins go back even further than 1921, however. In 1898, a local Business Men’s Club was organized and was active for a time, but had become dormant. In about 1905, when Pauls Valley was still part of Indian Territory (before statehood), two local newspapers, The Sentinel and the Enterprise, both wrote about the need for reviving the club. In his support of the effort, O.S. Wilson, editor of the Sentinel, wrote, “Pauls Valley is in a progressive county where for a town to stay at the head of the procession requires organization on the part of the citizens.”

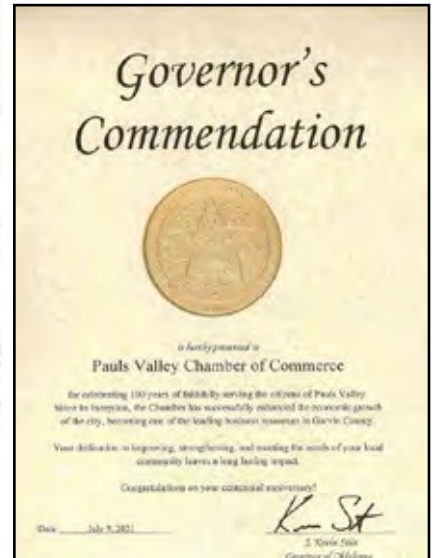
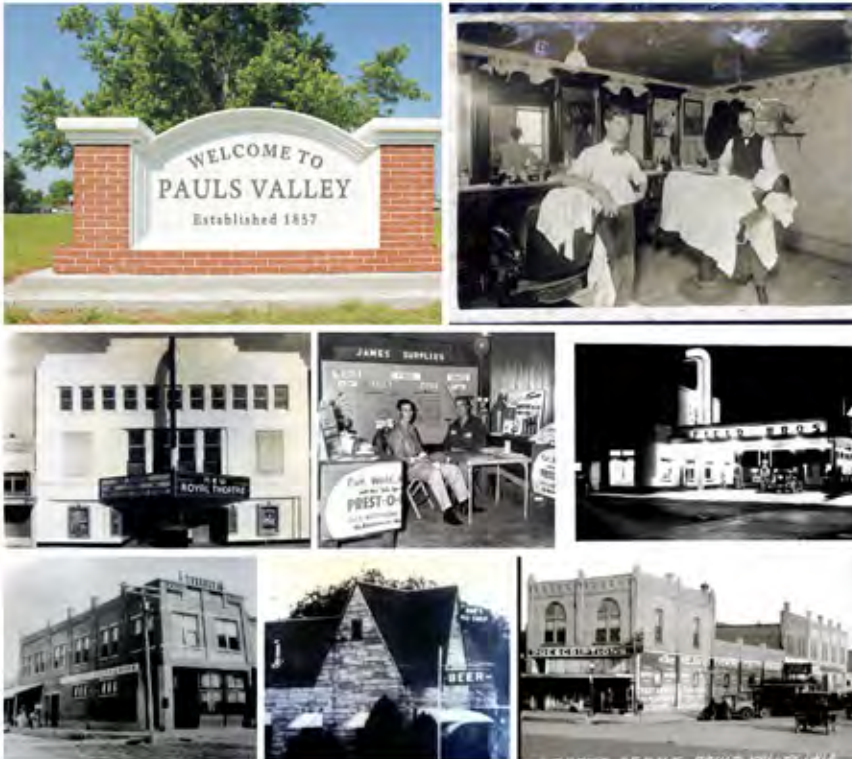
The businessmen started the organization on May 11, 1905. A total of 125 people signed up. This was the forerunner of today’s Chamber of Commerce.

Fast-forward some 16 years. The still young but growing town bolstered its business organization again—perhaps following a trend happening nationally with many cities starting Chambers of Commerce. On Dec. 24, 1921, several business leaders incorporated the Pauls Valley Chamber of Commerce. The organization has been a strong and positive force for the economic wellbeing of the town ever since.

Today, the Chamber operates out of a brick building built for the Pauls Valley Masonic Lodge in 1906. The building is said to be the oldest structure of continuous use in downtown. The Masons donated the building to the Chamber in the late 1970s.

For more Chamber history, visit PaulsValleyChamber.com.

(Adrienne Grimmett of the Pauls Valley Historical Society contributed to this article.)



Formal commendation from Oklahoma Gov. Kevin Stitt, marking the 100th anniversary of the Pauls Valley Chamber of Commerce in 2021

DESCRIPTION OF COVER ART

The photo on the front cover – titled “A Sunset Drink” – highlights the end of a long day’s work, enjoying the serenity of rural life and a beautiful Oklahoma sunset.

The photographer, Amanda Upton, is a sixth generation Oklahoma native who grew up on a small cattle ranch in Southern Oklahoma. She spent her formative years outside surrounded by nature. Amanda’s passion for photography began by following her twin sister around her softball tournaments throughout their childhood and early adult years. She has enjoyed documenting her various out-of-state travels, but today you can find her back on the family ranch capturing everyday life for many rural Oklahomans. You can follow her work on Instagram @amandauphton. photography.

When Amanda steps away from the camera, she works with farmers and ranchers as an Assistant Vice President at Oklahoma AgCredit in Pauls Valley where she serves Garvin County and the surrounding area. A member of the national Farm Credit System, Oklahoma AgCredit supports rural Oklahoma with reliable, consistent credit. Oklahoma AgCredit supports rural communities and agriculture by



Amanda Upton

PAULS VALLEY



providing loans for rural land, livestock, equipment, and operating costs to farmers, ranchers, and rural businesses across 60 counties. Just as Farm Credit has kept its commitment to American agriculture for more than 100 years, Oklahoma AgCredit remains committed to rural Oklahoma. Whether you are purchasing a new farm or ranch, expanding your operation, or looking to refinance, Oklahoma AgCredit has your financial solution. Oklahoma AgCredit specializes in agriculture and knows the cyclical nature of the business.

Oklahoma
AgCredit

has partnered with AgDirect to deliver simple, fast, and flexible ag equipment financing, and with Rural 1st, the leader in rural lending, to provide you the best options for your rural home financing needs. Contact the Pauls Valley office at (405) 238-5573 and find us on social media @okagcredit. Oklahoma AgCredit: member of the Farm Credit System. NMLS ID 809962. Equal Housing Lender. Equal Credit Opportunity Lender.



HISTORY OF PAULS VALLEY

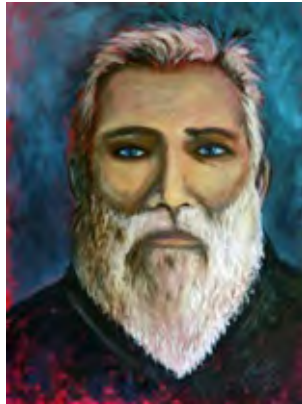
1857 - 2024



As a young man, Smith Paul—Pauls Valley’s namesake—left his home near New Bern, NC, seeking a new life for himself. He found a home with a Chickasaw tribe in Mississippi. Paul moved with the Chickasaws when the government ordered them to move to Indian Territory in what is now Oklahoma in 1838. They settled around Boggy Depot, today a ghost town southwest of present-day Atoka, OK.

In 1846, Paul married a Chickasaw woman named Ela Teecha (or Ellen in English). Ellen, a widow, had two children and together they had three more. In 1857, the family moved to the fertile Washita River Valley that straddles the river that bisects the town today. More Indians and inter-married whites began to come to the area being called “Smith Paul’s Valley.” A stagecoach stop, a general store and some log houses stood in an area about one mile south of the current-day Santa Fe Depot.

The Washita Valley became a major producer and trade center for corn, cotton, beef and pork, as well as a crossroads for travel in the area. Army forts located nearby were major consumers of local products. In 1871, one of the earliest U.S. Post Offices in Indian Territory was established here. In 1887,



Portraits of Smith Paul and his wife Elateecha by artist Susie Agee are on display in the Chamber Board Room

the Chickasaw Enterprise, one of the earliest newspapers in the region, announced the coming of the Santa Fe Railroad, which contributed to the town’s growth and prosperity.

Brick building construction started in 1893, and a Federal Court House was built in 1895. The first public white school in Indian Territory was established here in 1899. In 1906, Pauls Valley became the county seat of the new Garvin County, named after Samuel Garvin, a local Chickasaw rancher, merchant and banker. Oklahoma statehood came in 1907. The brick streets still used today were added in 1909.

The downtown area is listed on the National Register of Historic Places as a historic central business district.

(Adrienne Grimmitt of the Pauls Valley Historical Society contributed to this article.)



Discover the rich heritage of Pauls Valley at the Santa Fe Depot Museum and Plaza. This unique museum is the home of a variety of artifacts from Pauls Valley’s founder, Smith Paul. It features an authentic steam engine and caboose, recognizing the city’s railroad history. For hours and information, call (405) 238-2244.

IN MEMORY OF LOU HALL



Pauls Valley lost a real treasure on April 3, 2023, with the passing of Lou Lindsey Hall. She contributed so much to Pauls Valley through her involvement in civic, community and Chamber events. She was a founding leader of Samaritans Food Pantry and active in numerous organizations over the years since her birth here in 1936. These include Pauls Valley General Hospital (which her father helped to found), the city's Beautification Committee, First Presbyterian Church, Garvin County Community Living Center, the Toy & Action Figure Museum and Pauls Valley Animal Welfare Society (PAWS).

Lou volunteered countless hours of work. She always showed up and she always had a smile. She was often seen with her little dog picking

up litter in Wacker Park and downtown. Additionally, she was a regular participant in the city and Chamber citywide clean-up event Pockets of Progress.

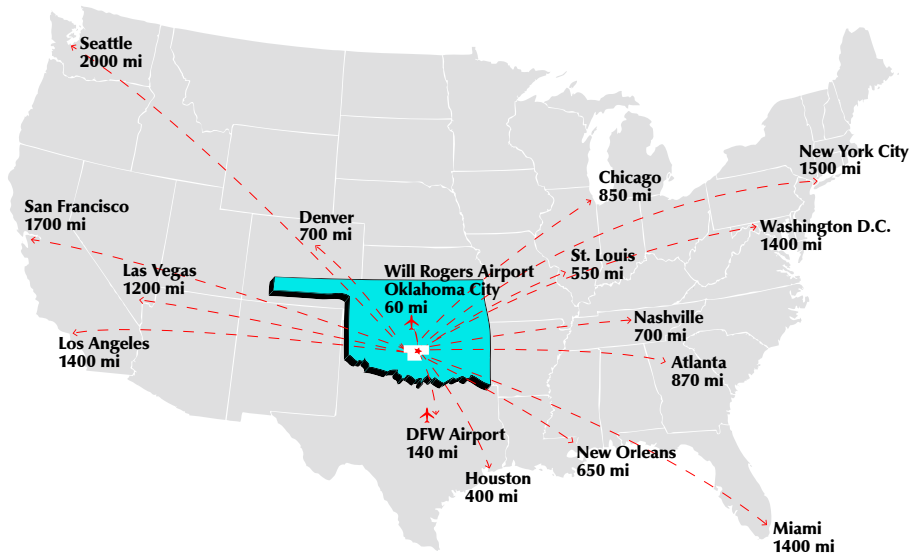
At her funeral, the Rev. Chas Gowing, her pastor at First Presbyterian Church, said, "Today, in honor of Lou, please... pick up some litter, eat your vegetables, do your breast self-exam, do something nice for someone, contact a friend you've lost touch with, spread love, express your gratitude, praise the Lord!"

A beloved friend to many and proud supporter of Pauls Valley, Lou was one of the first women to receive the Pauls Valley Chamber's Citizen of the Year award in 1999. She also served on the Chamber Board of Directors. In 2020, she accepted the Corporate Citizen of the year award on behalf of the Samaritans. She always showed up to help at Chamber and City events from baking brownies for the Banquet to helping at the Okie Noodling Tournament. She was an individual member of the Chamber for over 20 years.



LIVING IN PAULS VALLEY

PAULS VALLEY



LOCATION

Pauls Valley, founded in 1857, is the county seat of Garvin County, Oklahoma. It is located 55 miles south of Oklahoma City and bounded on the west by Interstate 35 with the downtown section surrounding the intersection of U.S. Highway 77 and State Highway 19. Pauls Valley has a current population of 5,967. Garvin County's current population is 25,949.

PAULS VALLEY POPULATION BY SEX/AGE

Male: 49%
 Female: 51%
 Total: 5,967

Under 20: 27.7%
 20-29: 13.3%
 30-39: 12%
 40-49: 12.2%
 50-59: 11.3%
 60-69: 11%
 70-79: 7.4%
 80 plus: 4.9%
 Median Age: 36.5

CLIMATE

Average winter temperature (Jan.): 27° to 52°F
 Average summer temperature (July): 72.3° to 93.4°F
 Average rainfall: 33.92 inches

AVERAGE DAILY TRAFFIC COUNT

I-35 near Hwy. 19: 34,000
 Hwy. 77/Hwy. 19 intersection: 7,300

HOUSING

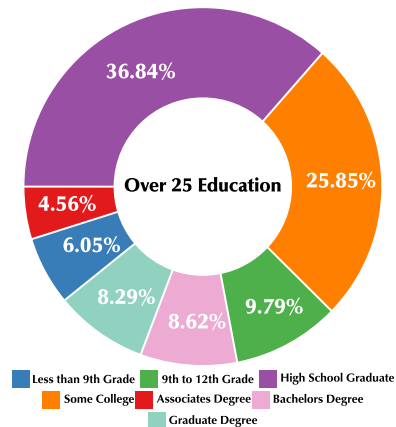
Number of Households - 2,389
 Owner - Occupied - 54.1%
 Renter - Occupied - 45.9%
 Median Household Income: \$43,525

MUNICIPAL SERVICES

Form of Government	Mayor/Council
Fire Department Personnel	11
Fire Insurance Classification	3/3Y
Police Department Personnel	15

EDUCATION

Elementary to Some High School: 18.4%
 High School Graduates: 37.5%
 Some College or Associate Degree: 26.3%
 Bachelor or Graduate Degrees: 17.8%



PAULS VALLEY TAXES & EMPLOYMENT

OCCUPATIONS IN PAULS VALLEY



MAJOR EMPLOYERS

Walmart Distribution Center	659
Seth Wadley Auto Group	225
Covercraft	185
Walmart Pauls Valley	185
Pauls Valley Public Schools	180
Amcor Flexibles North America	180
Garvin County Community Living Center	150
City of Pauls Valley	149
Garvin County	142
Sonic Drive-Ins	88
360 Broadband	88
Burford Group	65
Pauls Valley National Bank	57
Jet Stream Casino	40
Edward's Canvas Inc.	36
LA Jacobson, Inc.	32
Field's Pies	28
Ace Hardware	25
First United Bank	19
United Ag & Turf	17

JOBLESS RATE

5.9% (November 2022)

SALES TAX

State Tax Rate	4.50%
City Tax Rate	4.50%
County Tax Rate	0.75%

INCOME TAX

Personal Income Tax (state)	4.75% (max)
Corporate Income Tax (state)	4.00% (max)

MOTEL TAX

Hotel/Motel Tax Ordinance of 2001	5.00%
-----------------------------------	-------

GARVIN COUNTY

PERSONAL & REAL PROPERTY TAX (PER 1,000 ASSESSED VALUE)

Pauls Valley School District Mill Levy Rate	\$68.47
Garvin County Mill Levy Rate	\$16.95
Career Tech Levy Rate	\$11.25
Pauls Valley Ambulance	\$3.06
Total Mill Levy for PV School District	\$99.73
Real Property Assessment Rate	11%

JOIN OKLAHOMA'S FASTEST GROWING COLLEGE

54+

Degree Programs

14+

Certificate Programs

100+

Years of Academic Excellence

15+

Online Programs

\$10.1+ MILLION IN SCHOLARSHIPS AVAILABLE



MURRAY STATE COLLEGE

From Here, Go Anywhere!



SCAN NOW

APPLICATIONS ARE NOW OPEN



EDUCATION



PAULS VALLEY SCHOOL DISTRICT

ADMINISTRATION

Superintendent Adam McPhail (405) 238-6453

SCHOOLS

Pauls Valley Elementary School Kristi Herd, Principal
1650 W. Grant Ave. Students: 459
(405) 238-2312 Staff: 65

Pauls Valley Intermediate School Angela Green, Principal
301 West Burt Students: 291
(405) 238-7336 Staff: 36

Pauls Valley Junior High School Martha Graham, Principal
109 W. Guy Ave. Students: 344
(405) 238-1239 Staff: 35

Pauls Valley High School Kirk Moore, Principal
601 North St. Students: 334
(405) 238-6497 Staff: 38

BOARD OF EDUCATION

Joe Don Looney, President Richelle Humphrey
Jesse Alvarado, Vice President Aloysius Jackson
Katie Johnson

MORE INFORMATION

PaulsValleySchools.com



HIGHER EDUCATION OPPORTUNITIES

Mid-America Technology Center	17 mi
University of Oklahoma	Norman, 35 mi
East Central University	Ada, 35 mi
Mid-American Christian University	OKC, 54 mi
OKC Community College	OKC, 57 mi
Oklahoma Baptist University	Shawnee, 57 mi
Oklahoma City University	OKC, 60 mi
Rose State College	Midwest City, 62 mi
Oklahoma State University	OKC, 63 mi Stillwater, 112 mi
University of Central Oklahoma	Edmond, 72 mi
Cameron University	Lawton, 80 mi
Murray State College	Tishomingo, 84 mi
Southeastern OK State University	Durant, 97 mi



WHITEBEAD PUBLIC SCHOOL

ADMINISTRATION

Superintendent & Principal Shea Thompson
(405) 238-3021, Ext. 1001

BOARD OF EDUCATION

Everett Plummer, President Belinda Hunt
Sandy Arroyo

DESCRIPTION

Whitebead is a pre-kindergarten through 8th grade school. It is an "A" rated school by the State of Oklahoma and is recognized as a Blue Ribbon School.

STUDENTS

313

TEACHERS

28

MORE INFORMATION

Whitebead.net



MID-AMERICA TECHNOLOGY CENTER

Mid-America Technology Center (MATC) is a public career and technology education center in Wayne, OK, that serves Garvin and seven other counties. The district was formed in 1968, and its first classes started in 1971. As part of the Oklahoma Department of Career and Technology Education system, MATC offers 31 career programs and has an average enrollment of 1,000 full-time high school and adult students. Programs give students a foundation in careers such as automotive maintenance & repair, business office, broadband technician, carpentry, cosmetology, cyber security, EMT, graphic design, health care, HVAC repair & installation, manufacturing, plumbing, pre-engineering, welding, and many more. MATC also works closely to provide advanced learning for area schools. MATC's Short-Term Adult Training & Development has 5 coordinators, and 3 full-time trainers available to provide customized training. Our customized programs historically serve 12,000 - 15,000 professionals and adults per year. Additionally, our Leadership Mid-America program provides leadership training with a new class starting each September.

MORE INFORMATION

(572) 215-2060
or at matech.edu



www.matech.edu

Let Mid-America Technology Center Serve You

Business & Industry Services

- Agriculture Business Management
- Customized Industry Training
- Health Care Training
- Leadership Training
- Safety Training
- Small Business Management

Short-Term & Evening

- Professional Development Classes
- Personal Enrichment Classes

31 Full-Time Programs (daytime)

- High School
- Adult Students

27438 State Hwy 59 | P. O. Box H | Wayne, OK 73095 | 572-215-2060



HOURS OF OPERATION:
(Fall & Winter)
8:00 am-Sunset
(Spring & Summer)
7:00 am - Sunset

Pauls Valley Municipal Golf Course

A PEACEFUL PLACE TO ESCAPE, RELAX AND HAVE FUN!

DRIVING RANGE / PUTTING GREEN / CHIPPING GREEN / PRO SHOP / SNACK BAR / CLUB RENTAL

**SCRAMBLES YEAR ROUND:
THURSDAY NIGHTS / DURING THE SPRING AND SUMMER
SUNDAY AFTERNOONS / DURING THE FALL AND WINTER**

19997 N. COUNTY ROAD 3240 / P.O. BOX 778 / 405-238-7462 / PAULSVALLEY.COM / [f @pvmgc](https://www.facebook.com/pvmgc)

TRANSPORTATION

DELTA PUBLIC TRANSIT

Delta provides public transportation services to Garvin County residents. This includes door-to-door transportation for doctor office visits and social, nutritional, entertainment, and other needs. Hours of operation are Monday through Friday, 8 a.m. to 5 p.m. The fee is \$2.50 for each in-town stop, with other charges for trips outside Pauls Valley. Call 866-THAT-BUS (842-8287).

PAULS VALLEY MUNICIPAL AIRPORT (405) 238-7338

430 Airport Road
Pauls Valley, OK 73075

Primary runway - 5,000 feet, concrete runway surface, LED lights, Avgas and Jet A fuels available, courtesy car and pilots lounge, Internet.

Airport Identifier: KPVJ Unicom 122.8 AWOS 118.67
Self Serve Fuel 24/7 Fuel Attendance 8 a.m. – 5 p.m.
Runway 17/35



HEARTLAND FLYER AMTRAK'S OKLAHOMA CITY TO FORT WORTH ROUTE

Santa Fe Depot & Plaza
1 Santa Fe Plaza (Hwy 19 at the BNSF tracks)
Pauls Valley, OK 73075

1-800-USA-RAIL (1-800-872-7245)
www.heartlandflyer.com

9:31 a.m. departure/8:05 p.m. return

PAULS VALLEY

AGRICULTURE

Garvin County lies in south central Oklahoma and is comprised of 533,120 acres of land, with 468,880 being fertile agricultural land. The county is 42 miles wide and 24 miles long. It is an extremely diversified agricultural area with a gross value of production of approximately \$152 million. More than \$42 million comes from crop production and \$105 million from livestock production.

Alfalfa and other hay crops rank third in the state with 85,000 acres harvested. Garvin County is known for the great quality alfalfa hay raised in the fertile Washita River bottom that extends for over 65 miles in the county. Much of this hay is exported to other states, particularly Texas. This large quantity of quality alfalfa has also been important to the dairy production in Oklahoma and Texas.

Wheat, corn, and soybeans are some of the other major crops sourced in Garvin County. Almost 18,000 acres of wheat, 5,600 acres of corn, and 5,700 acres of soybeans are harvested each year. Cattle production is another major commodity of Garvin County, with over 72,000 head of cattle and calves; 35,000 of those being beef cows. Rounding out the livestock numbers are 300 head of milk cows, 700 sheep, and 400 hogs.

This data from the USDA National Agricultural Statistics Service is provided by the Garvin County OSU Extension Service.



OSU Agriculture Office of Communications and Marketing

ARTS & CULTURE

PAULS VALLEY ARTS COUNCIL

PaulsValleyArtsCouncil.org



Formed in 2004, Pauls Valley Arts Council (PVAC) is dedicated to “Enriching the Community through the Arts,” its stated mission. Upcoming events for 2024 include Fifth Friday Art Walks set for March 29, May 31, August 30 and November 29; art classes every third Thursday of the month; the Garvin County Student Art Show February 23-24; and quilting classes hosted by Mid-America Technology Center. The third annual Red Brick Road Film Festival is held in October. The Pauls Valley Arts and Cultural Center, 220 W. Paul Ave., was officially opened in 2010 and is used by PVAC for meetings, art walks, art shows, workshops, small theatre productions and other art related projects. PVAC started its popular Fifth Friday Art Walks in 2017. Local galleries and

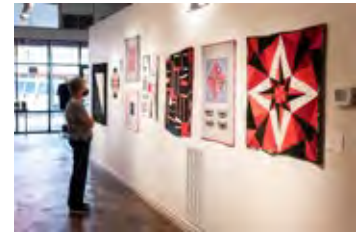
businesses display works by local and out-of-town artists. Artists provide live demonstrations and the downtown streets often have musical performers, face-painting artists, mimes and other amusements. Funding for PVAC activities is provided by the Pauls Valley Tourism Board, grants from the Oklahoma Arts Council, membership dues and donations.

THE VAULT

(405)343-6610

TheVaultPaulsValley.com

The Vault Art Space and Gathering Place is an art gallery and event venue at 111 E. Paul Ave. in historic downtown Pauls Valley. The Vault has been bringing people together through art since 2017. Gallery hours are 11 a.m. to 5 p.m. weekdays. Evening and weekend visits are available by appointment.



GARVIN COUNTY CHORAL SOCIETY & SINFONIETTA

GarvinCountySings.com

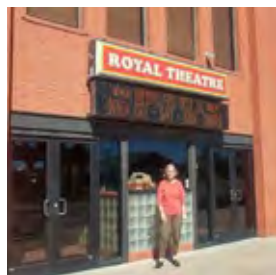


GCCSS brings classical and sacred music to south central Oklahoma by producing performances every spring and fall in Pauls Valley. Past performances are Handel’s Messiah, Gilbert & Sullivan’s Pirates of Penzance, Mozart’s Marriage of Figaro, Vivaldi’s Gloria and Menotti’s Amahl and the Night Visitors. GCCSS relies on generous gifts from individuals and businesses for its ongoing programming. Dr. Jack Bowman serves as Artistic Director.

WASHITA RIVER FILM SOCIETY

WashitaRiverFilmSociety.org

The Washita River Film Society aims to bring more entertainment to Southern Oklahoma through the art of cinema. Its annual Red Brick Road Film Festival provides a platform for diverse films ranging from Oklahoma-produced films to international favorites.



ROYAL THEATRE

(405) 238-6358

This popular entertainment venue offers current hit movies on two screens five nights a week with added matinee showtimes on weekends. A snack bar serves up movie popcorn, drinks and more. Located at Paul Avenue and Santa Fe Street, the theatre has been in the Brewer family for 100 years and has stayed ahead of historic trends like the start of the “talkies” and sound and video milestones. The main theatre includes a balcony and the second theatre is located in a next-door historic bank building which is said to be the oldest building in the city. Once a year, the theatre is part of the Red Brick Road Film Festival. Local moviegoers say it’s the best “two-hour vacation” around!

ACTIVITIES

TOY AND ACTION FIGURE MUSEUM

(405) 238-6300

ToyandActionFigureMuseum.com

The Toy and Action Figure Museum pays homage to those who have turned children's toys into works of art. Located in the heart of historic downtown Pauls Valley, the museum features over 13,000 action figures. The museum is also the home of the Oklahoma Cartoonists Collection, showcasing some of Oklahoma's most noted cartoonists. Located at 111 S. Chickasaw, the museum has varying hours so call before you go.



CITY OF PAULS VALLEY

Pauls Valley is home to unique festivals and special events. These include: **OKIE NOODLING TOURNAMENT** – On the third weekend in June, the event attracts catfish noodlers from all over the nation, as well as hundreds of fans of the time-honored Oklahoma tradition. **4TH OF JULY CELEBRATION** – This patriotic event includes the Pauls Valley Championship Watermelon Seed Spitting Contest and one of the state's largest manually lit fireworks displays set to inspiring music. **BRICKFEST** – Held the last Saturday in September, the event features street vendors, food trucks, the Pauls Valley Police Department's Car

Show, the Vintage in the Valley Bike Stunt Show and the Marching Band Competition, attracting area high schools. **CHRISTMAS** – The annual Parade of Lights kicks off the holiday season in the first week of December. It includes the light show at Santa Fe Depot Park, Storytime with Santa, and the Fire Department's Chili Supper.

PAULS VALLEY

NORA SPARKS WARREN LIBRARY

(450) 238-5188

PaulsValley.OKPLS.org

Nora Sparks Warren Library in Pauls Valley serves all of Garvin County. Children, youth and adults enjoy its collection of books and magazines, both print and digital; its classes and programs; and its various other services. Located at 210 N. Willow St., the library hours are 9 a.m. to 6 p.m. Monday through Thursday, 9 a.m. to 5 p.m. Friday and 9 a.m. to noon Saturday. For children, the library offers story times, summer reading programs, after school snack time and exercise classes. For adults, the library offers free Tai Chi, Yoga and SAIL classes, as well as occasional classes in healthy living, gardening, cooking and more. Visitors can tap into the facility's Wi-Fi internet connection for free.

A book lecture series sponsored by Oklahoma Humanities happens twice a year. To meet patrons' technology needs, the library has fax and scan services, notary public, eight public computers for use and four ABC Mouse learning computers for children. A meeting room is available to book for meetings. The library is also a Passport Acceptance Facility for the U.S. Department of State. Used books are available to purchase thanks to The Friends of the Library group and the library also manages the outside StoryWalk® program in Wacker Park which introduces kids to popular books as they roam the park.



Donald W. Reynolds Recreation Center



1005 N. Willow
405-238-1307

Open:

Mon-Fri 5:30 a.m. - 10 p.m.

Sat 7 a.m. - 10 p.m.

Sun 10 a.m. - 6 p.m.

Fitness Center • Indoor

Walking Track • Gym

Room Rentals • Youth Sports

PVyouthsports.com

Pauls Valley Water Park

Open From Memorial Day
thru Labor Day



Individual & Family Memberships Available
For more information on memberships visit

www.dwrrecpv.com

facebook.com/Donald-W-Reynolds-Recreation-Center



RECREATION

DONALD W. REYNOLDS RECREATION CENTER

(405) 238-1307

dwrrcpv.com

The Reynolds Recreation Center, located in Wacker Park, is a 36,540-square-foot facility offering a variety of amenities for all ages and interests. These include:

- Gymnasium
- Indoor running/walking track
- Weight/cardiovascular area, including free weights, selectorized machines and cardiovascular equipment for youth fitness, sport specific training and rehab/exercise
- Multi-purpose room for multiple program functions and community rentals
- Aerobic/dance area
- Babysitting area, indoor playground and birthday party room

The Pauls Valley Waterpark is a 5,600-square-foot multi-use pool that includes a diving board, lap lanes, a lazy river, flume slides and south central Oklahoma's only giant bowl slide. Families enjoy the zero-entry children's area with its water slides that are just their size, too.

The family aquatic facility is opened from Memorial Day to Labor Day.

An additional option for water fun is the Bosa Indoor Swimming Pool, located across the street from the Bosa Community Center at 207 Bosa Ave. The 25-meter pool is open year around for water fitness classes, arthritis aquatic programs, lap swimming, open family swim, lifeguard training, swimming lessons and private party rentals.



PAULS VALLEY



PAULS VALLEY MUNICIPAL GOLF COURSE

(405) 238-7462

With Bermuda greens and fairways, the 9-hole Pauls Valley Municipal Golf Course provides an enjoyable golfing experience. Located a half mile east of I-35 and Exit 70 South, the golf course has a pro shop, snack bar, driving range and practice area.



**Best
Western
PLUS**

The "Best" Choice

Free Hot Breakfast • Guest Laundry • Free WiFi
Truck Parking • 24-hour Guest Assistance
100% Non-Smoking • Conference Room



(405) 444-6035

bwpvgm@wnwhospitality.com

BestWestern.com

*We invite you to explore the unique Art Galleries
& Museums in Pauls Valley!*

**Santa Fe Depot
Museum**

204 S. Santa Fe
405-238-2244

**The Vault Art Space &
Gathering Space**

111 E. Paul Ave.
405-343-6610

**The Toy & Action
Figure Museum**

111 S. Chickasaw St.
405-238-6300

Stark Art Gallery
www.kevinstarkart.com

211 S. Chickasaw St.
by Appointment only



Pauls Valley Arts Council
www.paulsvalleyartscouncil.org
f @pvartscouncil



OUTDOOR FUN

WACKER PARK PAULS VALLEY PARKS & RECREATION (405) 238-1307

Wacker Park is a popular playground and recreational site for the young and young at heart alike. It includes playground equipment, tennis courts, baseball and football stadiums, a band shell, an off-leash dog park, rodeo grounds, the Garvin County fair facilities, pavilions a basketball gym, the Senior Citizen Center and more. The centerpiece is the Donald W. Reynolds Recreation Center and its adjacent outdoor water park and a popular scenic area is the Pauls Valley Rotary Club Rose Garden. Numerous festivals and events are held in the park each year.



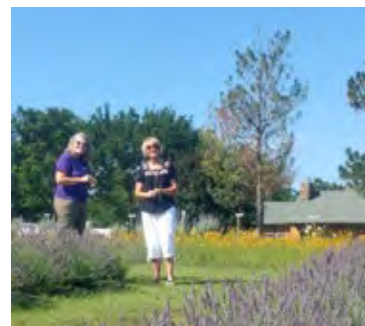
PAULS VALLEY CITY LAKE (405) 207-6630 LAKE R.C. LONGMIRE (405) 207-6630/(405) 238-5531



Constructed in 1954 primarily as a water supply lake, City Lake is located three miles northeast of Pauls Valley. It offers 750 acres of prime fishing water where various species of catfish, crappie, black bass and saugeye can be caught. Camping facilities range from full hook ups to primitive camping. [New paragraph here...] Longmire Lake is located 11 miles east on State Highway 19 and then 3 miles south on N3340 Road. Although constructed primarily for water supply, the recreational opportunities of this lake include fishing, boating, camping, hiking, birdwatching, hunting and swimming. The Oklahoma Wildlife Department designated Longmire as a trophy bass lake. It has also become a favorite wintering habitat for bald eagles.

LAKEVIEW LAVENDER FARM (405) 238-0042 [facebook.com/lakeviewlavenderfarm](https://www.facebook.com/lakeviewlavenderfarm)

Take a walk through the 800 plants (in season) on this 1-acre farm and get a whiff of the floral scent that is captured in the site's gift shop. There, you'll find homemade soap, lotion, candles, lip balm, cakes, cookies and dried arrangements. It's best to call before you go to the farm at 21536 NCR 3200.



WILD HORSE & BURRO CENTER

Catch a glimpse of the way wild horses used to roam the open landscapes of America by visiting the 400-acres Wild Horse and Burro Adoption Center, located on the west side of I-35 at Exit 74 (Kimberlin Road). See the drive-through interpretative exhibits. Call (800) 237-2642.



discover

unique festivals & culture



4TH OF JULY SPECTACULAR
LARGEST FIREWORKS DISPLAY IN THE REGION

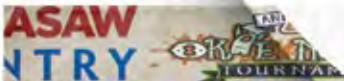
WORLD CHAMPIONSHIP WATERMELON SEED SPITTIN' CONTEST (JULY 4TH)
A TRADITION FOR MORE THAN 50 YEARS AND FEATURED IN THE GUINNESS BOOK OF WORLD RECORDS

OKIE NOODLING FESTIVAL (JUNE)
WORLD'S LARGEST HAND-FISHING TOURNAMENT

PAULS VALLEY OPRY
EVERY 1ST SATURDAY

BRICKFEST & PVPD CAR SHOW (SEPT)
VARIETY OF CAR CLASSICS, FOOD AND SHOPPING VENDORS PLUS INFLATABLES, A MARCHING BAND PARADE AND VINTAGE IN THE VALLEY BICYCLE STUNT SHOW

PAULS VALLEY 5TH FRIDAY ART WALK EXPERIENCE
FUN FOR THE ENTIRE FAMILY WITH A WIDE SELECTION OF ARTISTIC STYLES, LIVE ENTERTAINMENT, LIVE DEMONSTRATIONS, FOOD AND GOOD COMPANY.



Please visit individual Facebook accounts for event updates



COMMUNITY CONTACTS

EMERGENCY

CITY	POLICE	FIRE	AMBULANCE
Pauls Valley, Elmore City, Lindsay, Maysville, Paoli	911	911	911
Stratford (9 a.m. - 5 p.m.)	(405) 238-9900	(405) 238-9900	(405) 238-9900
Wynnewood (9 a.m. - 5 p.m.)	(405) 665-2121	(405) 665-2121	(405) 238-9900
Stratford, Wynnewood (After 5)	911	911	911

NON-EMERGENCY

CITY	POLICE	FIRE	AMBULANCE
Garvin County	911	(405) 238-9900	(405) 238-9900
Elmore City	(580) 788-2340	(580) 788-2340	(580) 788-2340
Lindsay	(405) 756-4481	(405) 756-3111	(405) 756-3111
Maysville	(405) 867-4447	(405) 867-4447	(405) 867-4447
Paoli	(405) 484-7599	(405) 484-7844	(405) 238-5501
Pauls Valley	(405) 238-5531	(405) 238-5171	(405) 238-5501
Stratford	(580) 759-2371	(580) 759-2371	(580) 759-2371
Wynnewood	(405) 665-4360	(405) 665-4772	(405) 238-5501

HOTLINES

Child or Adult Abuse Hotline	(800) 522-3511	Poison Control Center	(800) 222-1222
Missing & Exploited Children	(800) 843-5678	Suicide Prevention Hotline	(800) 784-2433
National Hopeline Network	(800) 442-4673	Teen Hotline	(800) 522-8336
OK Mental Health & Substance Abuse	(800) 522-9054	Youth Crisis & Runaway Hotline	(800) 448-4663
Parenting Help Line	(888)603-9100		

UTILITIES

Electric - Oklahoma Gas & Electric	(800) 272-9741	Rural Electric Cooperative	(405) 756-3104
Gas - Oklahoma Natural Gas	(800) 664-5463	Gas - Centerpoint Energy	(866) 275-5265
Pauls Valley Water Department	(405) 238-1300	Rural Water District 1	(405) 238-7762
Rural Water District 4	(405) 238-7173		

TRASH SERVICES

Garvin County Community Living Center (Recycling)	(405) 207-1155	Rural Sanitation Services	(580) 788-2747
GFL Environmental	(405) 495-0800	Solid Waste Removal Co.	(405) 238-2059
Pauls Valley Trash Service	(405) 238-3300		

Hello

From the City Manager



What an exciting time to live, work, play and visit Pauls Valley, Oklahoma!

Pauls Valley is a growing community of just under 6,000 residents with a focus on business opportunities, entrepreneurship, festivals, the arts, education, outdoor recreation and overall town revitalization. With a new-found focus that acknowledges our rich heritage of the past, while embracing innovation, sustainability, and much welcomed change. By increasing the quality-of-life amenities, we hope to draw young professionals and new families to our city.

Pauls Valley, located just south of Norman, lends itself to 3 major highways allowing both visitors and residents the opportunity to experience the joys of our small city, while having easy access to the larger city. Pauls Valley is home to 9 beautiful parks and 2 lakes. Our parks include a water park, a nature park, and indoor aquatics center.

Our largest park, Wacker Park, serves as a playground for the young and a recreation site for adults, complete with playground equipment, band shell, softball and baseball fields, the Rotary rose garden, tennis courts, pavilion, Senior Citizen Center, rodeo grounds, Garvin County fair facility, football field, basketball gym, recreation center and outdoor water park. Wacker Park is host to the largest noodling festival in the world, Okie Noodling. This event draws crowds of more than 10,000 visitors. Pauls Valley Municipal Golf Course is a 9-hole course with 2 picturesque ponds. This course houses a practice facility that is utilized by 6 surrounding schools.

Stop by the Pauls Valley Municipal Airport to relax in the newly renovated lounge area! You will find a large spacious office area, memorabilia exhibiting Pauls Valley's history, and a complete kitchen space. At the Pauls Valley Municipal Airport, the fridge is always stocked with fresh drinks and a good pot of coffee.

One of the most essential services provided at the Airport is maintenance and repair services. This is made possible by local repair and service provider Aero Valley LLC. Along with providing maintenance services, Aero Valley also provides full-service inspections and avionics services. Offered here are both self-serve fuel pump and a new high-capacity fuel truck, which optimizes the refueling of larger jet propulsion aircrafts. As part of the Pauls Valley Municipal Airport's mission to provide our customers with the best service, we also provide some of the most affordable price in our neighboring area.

The goal of the City of Pauls Valley is to provide both citizens and visitors an excellent experience with quality jobs to sustain employment, all within a safe and pleasant environment to establish their home. Our employees continue to work hard to make life comfortable for the citizens of Pauls Valley.

Whether you are a life-long resident, a newcomer or a visitor, we are glad you are here!



Lee Litterell
City Manager

TELECOMMUNICATIONS

360 Broadband	(855) 328-5099	DIRECTV	(855) 881-1994
AT&T - Business Customers	(800) 499-7928	Dish Network	(855) 491-2017
AT&T - Residential Customers	(800) ATT-2020	Suddenlink	(844) 874-7558
AtLink	(405) 753-7151		

OTHER IMPORTANT NUMBERS

211 Oklahoma (Food, Rent, and Community Services)		211	
CASA Outreach McClain/Garvin County	(405) 360-5295	Pauls Valley Animal Shelter	(405) 238-1303
Department of Human Services	(405) 238-6461	Pauls Valley Post Office	(405) 238-3268
Drivers License Examiner		Samaritans Pantry	(405) 207-9077
Ada	(580) 332-8265	Social Security Administration	(866) 331-2207
Ardmore	(580) 226-2207	Tag Office, 113 E. Paul Avenue	(405) 238-5534
Norman	(405) 364-9595	Unemployment (OESC)	(405) 525-1500
McClain/Garvin Youth & Family Center	(405) 527-2424	Veterans Affairs Regional Office	(918) 397-2560
Mental Health Services	(405) 238-7311	Veterans Crisis Line	(800) 273-8255
Office of Juvenile Affairs	(405) 238-5547	Veterans of Foreign Wars	(405) 207-9772

CITY OF PAULS VALLEY

<p>100 W. Paul Avenue P.O. Box 778 Pauls Valley, OK 73075</p> <p>Jocelyn Rushing, Mayor Lee Litterell, City Manager</p> <p>(405) 238-3308 www.PaulsValley.com</p>		Airport	(405) 238-7338
		Animal Control	(405) 238-1303
		Bosa Aquatic Center	(405) 238-1238
		Cemetery	(405) 238-6728
		Code Enforcement	(405) 238-3308, Ext. 161
		Donald W. Reynolds Recreation Center	(405) 238-1307
		Golf Course	(405) 238-7462
		Longmire Lake	Lake Ranger (405) 207-6630
			Non-Emergency PD (405) 238-5531
			Nora Sparks Warren Library (405) 238-5188
City Hall	Ext. 151	Parks & Recreation	(405) 238-1307
City Clerk	Ext. 153	Pauls Valley City Lake	(405) 207-6630
Police Chief Derrick Jolley		Senior Nutrition Center	(405) 238-5892
Fire Chief Mark Norman		Trash Service	(405) 238-3300
		Water Department	(405) 238-1300 Ext. 148

COMMUNITY CONTACTS

GOVERNMENT

GARVIN COUNTY

Associate District Judge Laura McClain	(405) 238-2542
Commissioner District 1 Randy Chandler	(405) 867-4409
Commissioner District 2 Gary Ayres	(580) 788-2774
Commissioner District 3 Mike Gollihare	(580) 759-2362
County Assessor Tammy Murrah	(405) 238-2409
County Clerk Lori Fulks	(405) 238-2772
County Commissioners (Main Office)	(405) 238-2685
County Court Clerk Laura Lee	(405) 238-5596
County Election Board Gayla Deen	(405) 238-3303
County OSU Extension Center	(405) 238-6681
County Sheriff Jim Mullett	(405) 238-7591
County Treasurer Sandy Goggans	(405) 238-7301
County 911	(405) 238-9900
Court Reporter	(405) 238-1143
Department of Human Services	(405) 238-6461
District Attorney Greg Mashburn	(405) 573-1364
District Judge Leah Edwards	(405) 238-3486
Emergency Management	(405) 238-1148
Health Department	(405) 238-7346
Rural Water	(405) 238-7762
Special District Judge Trisha Misak	(405) 238-6561

CHICKASAW NATION

GOVERNMENT & ADMINISTRATION

Bureau of Indian Affairs Chickasaw Agency	(580) 436-0784
Carl Albert Indian Health Facility	(580) 436-3980
Chickasaw Lighthouse Police	(580) 436-7213
Chickasaw Nation Headquarters	(580) 436-2603
Chickasaw Nation Senior Center	(405) 207-9034
Chickasaw Tribal Legislature	(580) 436-1460
District Court	(580) 235-0279
Drug Court Support Services	(580) 235-7652
Supreme Court	(580) 235-0281

GOVERNMENT FEDERAL & STATE ELECTED OFFICIALS

GOVERNOR J. KEVIN STITT

Oklahoma.gov/Governor.html

(405) 521-2342

2300 N. Lincoln Blvd., Suite 212
Oklahoma City, OK 73105

U.S. CONGRESSMAN TOM COLE (R)

Field Representative: Amber Savage
E-mail: amber.savage@mail.house.gov

(202) 225-6165

Local Number: (405) 329-6500
2424 Spring Drive, Ste. 201
Norman, OK 73069
2207 Rayburn House Office Building
Washington, DC 20515

U.S. SENATOR MARKWAYNE MULLIN (R)

Field Representative: Thomas Cohrs
Email: thomas_cohrs@mullin.senate.gov

(202) 224-4721

Local Number: (405) 208-8841
3817 NW Expressway
Oklahoma City, OK 73112
330 Hart Senate Office Building
Washington, D.C., 20510

U.S. SENATOR JAMES LANKFORD (R)

Field Representative: Steve Carson
E-mail: steve_carson@lankford.senate.gov

(202) 225-2132

Local Number: (405) 231-4941
1015 N. Broadway, Suite 310
Oklahoma City, OK 73102
316 Hart Senate Building
Washington, DC 20510

STATE SENATOR GREG MCCORTNEY (R)

District 13

E-mail: greg.mccortney@oksenate.gov

(405) 521-5541

2300 N. Lincoln Blvd, Rm. 421
Oklahoma City, OK 73105

STATE SENATOR JESSICA GARVIN (R)

District 43

E-mail: jessica.garvin@oksenate.gov

(405) 521-5522

2300 N. Lincoln Blvd, Rm. 237
Oklahoma City, OK 73105

STATE REPRESENTATIVE CYNTHIA ROE (R)

District 42

E-mail: cynthia.roe@okhouse.gov

(405) 557-7365

2300 N. Lincoln Blvd, Rm. 242
Oklahoma City, OK 73105

STATE REPRESENTATIVE TAMMY TOWNLEY (R)

District 48

E-mail: tammy.townley@okhouse.gov

(405) 557-7326

2300 N. Lincoln Blvd, Rm. 303
Oklahoma City, OK 73105

CHURCHES & PLACES OF WORSHIP

Beaty Baptist	(405) 238-6937	32090 Airline Rd.
Bethlehem Baptist	(405) 238-5818	311 N. Dunbar
Christian Life	(405) 238-5625	820 S. Walnut
Church of Christ	(405) 238-3470	1509 W. Grant
Church of Jesus Christ of Latter Day Saints	(405) 238-9133	1100 S. Indian Meridian Rd.
Church of The Nazarene	(405) 238-3141	224 N. Pecan
Compassion Church	(405) 207-9122	113 W. McClure
Crossroads Church	(405) 238-3664	32145 ECR 1570
The Ekklesia Church	(405) 444-0039	309 E. Charles Ave.
First Assembly of God	(405) 238-3402	320 N. Chickasaw
First Baptist	(405) 238-3431	213 N. Ash
First Christian Church (Disciples of Christ)	(405) 238-6332	300 N. Ash
First Church of God	(405) 238-6169	414 N. Chickasaw
First Presbyterian	(405) 238-6667	320 N. Walnut
First United Methodist	(405) 238-3354	407 N. Willow
Grace Baptist	(405) 238-6177	37188 Hwy. 19
Iglesia De Cristo Berea	(405) 207-8098	318 S. Montie
Kingdom Hall of Jehovah's Witnesses	(405) 238-6771	307 E. Leslie
Landmark Tabernacle	(405) 238-2468	2200 W. Royal Oaks Road
Liberty Baptist	(405) 238-0347	21953 N. County Rd. 3250
Light of the World	(580) 465-7626	32155 Hwy 19
Ministerial Alliance	(405) 238-3354	
New Life United Pentecostal Church	(405) 331-4481	35927 Airport Road
New Testament Baptist	(405) 238-5606	1717 S. Chickasaw
Pauls Valley Seventh-Day Adventist Church	(405) 928-0883	2930 W. Grant Ave.
St. Catherine's Catholic	(405) 238-3741	205 W. Bert Ave.
St. Timothy's Episcopal	(405) 238-2133	1820 S. Walnut
The House	(405) 805-6159	33440 Airline Road
Trinity Baptist	(405) 238-3531	108 Lofton Lane
Victory Lighthouse	(405) 238-9454	1000 East Ave. on Hwy 19 East
Whitebead United Methodist	(405) 207-8564	16524 N. County Rd. 3200

COMMUNITY ORGANIZATIONS

Arbuckle Area Council of American Boy Scouts	(580) 223-0831
Boy Scout Troop #73	(405) 207-8841
Cub Scout Pack #73	(405) 238-0153
Chickasaw Senior Center	(405) 207-9034
Delta Community Action Foundation	(405) 238-3838
Delta Public Transit	(405) 238-9444
Frontline Family Solutions	(405) 527-2424
Garvin County 4-H	(405) 238-6681
Garvin County Community Living Center	(405) 238-3773
Girl Scouts of Pauls Valley	(580) 465-7675
Hope for Tomorrow for Garvin County	(405) 830-1799
Lions Club of Pauls Valley	(405) 637-0337
Love PV	lovePVevent@gmail.com
Masonic Lodge of Pauls Valley	(405) 238-5113
Ministerial Alliance	(405) 238-3354
P.A.S.S. Coalition for a Drug Free Community	(580) 490-9197
Pauls Valley Alumni Association	(405) 238-0065
Pauls Valley Animal Welfare Society (PAWS)	(405) 238-1303
Pauls Valley Chamber of Commerce	(405) 238-6491
Pauls Valley Community Foundation	(405) 238-6444
Pauls Valley Head Start	(405) 238-3838
Pauls Valley Historical Society	(405) 238-2244
Paws Valley Dog Park	pawsvalley@gmail.com
Rotary Club of Pauls Valley	(405) 331-3508
Round Up Club of Pauls Valley	(405) 238-2776
Samaritans of Pauls Valley	(405) 207-9077
Senior Citizens Center	(405) 238-5892
South Central CASA of Oklahoma	(405) 360-5295
Southern Workforce Board	(405) 238-2988
Youth Sports League	(405) 238-1307

MEMBER LIST

MEMBER NAME	PAGES	MEMBER NAME	PAGES
360 Broadband	11, 25, 42, 49	Garvin Agee Carlton P.C.	34
Abiding Home Health	5, 41, 54	Garvin County Abstract	33
Ace Hardware & Lumber	11, 40, 46	Garvin County Choral Society & Sinfonietta	3, 16, 44
AirMedCare Network/Air Evac	33, 41	Garvin County Community Living Center	9, 11, 23, 29, 34, 47, 49
Allee, Brian D.O.	40	Garvin County Farm Bureau	42
Allstate Termite & Pest Control	45	Garvin County News Star	33, 44
Amcor Flexibles North America	5, 11, 43, Back Cover	Garvin, Jessica*	
Apple Ridge Seniors	34, 47	GFL Environmental	23, 49
AT&T	5, 25, 42, 48, 49	Girl Scouts of Western Oklahoma Troop 259	29, 36
AtLink Services, LLC	25, 42	Gowing, Mary*	
Backroad Spirits	43	Grant & Katie Johnson, CPA, PLLC	5, 32, 33, 48
Baja Services	44	Halverson Ranch	5, 33
Bar Nunn Ranch	33	Hampton Inn & Suites	41
Beadles, Gary*		Heritage Therapeutic Services	47
Best Western Plus	20, 41	Hinkle Printing & Office Supply	44, 45
Better Barns	43, 48	Holiday Inn Express & Suites	41
Blake, John*		Homeland	40
Blake, Susanne*		Hooves and Paws Animal Hospital	49
Bloomin' Crazy	5, 39, 44, 46	Hope for Tomorrow for Garvin County	29, 47
Boom-A-Rang Restaurant	46	Humphrey Realty	2, 45
Bosa Banquet Center	19, 38, 54	Hunter Super Techs	38, 41, 45
Burford Corp.	11, 43	Insurance One	42
Chapel Ridge Apartments	34	Intolubbe Associates	34
Chickasaw Country Marketing Assoc.	33	J & R Construction	37
Chickasaw Nation	28, 39	JC Business Coaching & Consulting	37
Chicken Express	46	James Supplies & Rental	38, 49, 55
City of Pauls Valley	5, 8, 9, 11, 17, 23-26, 39, 50	Jamie Means, DDS	40
Colley & Company	43	Jarman Realty	45
Comprehensive Dentistry	40	Jet Stream Casino	11, 36, Front Cover
Cornerstone Caregiving	41	Johnson's Drapery	49
Covercraft Industries, LLC.	11, 43	Jones, Dr. Kim	40
Delta Community Action Foundation	15, 29, 47	KBLP-105.1FM Radio	45
Densmore, Burns*		KICM 97.7 FM Radio	45
Domino's Restaurant	46	KIXO KIX106FM Radio	45
Donald W. Reynolds Recreation Center	18, 19, 21, 25, 34, 38, 54	Kristi Dobbins CPA	33, 48
Eastridge Country Estates	2, 45	LA Jacobson, Inc.	5, 11, 37, 43
Economy Inn Express	41	Lakeview Lavender Farm	21, 33
Edward Jones - Agee	39	Legacy Accounting, CPA PLLC	33, 48
Edward Jones - Hendrix	39	Legacy Drug	5, 45
Edwards Canvas, Inc.	11, 43	Lempges, Steve*	
Elite Motorsports LLC	43	Lighthouse Behavioral Wellness Center	40, 47
Field's Pies	11, 20, 35, 43	Lions Club of Pauls Valley	29, 36
First Presbyterian Church	9, 28, 36	Lou's Liquors	43
First United Bank	5, 11, 35	Love's Country Store #50	37
First United Methodist Church	28, 36	Love's Travel Stop	37
Frontline Family Solutions	29, 47	Masons Lodge #6 of Pauls Valley	6, 29, 36, 51
Gamble Realty	45	McCortney, Greg, Sen.*	

(Cont.)

MEMBER LIST

MEMBER NAME	PAGES	MEMBER NAME	PAGES
McElroy, Martha Jo*		Southern Market	49
Meisel, Bonnie*		Southern Workforce Board	29, 38, 47, 49
Mercy Clinic Primary Care & General Surgery	40	Starbucks Coffee Co.	37, 46
Mid-America Technology Center	5, 14, 38, 49	Stark, Kevin*	
MNS Auto & Tire	35	State Bank of Wynnewood	35
Mo-B Car Wash	36	State Farm Insurance Co.	42
Murray State College	12, 13, 38	STEELCO, Inc.	37, 47
Nabors Welding & Supplies	49	Stufflebean-Coffey Funeral Home	39
O'Neal's Jewelers	42	Sun Loan & Tax Service	43, 48
OG&E	5, 23, 48	T-Mobile	42, 49
Oklahoma AgCredit	7, 43	Taco Bell	46
Oklahoma Blood Institute Ardmore	41	Tammy D. Catering	36
Oklahoma Natural Gas	23, 48	TH Rogers Lumber Co.	40
P.A.S.S. Coalition for a Drug Free Community	29, 47	The Daisy Patch	37, 46
Paine Business Machines	44, Back Cover	The Grille Restaurant & Bar	38, 46
Pauls Valley Chiropractic	41	The House Church	28, 36
Pauls Valley Democrat	33, 44, 54	The Valley Mercantile Boutique & Gifts	46
Pauls Valley Eye Clinic	41	The Vault	16, 20, 34, 38, 54
Pauls Valley First Baptist Church	28, 36	The Willows Assisted Living Residence	34, 47
Pauls Valley Glass & Mirror Co.	39	Tio's Restaurant	46
Pauls Valley Health & Rehab	44	Town & Country Insurance	42
Pauls Valley Municipal Airport	15, 24, 25, 33, 54	TriVAN Roofing Systems	5, 37, 47
Pauls Valley Municipal Golf Course	14, 19, 24, 25, 34, 54	United Ag & Turf	11, 38
Pauls Valley National Bank	5, 11, 35, Back Cover	Valir Hospice	41
Pauls Valley Public Schools	4, 11, 13, 38, 50, 51, 54	Valley Blossom Shop	39, 46
Pauls Valley Tag Office	25, 42, 48	Valley Body Shop	35
Pauls Valley Tire & Lube	35	Valley Community Hospital	41, 54
Physical Therapy Central	5, 41, 56	Valley Dental	40
Pro Ag Services	33	Valley Gifts & Awards	35, 47
Punkins BBQ & Catfish	32, 36, 38, 46	Valley Market	44
Reavis Rexall Drugstore	5, 32, 45, 46	Valley Wash Rack	36
Redeemed and Restored Wellness	40	Virgin, Jeff*	
Richardson, Nick*		Walmart Distribution Center	4, 11, 37
Rodeway Inn	41	Walmart Pauls Valley	11, 40, 47
Rotary Club of Pauls Valley	21, 29, 36, 51, 54	Wash Bar	42
Royal Theatre	16, 48	Washita Casino	36, Front Cover
Rural Electric Co-op	23, 38, 48	Washita Valley Living Center	44
Salt Real Estate	45	White Feather (The)	47
Santa Fe Depot Museum	8, 20, 34, 38, 43, 54	Whitebead School District	13, 38
Second Wind Travel and Charters	48	Williamsburg Animal Hospital	49
Seth Wadley Auto Group	11, 35, Back Cover	Williamson's Furniture	39
Seth Wadley Chevrolet GMC Buick	5, 35	Wooster Funeral Home	39
Seth Wadley Ford	35	Yeatts Finance & Furniture	34, 39, 43
Sharpe's Department Store	46	York Janitorial Supplies & Equipment LLC	42
Shelter Insurance	42		
Sherwin-Williams Paint	44		
Simmons Bank - Wynnewood	35		
Sonic Drive-Ins	11, 46, Back Cover		
Sooner Home Furnishings	5, 34, 39, 46, 56		

* Individual Chamber members can be reached by contacting the Chamber office.

Punkins BBQ & Catfish

Country Style Cooking ...
Southern Inspired



1911 W Grant Ave, Pauls Valley OK 73075
(405) 238-2320 | PunkinsBBQ.com

PAULS VALLEY
CHAMBER OF COMMERCE

We appreciate
-your-
support

of our local businesses

**GRANT & KATIE
JOHNSON**

CERTIFIED PUBLIC ACCOUNTANTS



(405) 238-2727

Pauls Valley Sulphur/Davis
Lindsay

Jack's **REAVIS**

Health Mart

PHARMACY & HOME MEDICAL

(405) 238-7391

110 Burr Avenue • Pauls Valley, OK 73075

FREE Rx DELIVERY IN PAULS VALLEY

Valley Community Clinic - Family Care

NOW SCHEDULING APPOINTMENTS

Accepting new patients & most insurance plans

- Routine checkups
- Health risk assessments
- Immunizations
- Screening tests
- Chronic pain management + more

100 Valley Drive, Pauls Valley (South Side of
Valley Community Hospital)
(405) 866-5159 • valleycommunityhospital.com

**The Membership Directory appearing
on this and succeeding pages in the
published booklet is available in digital
and interactive format on the Pauls
Valley Chamber website at
<https://www.paulsvalleychamber.com>
(click to view).**

2024 COMMUNITY CALENDAR

ALL CALENDAR EVENTS ARE SUBJECT TO CHANGE OR CANCELLATION. PLEASE CHECK WITH THE ORGANIZATION PRIOR TO MAKING PLANS TO PARTICIPATE.

JANUARY

- 1 – NEW YEAR’S DAY
- 11 – LIFE PLANNING SERIES: PLANNING FOR THE GOLDEN YEARS
- 15 – MARTIN LUTHER KING JR. DAY
- 23 – STATE OF THE CITY LUNCHEON

FEBRUARY

- 19 – PRESIDENTS DAY

MARCH

- 10 – DAYLIGHT SAVINGS TIME BEGINS
- 18-22 - SPRING BREAK - PAULS VALLEY SCHOOLS
- 29 – FIFTH FRIDAY ART WALK
Pauls Valley Arts Council.....(972) 415-2917
- 31 - EASTER

APRIL

- 18 – CHAMBER BANQUET
Pauls Valley Chamber of Commerce (405) 238-6491

MAY

- 10 – CHAMBER GOLF TOURNAMENT (TENTATIVE)
Pauls Valley Chamber of Commerce (405) 238-6491
- 12 - MOTHER’S DAY
- 17 – GRADUATION – PAULS VALLEY HIGH SCHOOL
- 27 – MEMORIAL DAY
- 31 – FIFTH FRIDAY ART WALK
Pauls Valley Arts Council.....(972) 415-2917

JUNE

- 14 – OKIE NOODLING CONCERT AT WACKER PARK
City of Pauls Valley(405) 238-3308
- 15 – OKIE NOODLING TOURNAMENT AT WACKER PARK
City of Pauls Valley(405) 238-3308
- 18 – FATHER’S DAY

JULY

- 4 – INDEPENDENCE DAY
- TBD – FIREWORKS SHOW

AUGUST

- 30 – FIFTH FRIDAY ART WALK
Pauls Valley Arts Council.....(972) 415-2917

SEPTEMBER

- 2 – LABOR DAY
- 28 – BRICKFEST/POLICE OFFICERS CAR SHOW
City of Pauls Valley(405) 238-1307
Pauls Valley Chamber of Commerce (405) 238-6491
Pauls Valley Police Department.....(405) 238-5531
- TBD– HOMECOMING – PAULS VALLEY SCHOOLS

OCTOBER

- 31 – HALLOWEEN
- 31 - BOO ON THE BRICKS
- TBD – FALL BREAK – PAULS VALLEY SCHOOLS
- TBD – RED BRICK ROAD FILM FESTIVAL

- 3 – DAYLIGHT SAVING TIME ENDS
- 28 – THANKSGIVING
- 29 – FIFTH FRIDAY ART WALK
Pauls Valley Arts Council.....(972) 415-2917
- 30 – SMALL BUSINESS SATURDAY

DECEMBER

- 2 – CHRISTMAS PARADE OF LIGHTS AND CHILI SUPPER
City of Pauls Valley(405) 238-3308
Pauls Valley Fire Department.....(405) 238-5171
- 25– CHRISTMAS

2024 COMMUNITY CALENDAR

ALL CALENDAR EVENTS ARE SUBJECT TO CHANGE OR CANCELLATION. PLEASE CHECK WITH THE ORGANIZATION PRIOR TO MAKING PLANS TO PARTICIPATE.

RECURRING MEETINGS & EVENTS

MONDAYS FROM APRIL TO SEPTEMBER

JACKPOT BARREL RACING AT PAULS VALLEY

RODEO ARENA

Pauls Valley Round-Up Club

FRIDAYS - NOON

ROTARY CLUB MEETING

Christian Life Church.....820 S. Walnut

Jason Agee.....(405) 331-3508

1ST & 3RD TUESDAYS - 7 PM

MASONS MEETING

Masonic Lodge.....100 Mason Ave.

(405) 238-5113

3RD TUESDAY

(MONTHLY EXCEPT JULY AND DECEMBER)

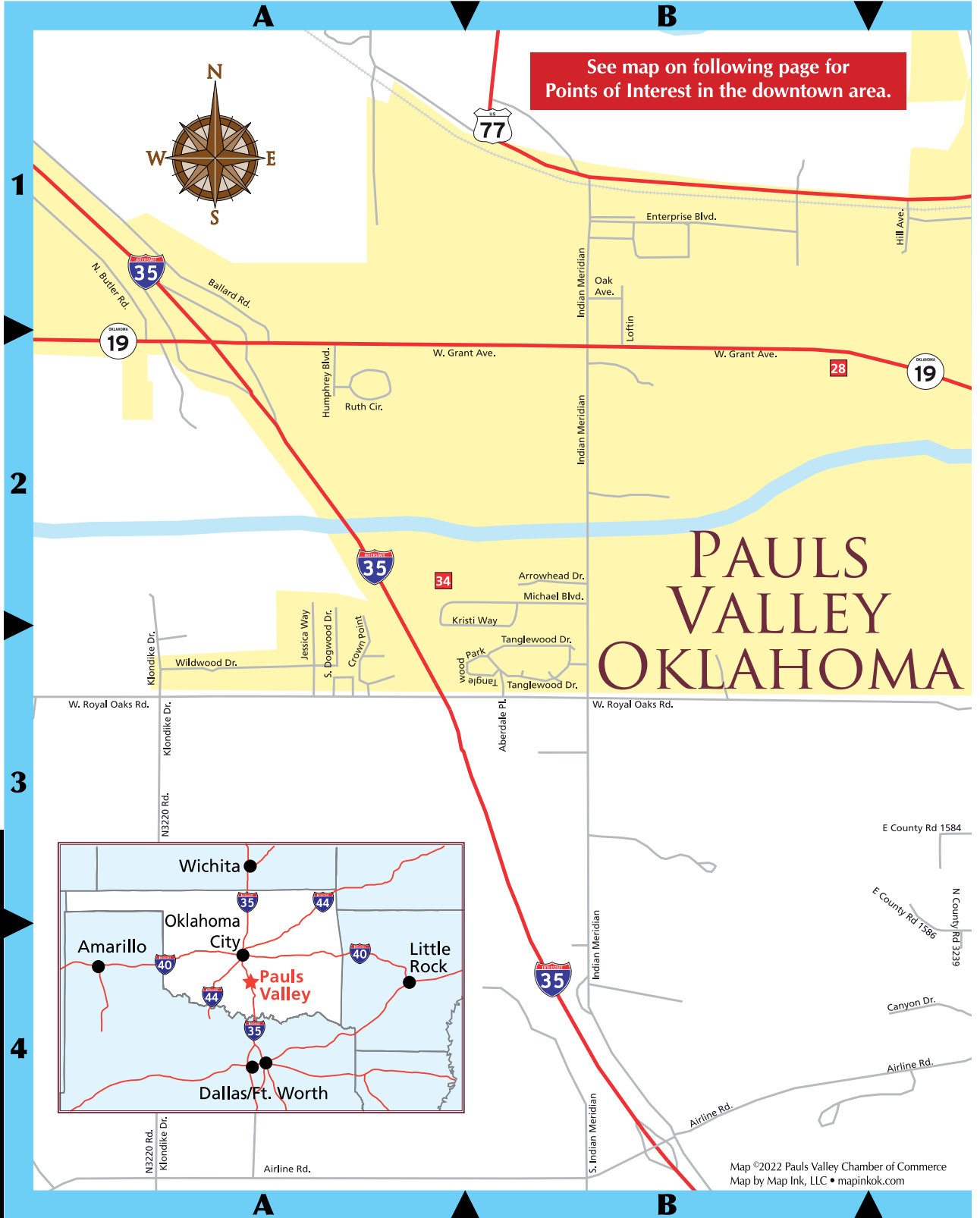
CHAMBER BOARD MEETING

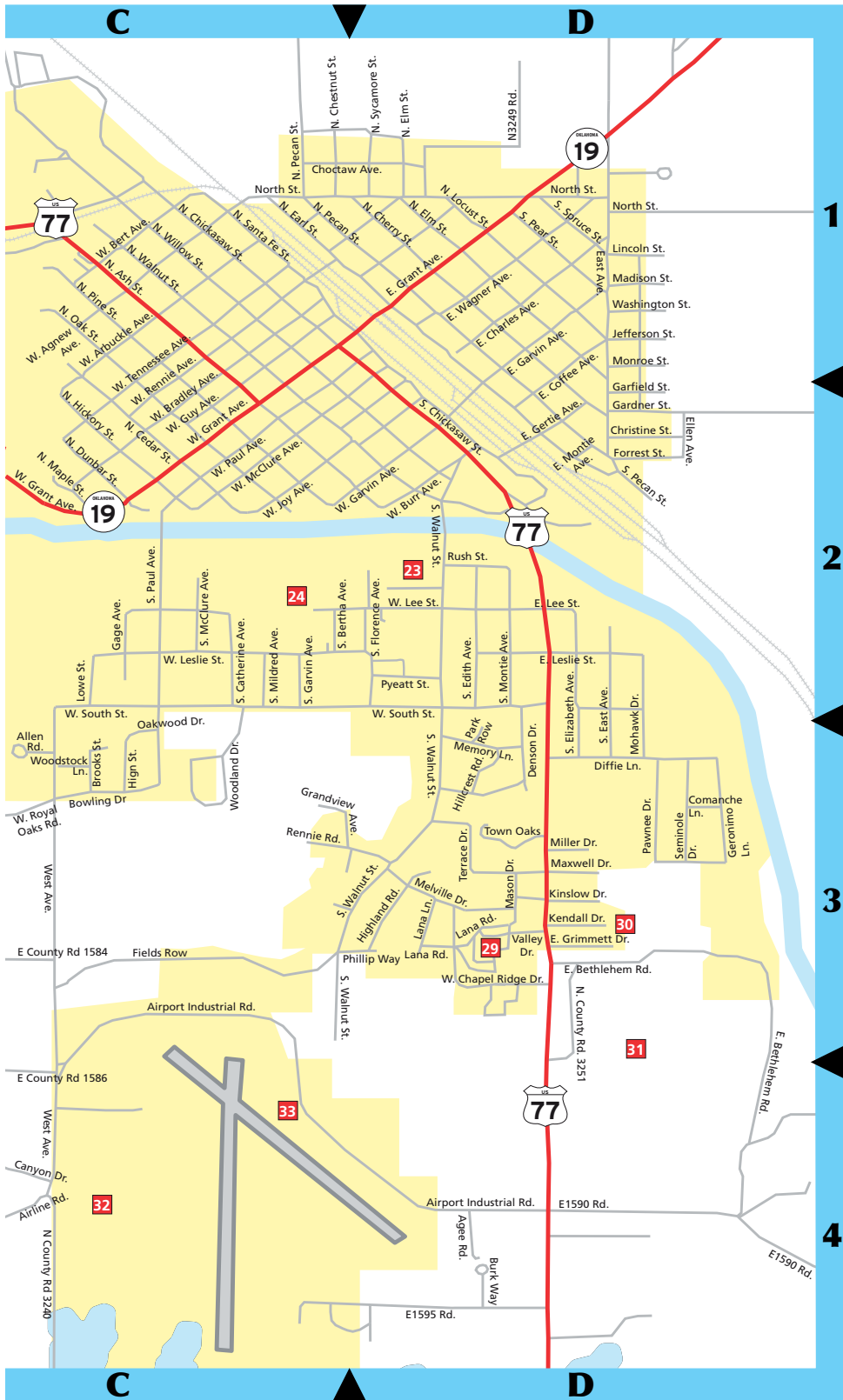
NOON

Pauls Valley Chamber of Commerce (405) 238-6491

JANUARY 2024							FEBRUARY 2024							
S	M	T	W	T	F	S	S	M	T	W	T	F	S	
	1	2	3	4	5	6						1	2	3
7	8	9	10	11	12	13	4	5	6	7	8	9	10	
14	15	16	17	18	19	20	11	12	13	14	15	16	17	
21	22	23	24	25	26	27	18	19	20	21	22	23	24	
28	29	30	31				25	26	27	28	29			
MARCH 2024							APRIL 2024							
S	M	T	W	T	F	S	S	M	T	W	T	F	S	
					1	2		1	2	3	4	5	6	
3	4	5	6	7	8	9	7	8	9	10	11	12	13	
10	11	12	13	14	15	16	14	15	16	17	18	19	20	
17	18	19	20	21	22	23	21	22	23	24	25	26	27	
24/31	25	26	27	28	29	30	28	29	30					
MAY 2024							JUNE 2024							
S	M	T	W	T	F	S	S	M	T	W	T	F	S	
			1	2	3	4							1	
5	6	7	8	9	10	11	2	3	4	5	6	7	8	
12	13	14	15	16	17	18	9	10	11	12	13	14	15	
19	20	21	22	23	24	25	16	17	18	19	20	21	22	
26	27	28	29	30	31		23/30	24	25	26	27	28	29	
JULY 2024							AUGUST 2024							
S	M	T	W	T	F	S	S	M	T	W	T	F	S	
	1	2	3	4	5	6						1	2	3
7	8	9	10	11	12	13	4	5	6	7	8	9	10	
14	15	16	17	18	19	20	11	12	13	14	15	16	17	
21	22	23	24	25	26	27	18	19	20	21	22	23	24	
28	29	30	31				25	26	27	28	29	30	31	
SEPTEMBER 2024							OCTOBER 2024							
S	M	T	W	T	F	S	S	M	T	W	T	F	S	
1	2	3	4	5	6	7			1	2	3	4	5	
8	9	10	11	12	13	14	6	7	8	9	10	11	12	
15	16	17	18	19	20	21	13	14	15	16	17	18	19	
22	23	24	25	26	27	28	20	21	22	23	24	25	26	
29	30						27	28	29	30	31			
NOVEMBER 2024							DECEMBER 2024							
S	M	T	W	T	F	S	S	M	T	W	T	F	S	
					1	2	1	2	3	4	5	6	7	
3	4	5	6	7	8	9	8	9	10	11	12	13	14	
10	11	12	13	14	15	16	15	16	17	18	19	20	21	
17	18	19	20	21	22	23	22	23	24	25	26	27	28	
24	25	26	27	28	29	30	29	30	31					

CALENDAR OF EVENTS





1

2

3

4

PAULS VALLEY MAP

STREET INDEX

A-B

Aberdale Pl (B3)
 Agee Rd (D4)
 W. Agnew Ave (C1)
 Airline Rd (A4,BC-4)
 Airport Industrial Rd (C3,D4)
 Allen Rd (C3)
 W. Arbuckle Ave (C1)
 Arrowhead Dr (B2)
 N. Ash St (C1-2)
 Ballard Rd (A1)
 Bert Ave (C1)
 S. Bertha Ave (C2)
 E. Bethlehem Rd (D3,4)
 Bowling Dr (C3)
 W. Bradley Ave (C1,2)
 Brooks St (C3)
 Burk Way (D4)
 W. Burr Ave (D2)
 N. Butler Rd (A1)

C-D

Canyon Dr (C4)
 S. Catherine Ave (C2)
 N. Cedar St (C2)
 W. Chapel Ridge Dr (D3)
 E. Charles Ave (D1)
 N. Cherry St (D1)
 N. Chestnut St (C1)
 N. Chickasaw St (C1)
 S. Chickasaw St (D2)
 Christine St (D2)
 Choctaw Ave (C,D1)
 E. Coffee Ave (D1,2)
 Comanche Ln (D3)
 E. County Rd 1584 (C3)
 E. County Rd 1586 (C3)
 E. County Rd 1590 (D4)
 E. County Rd 1595 (D4)

N. County Rd 3220 (A3,4)
 N. County Rd 3239 (C3)
 N. County Rd 3240 (C4)
 N. County Rd 3249 (D1)
 N. County Rd 3251 (D3,4)
 Crown Point (A3)
 Denson Dr (D3)
 Diffie Ln (D3)
 S. Dogwood Dr (A3)
 N. Dunbar St (C2)

E-F

N. & S. Earl St (C1,D2)
 S. East Ave (D1-3)
 S. Edith Ave (D2)
 S. Elizabeth Ave (D2,3)
 Ellen Ave (D2)
 N. & S. Elm St (D1)
 Enterprise Blvd (B1)
 Fields Row (C3)
 S. Florence Ave (D2)
 Forrest St (D2)

G-H

Gage Ave (C2)
 Gardner St (D2)
 Garfield St (D2)
 E. Garvin Ave (D1)
 W. & S. Garvin Ave (D2)
 Geronimo Ln (D3)
 E. Gertie Ave (D2)
 Grandview Ave (D3)
 Grant Ave (A-D1-2)
 E. Grimmett Dr (D3)
 W. Guy Ave (C2)
 N. Hickory St (C2)
 High St (C3)
 Highland Rd (D3)
 Hill Ave (C1)
 Hillcrest Rd (D3)

Humphrey Blvd (A2)

I-J

Indian Meridian (B1-4)
 Jefferson St (D1)
 Jessica Way (A3)
 W. Joy Ave (C2)

K-L

Kendall Dr (D3)
 Kinslow Dr (D3)
 Klondike Dr (A3,4)
 Lana Ln (D3)
 Lana Rd (D3)
 E. & W. Lee St (D2)
 W. Leslie St (C,D2)
 Lincoln St (D1)
 N. & S. Locust St (D1)
 Loftin (B1)
 Lowe St (C2)

M-N

Madison St (D1)
 Mason Dr (D2)
 Maxwell Dr (D3)
 W. McClure Ave (C2)
 S. McClure Ave (C2)
 Melville Dr (D3)
 Memory Ln (D3)
 S. Mildred Ave (C2)
 Miller Dr. (D3)
 Mohawk Dr (D2,3)
 Monroe St (D1)
 E. Montie Ave (D2)
 S. Montie Ave (D2)
 North St (C,D1)
 O-P

Oak Ave (B1)
 N. Oak St (C1-2)
 Oakwood Dr (C3)

Park Row (D3)
 W. & E. Paul Ave (C2)
 S. Paul Ave (C2)
 Pawnee Dr (D3)
 S. Pear St (D1)
 N. Pecan St (C1)
 S. Pecan St (D2)
 Phillip Way (D3)
 N. Pine St (C1-2)
 Pycatt St (D2)

R-S

W. Rennie Ave (C,D1)
 Rennie Rd (C3)
 W. Royal Oaks Rd (A-C3)
 Rush St (D2)
 Ruth Cir (A2)
 N. Santa Fe St (C1,D2)
 Seminole Dr (D3)
 W. South St (C,D3)
 S. Spruce St (D1)
 N. Sycamore St (D1)

T-W

Tanglewood Dr (B3)
 Tanglewood Park (B3)
 W. Tennessee Ave (C1)
 Terrace Dr (D3)
 Town Oaks (D3)
 Valley Dr (D3)
 E. Wagner Ave (D1)
 N. Walnut St (C1)
 S. Walnut St (D2,3)
 Washington St (D1)
 West Ave (C3,4)
 Wildwood Dr (A3)
 N. & S. Willow St (C1,D2)
 Woodland Dr (C3)
 Woodstock Ln (C3)



POINTS OF INTEREST

- 1 Pauls Valley Chamber of Commerce
- 2 City Hall
- 3 Santa Fe Depot Museum and Park
- 4 The Vault Art Space & Gathering Place
- 5 Toy & Action Figure Museum
- 6 Garvin County Courthouse
- 7 Pauls Valley Junior High School
- 8 Nora Sparks Warren Library
- 9 Pauls Valley Schools Administration Office
- 10 U.S. Post Office
- 11 Pauls Valley Democrat Newspaper
- 12 Pauls Valley Arts & Cultural Center
- 13 Wacker Park
- 14 Donald W. Reynolds Recreation Center
- 15 Pauls Valley Water Park
- 16 Garvin County Fairgrounds
- 17 Pauls Valley Football Field
- 18 Paws Valley Dog Park
- 19 Rotary Club Rose Garden
- 20 Samaritans Food Pantry
- 21 Pauls Valley Intermediate School
- 22 Pauls Valley Recycling Center
- 23 Old Pauls Valley Cemetery
(see large map)
- 24 Washita Valley Nature Park
(see large map)
- 25 Pauls Valley High School
- 26 Bosa Banquet Center
- 27 Bosa Aquatic Center
- 28 Pauls Valley Elementary School

(See large map for the following)

- 29 Valley Community Hospital
- 30 Bethlehem Cemetery
- 31 Mt. Olivet Cemetery
- 32 Pauls Valley Municipal Golf Course
- 33 Pauls Valley Municipal Airport
- 34 Baseball & Soccer Fields



See map on previous pages for Points of Interest outside the downtown area.

JAMES SUPPLIES
Welding Supplies • Industrial Gloves • Medical Gloves
 410 S. Chickasaw St., Pauls Valley, OK 73075
 405-238-6421
 Ada - Ardmore - Atoka - Duncan
 Lawton - Lindsay - McAlester - Shawnee
 Find us on social media or at www.jamesupplies.com

Washita River FILM SOCIETY
 Proudly Presents
 RED BRICK ROAD FILM FESTIVAL
 PAULS VALLEY, OK

October 10-13, 2024
 Follow us on Social Media to Keep Up with Upcoming Events

 @WashitaRiverFilmSociety
 @RedBrickRoadFF

PAULS VALLEY MAP

INDEX OF ADVERTISERS

ABIDING HOME HEALTH	54
AMCOR FLEXIBLES NORTH	COVER
BEST WESTERN PLUS	20
CITY OF PAULS VALLEY	14, 18, 20, 22, 24
EASTRIDGE COUNTRY ESTATES	2
FIELD'S PIES	20
GRANT & KATIE JOHNSON CPA	32
JAMES SUPPLIES	55
JET STREAM/WASHITA CASINOS	COVER
MID-AMERICA TECHNOLOGY CENTER	14
MURRAY STATE COLLEGE	12
PAINE BUSINESS MACHINES	COVER
PAULS VALLEY NATIONAL BANK	COVER
PAULS VALLEY PUBLIC SCHOOLS	4
PHYSICAL THERAPY CENTRAL	56
PUNKINS BBQ & CATFISH	32
REAVIS DRUG	32
SETH WADLEY AUTO GROUP	COVER
SONIC DRIVE	COVER
SOONER HOME FURNISHINGS	56
VALLEY COMMUNITY HOSPITAL	32
WALMART DISTRIBUTION CENTER	4
WASHITA RIVER FILM SOCIETY	55

To be included in this Guide next year, please contact the Pauls Valley Chamber of Commerce.

INDEX OF ADVERTISERS

Furniture • Mattresses
Appliances • Electronics
Sales & Service



Mark, Mickey, and Amy
Family Owned/Doing Business Since 1953

Thompson's
SOONER HOME FURNISHINGS
"Pauls Valley's Radio Shack Dealer"
101 E. Paul • 238-3334 • 9-5 Mon-Sat
www.soonerhome.net



Back To Work.
Back To Play.
Back To Life.

www.ptcentral.org

34637 Airline Rd
405-238-7000



Kevin Readnour

- HOME
- BUSINESS
- LIFE
- CYCLES
- BOND
- HEALTH
- FARM
- OIL FIELD
- RV's



205 S. Chickasaw • Pauls Valley, Oklahoma

(405) 238-7331



(405) 207-2200

**200 N Indian Meridian Road
Pauls Valley, OK
73075-9102**



BUSINESS MACHINES
205 WEST PAUL
PAULS VALLEY, OK 73075

800-657-7345 (405) 238-7568

JEFF PAINE



Two locations in Pauls Valley to serve you:

**Interstate 35
2505 W. Grant
405-207-9620**

2-4pm Daily - Happy Hour

Order Ahead with the Sonic app

**Downtown at
201 N. Pine
405-238-3301**

Oklahoma's 
TRUCK KING



**OIL CHANGES
FOR LIFE**

SW SETH WADLEY
— AUTO FAMILY —



**ENGINES
FOR LIFE**

SETHWADLEY.COM PAULS VALLEY • ADA • PERRY



LINCOLN



GMC



DODGE

Jeep



RAM



LOCATIONS

Pauls Valley

- Main Branch
- Downtown Drive Thru
- Meridian Branch

Elmore City

Davis

BANK SERVICES

- 5 Locations
- ATMs
- Free Checking
- Investments
- Annuities
- 24 HR Account Access
(405) 238-4400
- Time & Temp
(405) 238-7321

www.pvnb.com



Main Branch - Pauls Valley
101 W. Paul
(405) 238-9321



Meridian Branch - Pauls Valley
101 N. Indian Meridian Road



Downtown Drive Thru Branch
217 West Paul - Pauls Valley



Elmore City Branch
101 S. Main - Elmore City
(580) 788-2912



First National Bank of Davis
301 E. Main - Davis
(580) 369-2325

Your Local Bank for Over 100 Years